

**Application**  
In-grade location luminaires. These luminaires are designed to bear especially high pressure loads of up to 11,000 lbs from vehicles with pneumatic tires. The luminaires must not be used for traffic lanes where they are subject to horizontal pressure from vehicles braking, accelerating and changing direction.

**Materials**  
Clear safety glass with white ceramic coating  
Corrosion-resistant 304 grade stainless steel  
High temperature silicone gasket  
Stainless steel screw clamps  
Mechanically captive stainless steel fasteners

**NRTL** listed to North American Standards, suitable for wet locations  
Protection class IP 68

**Weight:** 18.7 lbs.

**Electrical**  
Operating voltage 120-277V AC  
Minimum start temperature -30° C  
LED module wattage 13.0 W  
System wattage 15.0 W  
Controllability 0-10V, TRIAC, and ELV dimmable  
Color rendering index Ra > 80  
Luminaire lumens 99 lm  
LED service life (L70) 60000 hrs

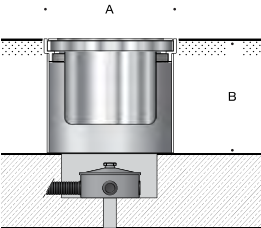
**LED color temperature**  
4000K (K4)  
3500K (K35)  
3000K (K3)  
2700K (K27)

**BEGA** can supply you with suitable LED replacement modules for up to 20 years after the purchase of LED luminaires - see website for details

**Finish**  
#4 brushed stainless steel. Custom colors are not available.

Type:  
BEGA Product:  
Project:  
Modified:

Available options  
NSL      Non-skid lens



In-grade luminaire · Location luminaire			
	LED	A	B
B77072	13.0 W	10	5 1/8

