

Application

In-grade luminaire to illuminate ground surfaces. Equipped with four 60° light apertures in all directions. These luminaires affix to a recessed BEGA junction box, supplied with luminaire, eliminating the need for deep recessed housings.

Materials

- Borosilicate glass
- Marine grade, copper free (≤0.3% copper content) A360.0 aluminum alloy
- High temperature silicone gasket
- Pure anodized aluminum reflector

NRTL listed to North American Standards, suitable for wet locations
Protection class IP 67

Weight: 6.5 lbs.

Electrical

- | | |
|---------------------------|----------------|
| Operating voltage | 120-277V AC |
| Minimum start temperature | -30° C |
| LED module wattage | 11.8 W |
| System wattage | 16.0 W |
| Controllability | 0-10V dimmable |
| Color rendering index | Ra > 80 |
| Luminaire lumens | 265lm |
| LED service life (L70) | 60000 hrs |

LED color temperature

- 4000K (K4)
- 3500K (K35)
- 3000K (K3)
- 2700K (K27)

BEGA can supply you with suitable LED replacement modules for up to 20 years after the purchase of LED luminaires - see website for details

Finish

All BEGA standard finishes are matte, textured powder coat with minimum 3 mil thickness. BEGA Unidure® finish provides superior fade protection in Black, Bronze, and Silver. BEGA standard White is a super durable polyester powder. Optionally available RAL, custom, and premium colors provided in polyester powder and/or liquid paint.

Available colors

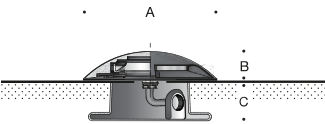
- | | |
|----------------------|--------------|
| Black (BLK) | Bronze (BRZ) |
| Silver (SLV) | White (WHT) |
| Natural Bronze (NTB) | CUS: |

Type:
BEGA Product:
Project:
Modified:

Available options

- | | |
|-----|---------------------------------|
| AMB | Amber LED |
| CUS | Custom finish |
| MGU | Marine grade undercoat |
| NTB | Natural bronze (premium finish) |
| RAL | RAL finish |

Included (available for pre-shipment)
BB7089LED Installation housings



Ground-mounted luminaire · Four 60° ports				
	LED	A	B	C
B77090	11.8W	10 1/2	12 1/4	1 1/2

