

Application

In-grade asymmetric floodlight luminaires. These luminaires are designed to bear pressure loads up to 4400 lbs. from vehicles with pneumatic tires. The luminaires must not be used for traffic lanes where they are subject to horizontal pressure from vehicles braking, accelerating and changing direction.

Materials

- Clear safety glass
- 316 grade stainless steel
- High temperature silicone gasket
- Mechanically captive stainless steel fasteners
- Fully potted waterstopper cable
- Pure anodized aluminum reflector surface

NRTL listed to North American Standards, suitable for wet locations
Protection class IP 68

Weight: 3.1 lbs.

Electrical

- | | |
|---------------------------|----------------|
| Operating voltage | 120-277VAC |
| Minimum start temperature | -30° C |
| LED module wattage | 3.0W |
| System wattage | 5.0W |
| Controllability | 0-10V dimmable |
| Color rendering index | Ra > 80 |
| Luminaire lumens | 399lm |
| LED service life (L70) | 60000hrs |

LED color temperature

- 4000K (K4)
- 3500K (K35)
- 3000K (K3)
- 2700K (K27)

BEGA can supply you with suitable LED replacement modules for up to 20 years after the purchase of LED luminaires - see website for details

Finish

#4 brushed stainless steel. Custom colors are not available.

Type:

BEGA Product:

Project:

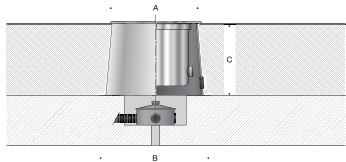
Modified:


Available options

- | | |
|--------|---------------------------------|
| DALI-2 | Enabled for DALI control system |
| NSL | Non-skid lens |

Included (available for pre-shipment)

- | | |
|--------|----------------------|
| B70693 | Installation housing |
|--------|----------------------|



In-grade luminaire · Asymmetric					
	LED		A	B	C
B77105	3.0W	24°x24°	5 ³ / ₄	10 ⁵ / ₈	6 ⁵ / ₈

