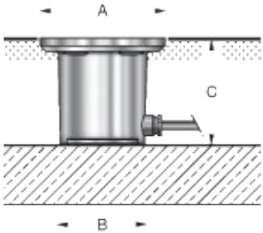


Tools Required:

- M4 Torx key
- Flathead screwdriver, small



Dimensions

- A: 4-5/8 "
- B: 3-1/8 "
- C: 3-7/8 "



Protection Class: IP68 10m

Weight: 3.1 lbs.

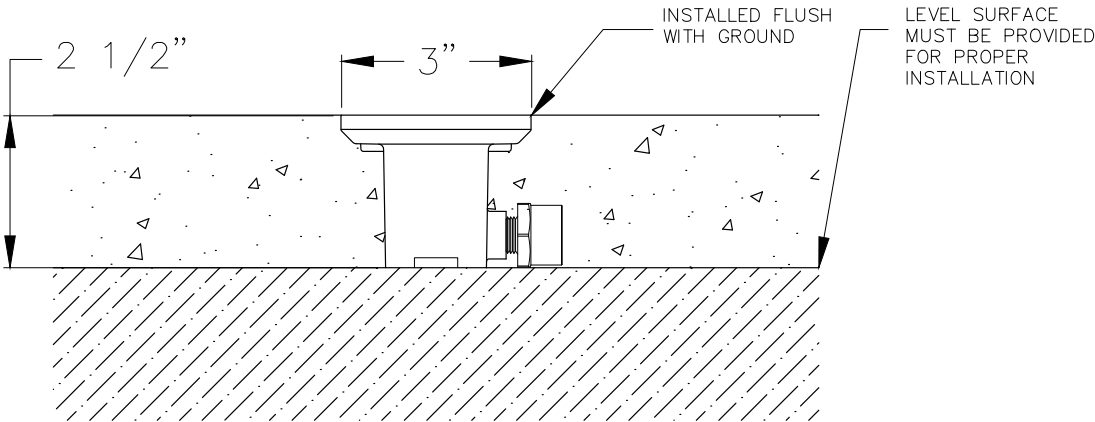
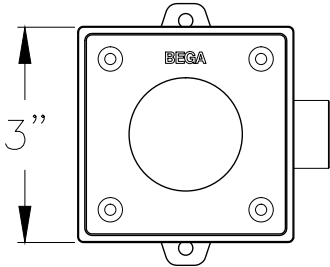
Notice to Installer for 77 118:

- 1. See page 2 for specific product safety warnings.
- 2. Fixture is pre-wired with two 10' lengths of #12 AWG wires and a waterproof cable gland entry into housing. DO NOT DISTURB THE SEAL.
- 3. Requires a 24V DC class 2 electronic power supply to operate intended LED wattage.
- 4. The fixtures are wet location rated, not submersible, they should not be installed in "low" points of concrete or earth installations where they are going to be submerged underwater for an extended period of time.
- 5. A level surface MUST be provided for proper installation.
- 6. Lamp supplied with luminaire.
- 7. **WARNING:** LEDs are high quality electrical components. Please avoid touching them directly during installation.

NOTE: BEGA Fixtures may be damaged if connected to a conduit system that contains water. Article 300-5G of the National Electric Code requires that "conduits or raceways through which moisture may contact energized live parts shall be sealed or plugged at both ends".

77 118 installation:

- 1. The luminaire housing must be firmly mounted to a proper foundation. The top edge of the luminaire housing must be flush to the prepared floor. Failure to do so may result in the fixture not sealing properly and void the warranty.
- 2. Anchor the fixture to a foundation suitable for the intended vehicular or pedestrian loads.
NOTE: MAKE SURE TO ALIGN THE FIXTURE HOUSING SO THE TRIM WILL BE ORIENTED AS PER DESIGN SPECS.
- 3. Connect the fixture to 1/2" plastic or steel conduit. Pull the provided 10' of wire through the conduit and thread conduit into provided brass adapter. DO NOT DISTURB THE FACTORY SEAL OF THE CONDUIT CONNECTOR. Use a suitable thread sealer on the 1/2" NPS conduit entry.
- 4. Finish the floor work.



Relamping/Maintenance

No relamping required.

Accessories

Please refer to the appropriate accessory installation sheet for further instruction when applicable.

- | | |
|-------------------------------|--------|
| Remote 25W LED Driver and box | 19 580 |
| Remote 50W LED Driver and box | 19 591 |

Replacement Parts

Description	Part No
Glass	140918
Gasket	83001786
LED Module (3000K)	LED-0291/830
LED Module (4000K)	LED-0291/840
Driver (24VDC)	75928

Lamp: 3W LED, 24V DC

Product Safety Warnings:

THIS PRODUCT MUST BE INSTALLED IN ACCORDANCE WITH THE APPLICABLE INSTALLATION CODE BY A PERSON FAMILIAR WITH THE CONSTRUCTION AND OPERATION OF THE PRODUCT AND THE HAZARDS INVOLVED. SUITABLE FOR WET LOCATIONS.

MIN 90°C SUPPLY CONDUCTORS.

CE PRODUIT DOIT ÊTRE INSTALLÉ SELON LE CODE D'INSTALLATION PERTINENT, PAR UNE PERSONNE QUI CONNAÎT BIEN LE PRODUIT ET SON FONCTIONNEMENT AINSI QUE LES RISQUES INHÉRENTS. CONVIENT AUX EMPLACEMENTS MOUILLÉS.

LES FILS D'ALIMENTATION 90°C MIN.
