

Application

In-grade adjustable floodlight luminaire. These luminaires are designed to bear pressure loads up to 4400 lbs. from vehicles with pneumatic tires. The luminaires must not be used for traffic lanes where they are subject to horizontal pressure from vehicles braking, accelerating and changing direction. The inclination angle is adjustable from 0-30° in 3° increments, and the optical assembly can be rotated 180° around the vertical axis.

Materials

- Clear safety glass
- 316 grade stainless steel
- High temperature silicone gasket
- Mechanically captive stainless steel fasteners
- Fully potted waterstopper cable
- Pure anodized aluminum reflector surface
- Composite concentric ring louver

NRTL listed to North American Standards, suitable for wet locations
Protection class IP 68

Weight: 12.3lbs.

Electrical

Operating voltage	120-277VAC
Minimum start temperature	-30° C
LED module wattage	19.3W
System wattage	22.0W
Controllability	0-10V dimmable
Color rendering index	Ra > 80
Luminaire lumens	945lm
LED service life (L70)	60000hrs

LED color temperature

- 4000K (K4)
- 3500K (K35)
- 3000K (K3)
- 2700K (K27)

BEGA can supply you with suitable LED replacement modules for up to 20 years after the purchase of LED luminaires - see website for details

Finish

#4 brushed stainless steel. Custom colors are not available.

Type:

BEGA Product:

Project:

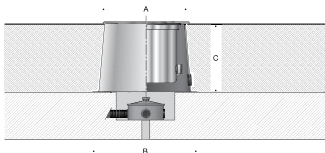
Modified:

Available options

B10016	Elliptical spread lens
B10047	Round spread lens
FSC	Fusing
NSL	Non-skid lens

Included (available for pre-shipment)

B70694	Installation housing
--------	----------------------



In-grade luminaire · Adjustable

	LED	□	A	B	C
B77147	19.3W	15°	11	13 ³ / ₄	8 ³ / ₈

