

Application

In-grade adjustable floodlight luminaire. These luminaires are designed to bear pressure loads up to 4400 lbs. from vehicles with pneumatic tires. The luminaires must not be used for traffic lanes where they are subject to horizontal pressure from vehicles braking, accelerating and changing direction. The inclination angle is adjustable from 0-30° in 3° increments, and the optical assembly can be rotated 180° around the vertical axis.

Materials

- Clear safety glass
- 316 grade stainless steel
- High temperature silicone gasket
- Mechanically captive stainless steel fasteners
- Fully potted waterstopper cable
- Pure anodized aluminum reflector surface
- Composite concentric ring louver

NRTL listed to North American Standards, suitable for wet locations
Protection class IP 68

Weight: 17.9lbs.

Electrical

- Operating voltage120-277VAC
- Minimum start temperature-30° C
- LED module wattage17.2 W
- System wattage21.0 W
- Controllability0-10V dimming down to 1%
- Color rendering indexRa > 90
- Luminaire lumens1391 lm
- LED service life (L70)60000hrs

LED color temperature

- 4000K (K4)
- 3500K (K35)
- 3000K (K3)
- 2700K (K27)

BEGA can supply you with suitable LED replacement modules for up to 20 years after the purchase of LED luminaires - see website for details

Finish

#4 brushed stainless steel. Custom colors are not available.

Type:

BEGA Product:

Project:

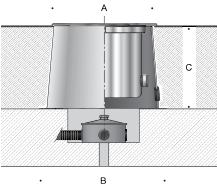
Modified:

Available options

- B10019Elliptical spread lens
- B10048Round Spread Lens
- FSCFusing
- NSLNon-skid lens

Included (available for pre-shipment)

- B688Installation housing



In-grade luminaire · Adjustable					
	LED	□	A	B	C
B77148	17.2 W	15°	13	15 1/2	10

