

Application

Pathway luminaire with shielded light for use in the private sector. These luminaires are ideally suited for gardens, entryways, and for many applications on paths and terraces. Hardscape base is intended for installation on foundations or paved surfaces. Low voltage magnetic transformer required for operation.

Materials

Clear safety glass with matte finish
Marine grade, copper free (≤ 0.3% copper content) A360.0 aluminum alloy
High temperature silicone gasket
Galvanized steel anchorage

NRTL listed to North American Standards, suitable for wet locations
Protection class IP 65

Weight: 2.4 lbs.

Electrical

Operating voltage	12VAC
Minimum start temperature	-40° C
LED module wattage	2.1 W
System wattage	3.4 W
Controllability	Non-Dimming
Color rendering index	Ra > 90
Luminaire lumens	183 lm
LED service life (L70)	60000 hrs

LED color temperature

4000K (K4)
3500K (K35)
3000K (K3)
2700K (K27)

BEGA can supply you with suitable LED replacement modules for up to 20 years after the purchase of LED luminaires - see website for details

Finish

All BEGA standard finishes are matte, textured powder coat with minimum 3 mil thickness. BEGA Unidure® finish provides superior fade protection in Black, Bronze, and Silver. BEGA standard White is a super durable polyester powder. Optionally available RAL, custom, and premium colors provided in polyester powder and/or liquid paint.

Available colors

Black (BLK)	Bronze (BRZ)
Silver (SLV)	White (WHT)
Natural Bronze (NTB)	RAL:
CUS:	

Type:

BEGA Product:

Project:

Modified:

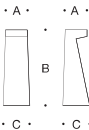
Available options

CUS	Custom finish
MGU	Marine grade undercoat
NTB	Natural bronze (premium finish)
RAL	RAL finish

Available accessories

B536 Low voltage magnetic transformer · 300W

See individual accessory spec sheet for details.



Garden bollard · Hardscape base · 12V AC				
	LED	A	B	C
B77277	2.1 W	2 ³ / ₄	9 ⁷ / ₈	3 ¹ / ₂

