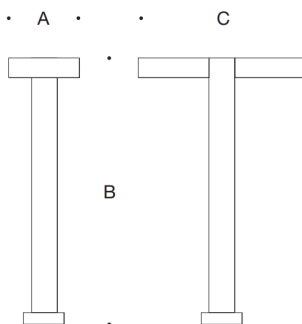


**Tools Required:**

6mm hex key  
1/2" nut driver  
Phillips medium screwdriver

**Protection Class:** IP65

**Weight:** 13.7 lbs.



**Dimensions**

**A:** 7-1/2"  
**B:** 39-1/2"  
**C:** 18-5/8"

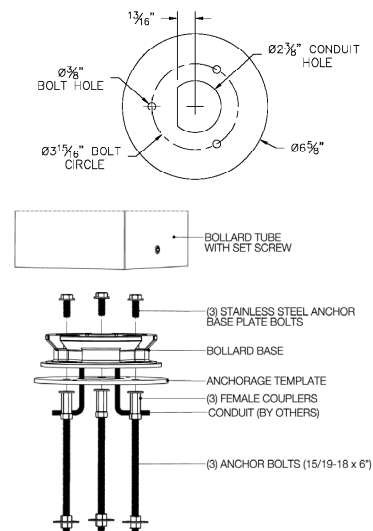


**Notice to Installer for 77 321:**

1. Fixture may be damaged if connected to conduit systems that contain water - Article 300-5G of the National Electric Code requires that "Conduits or raceways through which moisture may contact energized live parts shall be sealed or plugged at either or both ends."
2. 79 817 anchorage kit (included) must be installed in concrete pad/foundation.
3. It is recommended that when installing in planting areas the bollard base be slightly elevated to avoid prolonged submerging during heavy rains.
4. Wet location listing does not imply suitability for exposure to standing water for long periods of time.
5. LEDs are high-quality electronic components! Please avoid touching the light output opening of the LED directly during installation.

**79 817 anchorage installation:**

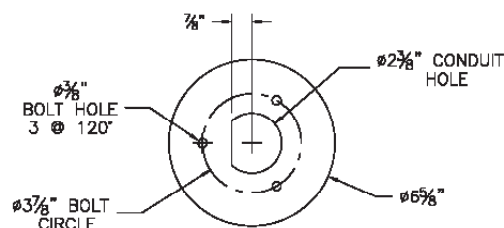
1. Provide means to bring supply wiring to the bollard in accordance with local code. The template has a 2-3/8" conduit hole for conduit entry.
2. Assemble anchorage kit. Unscrew the (3) hex bolts from the female couplers. Remove each hex bolt and washer. Align each anchor bolt with the hole in the template. Attach each anchor bolt to the template by replacing the washer and hex bolt and tightening. Do not remove nuts and washers from bottom of anchor bolt; this provides the pullout force.
3. Determine the finished grade for the application. Use leveling hardware to adjust template to desired finished height after pouring.
4. Install anchorage kit using either method:
  - A. Attach template to forming or cross bracing using the (2) nail holes provided in the template. Level template properly. Pour concrete.
  - B. Insert anchorage assembly into poured concrete. Concrete must be vibrated to ensure proper anchorage setting. Level template properly.



**77 321 installation:**

1. Remove (3) hex bolts and washers, once anchorage is set.
2. Remove template, making sure that there is a smooth, flat surface to mount the base.
3. Loosen the set screw at the base of the fixture. Turn the base plate and remove from bollard.
4. Align base plate holes with anchorage holes.
5. Bolt the base plate to the anchorage kit using the (3) hex bolts and washers.
6. Make supply wiring connections to wire leads from LED driver inside the fixture  
MAIN VOLTAGE SUPPLY WIRE TO BLACK LED DRIVER WIRE;  
NEUTRAL (COMMON) SUPPLY WIRE TO WHITE LED DRIVER WIRE;  
GREEN GROUND WIRE TO GREEN LED DRIVER WIRE  
Dimming (if applicable):  
DIMMING CONTROL WIRE (+) TO POSITIVE DRIVER DIM CONTROL WIRE  
DIMMING CONTROL WIRE (-) TO NEGATIVE DRIVER DIM CONTROL WIRE.
7. Place the bollard over the base plate so that the (3) notches in the base plate align with the top. Lock fixture into place by turning bollard 1/4 turn. Tighten 4mm set screw.

**Fig-1:**



**Relamping/Maintenance**

No relamping necessary.

**Accessories**

Please refer to the appropriate accessory installation sheet for further instruction when applicable.

Anchorage 79 817

**Replacement Parts**

Description	Part No
Lens	150390
Gasket	831220
Driver (120V-277V)	(x2) 75987
LED module (3000K)	(x4) LED-0270/930
LED module (4000K)	(x4) LED-0270/940

**Lamp:** (x2) 7.8W LED