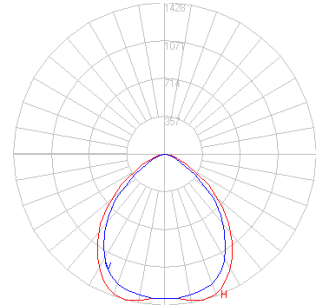


BEGA

Photometric Filename: 77539.ies

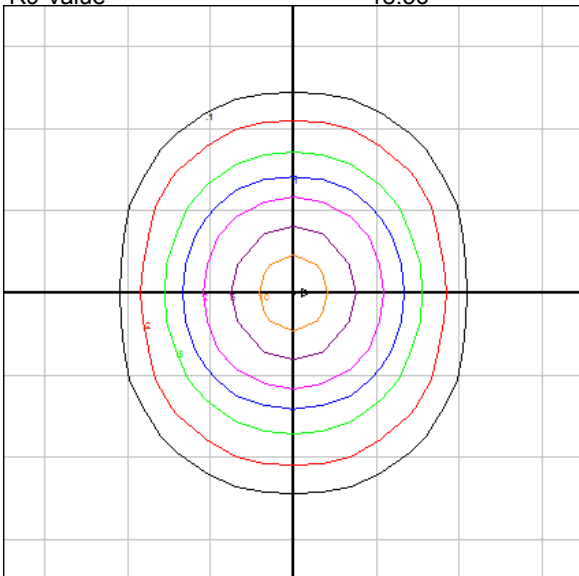
TEST: L10131106
TEST LAB: BEGA
DATE: 10/10/13
LUMINAIRE: 77 539
LAMP: 39W LED

All results in accordance with IESNA LM-79-08

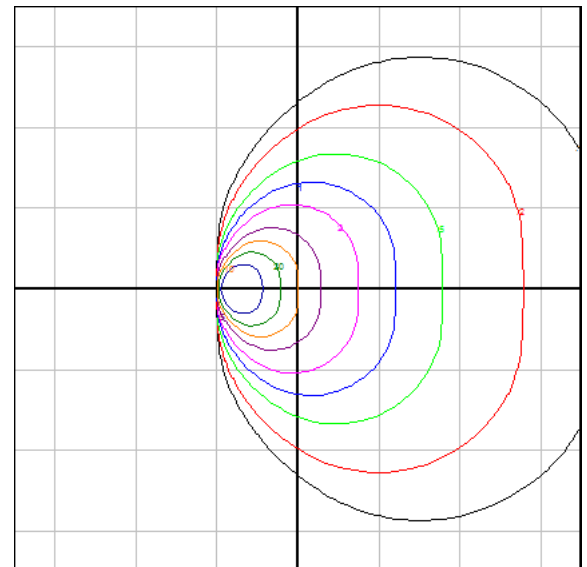


Characteristics

NEMA Type	7 H x 6 V
Maximum Candela	1428
Maximum Candela Angle	-15 H -3 V
Horizontal Beam Angle (50%)	96.5
Vertical Beam Angle (50%)	87.5
Horizontal Field Angle (10%)	141.8
Vertical Field Angle (10%)	127.4
Lumens Per Lamp	N.A. (absolute)
Total Lamp Lumens	N.A. (absolute)
Beam Lumens	2222
Beam Efficiency	N.A.
Field Lumens	2997
Field Efficiency	N.A.
Spill Lumens	100
Luminaire Lumens	3097
Total Efficiency	N.A.
Total Luminaire Watts	46.99
Ballast Factor	1.00
R9 Value	18.36



Mounting Height = 10 ft. Grid Spacing = 10 ft.



Beam Cross Section Grid Spacing = 5 ft.

In the interest of product improvement, BEGA reserves the right to make technical changes without notice.

BEGA 1000 Bega Way, Carpinteria, CA 93013 (805)684-0533 Fax (805)566-9474 www.bega-us.com © Copyright BEGA-US 2015

8/6/2015