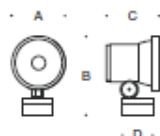


Tools Required:

3mm hex key
Flat head screw driver medium
Phillips head screw driver medium



Dimensions

A: 4-1/8 "
B: 5-7/8 "
C: 4-3/8 "
D: 3-1/2 "



Protection Class: IP65

Weight: 2.0 lbs.

Notice to Installer for 77 604:

1. See page 2 for specific product safety warnings.
2. Mounts directly to 19 538 small opening wiring box (provided). **IMPORTANT: DO NOT MAKE WALL CUTOUT FOR STANDARD WIRING BOX. OPENING MUST BE MADE FOR BEGA 19 538 WIRING BOX OR CUTOUT WILL BE VISIBLE.**
3. In conformance with UL Standard 1598, a silicone based sealant must be used between luminaire and supporting wall.
4. See installation sheet 99068, supplied, for detailed instructions on 538 small wiring box installation.
5. Requires a 24V DC class 2 electronic power supply to operate intended LED wattage.

77 604 - installation:

1. Remove luminaire mounting plate by loosening 3mm set screw on rear canopy of fixture.
2. Feed luminaire wires through back of luminaire mounting plate.
3. Make 24V DC supply wiring and luminaire connections in small opening wiring box:

NEGATIVE SUPPLY WIRE TO WHITE LUMINAIRE WIRE
POSITIVE SUPPLY WIRE TO BLACK LUMINAIRE WIRE

4. Attach mounting strap to wiring box using (2) 3/8" screws.
5. Attach mounting plate to mounting strap and wiring box by using (2) 8-32 x 1" mounting screws.
6. Place a small bead of silicone around the back side of the luminaire base that will come in contact with the finished surface.
7. Mount luminaire to mounting plate. Tighten 3mm set screw to secure.

Figure 1

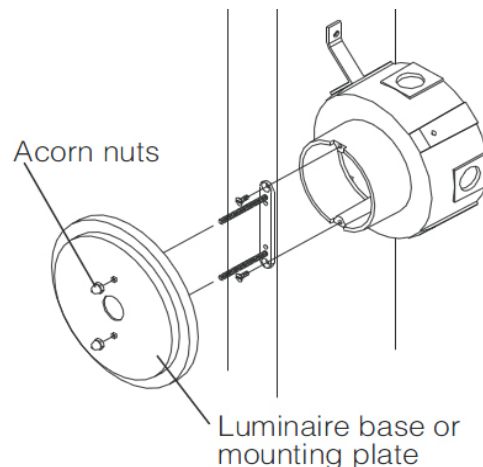
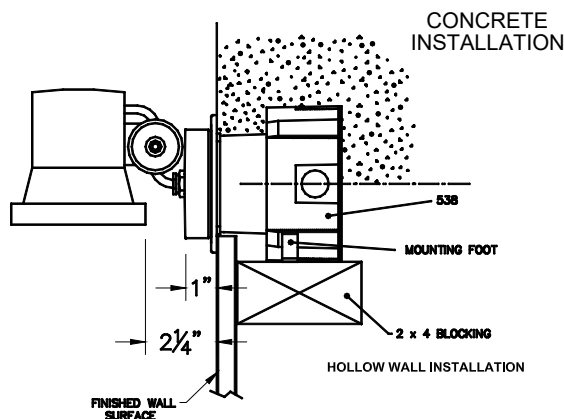


Figure 2



Relamping/Maintenance

Remove trim and lens by loosening screws. Clean luminaire and lens using only solvent-free cleansers. Replace trim and lens. Tighten screws.

Accessories

Please refer to the appropriate accessory installation sheet for further instruction when applicable.

Replacement Parts

Description	Part No
Lens	140850
Lens gasket	831652
LED Driver	76014
LED Module (3000K)	LED-0733/830
LED Module (4000K)	LED-0733/840

Lamp: 7.9W LED, 24V DC

Small opening wiring box	19 538
Flat beam spread lens	70 065
180° glare shield	70 758
Remote 25W LED driver/box	19 580
Remote 50W LED driver/box	19 591

In the interest of product improvement, BEGA reserves the right to make technical changes without notice.

Product Safety Warnings:

CAUTION - RISK OF FIRE. THIS PRODUCT MUST BE INSTALLED IN ACCORDANCE WITH THE APPLICABLE INSTALLATION CODE BY A PERSON FAMILIAR WITH THE CONSTRUCTION AND OPERATION OF THE PRODUCT AND THE HAZARDS INVOLVED. SUITABLE FOR WET LOCATIONS.

MIN 90°C SUPPLY CONDUCTORS.

ATTENTION - RISQUE D'INCENDIE. CE PRODUIT DOIT ÊTRE INSTALLÉ SELON LE CODE D'INSTALLATION PERTINENT, PAR UNE PERSONNE QUI CONNAÎT BIEN LE PRODUIT ET SON FONCTIONNEMENT AINSI QUE LES RISQUES INHÉRENTS. CONVIENT AUX EMPLACEMENTS MOUILLÉS.

LES FILS D'ALIMENTATION 90°C MIN.
