

Application

In-grade adjustable floodlight luminaires. These luminaires are designed to bear especially high pressure loads of up to 11,000 lbs from vehicles with pneumatic tires. The luminaires must not be used for traffic lanes where they are subject to horizontal pressure from vehicles braking, accelerating and changing direction. The inclination angle is adjustable from 0-30° in 3° increments, and the optical assembly can be rotated 180° around the vertical axis.

Materials

- Clear safety glass
- Corrosion-resistant 304 grade stainless steel
- High temperature silicone gasket
- Fully potted waterstopper cable
- Pure anodized aluminum reflector

NRTL listed to North American Standards, suitable for wet locations
Protection class IP 68

Weight: 16.3lbs.

Electrical

- Operating voltage120-277VAC
- Minimum start temperature-30° C
- LED module wattage17.8W
- System wattage22.8W
- Controllability0-10V dimming down to 1%
- Color rendering indexRa > 80
- Luminaire lumens1028lm
- LED service life (L70)60000hrs

LED color temperature

- 4000K (K4)
- 3500K (K35)
- 3000K (K3)
- 2700K (K27)

BEGA can supply you with suitable LED replacement modules for up to 20 years after the purchase of LED luminaires - see website for details

Finish

#4 brushed stainless steel. Custom colors are not available.

Type:

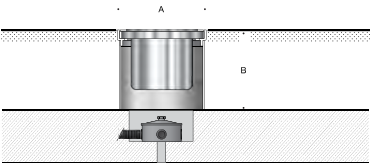
BEGA Product:

Project:

Modified:

Available options

- B70273Round spread lens
- B70274Elliptical spread lens
- FSCFusing
- NSLNon-skid lens



In-grade luminaire · Adjustable				
	LED	<input type="checkbox"/>	A	B
B77629	17.8W	19°	10	8 ³ / ₄

