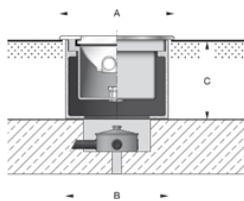


Tools Required:

5mm hex key
Phillips medium screwdriver



Dimensions

A: 4-5/8 x 60-1/2 "
B: 4-1/4 x 60-1/8 "
C: 5 "



Protection Class: IP67

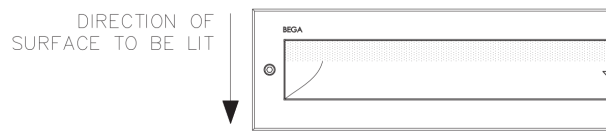
Weight: 43 lbs

Notice to Installer for 77 647:

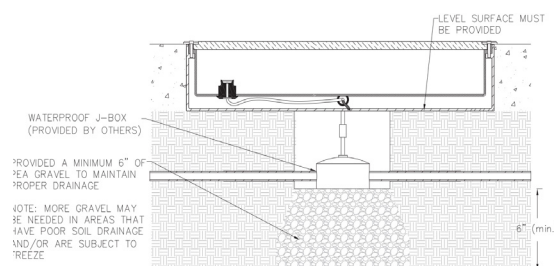
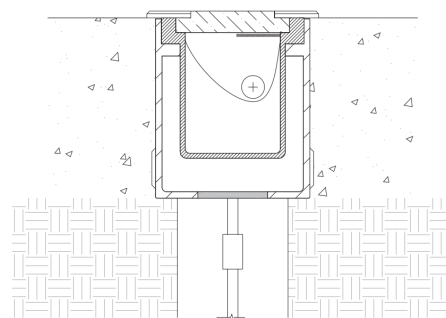
- See page 2 for specific product safety warnings.
- BEGA luminaires may be damaged if connected to conduit systems containing water - Article 300-5G of National Electric Code requires that "Conduits or raceways through which moisture may contact energized live parts shall be sealed or plugged at either or both ends".**
- A separate wiring box suitable for outdoor locations (Bell #5320-0 or equivalent) for power supply must be provided (by others).
- Proper drainage **MUST** be provided for wiring box and fixture housing.
- For proper installation, housing and finished surface must be installed so that the top of the housing (bottom of faceplate) sits flush or slightly above the finished surface.
- Must be anchored to a grade medium (1-1/2" minimum depth) which is suitable for vehicular and pedestrian loads.
- When installing fixture in organic mulch, surround installation housing with approximately 6" of sand or other non-organic material.
- Integral LED driver supplied along with LED module.
- WARNING:** LEDs are high quality electrical components. Please avoid touching them directly during installation.

77 647 - installation:

- Loosen the (2) 5mm hex screws on faceplate in order to remove inner housing from outer housing. Remove inner housing. Do NOT open inner housing.
- Establish location of wiring box. (These luminaires are pre-wired with (9) feet of waterproof cable, factory sealed to the luminaire housing.) Make sure that enough cable is left to lift the inner housing out of the outer housing for luminaire maintenance. Provide proper drainage.
- Establish foundation for anchorage. Use (4) mounting holes in the bottom of outer housing to anchor it to a suitable foundation using hardware (by others). The top edge of the outer housing must be flush with the finished surface. Insert the wooden spacer provided by others to provide stability when finishing the surface. Finish surface.
- Make supply wiring and cable connections inside wiring box:
MAIN VOLTAGE SUPPLY WIRE TO BLACK LUMINAIRE WIRE;
NEUTRAL (COMMON) SUPPLY WIRE TO WHITE LUMINAIRE WIRE;
GREEN (GROUND) WIRE TO GREEN LUMINAIRE WIRE
Dimming (if applicable):
DIMMING CONTROL WIRE (+) TO POSITIVE DRIVER DIM CONTROL WIRE
DIMMING CONTROL WIRE (-) TO NEGATIVE DRIVER DIM CONTROL WIRE
- Replace inner housing into outer [recessed] housing. Tighten (2) faceplate screws to secure housing.



ILLUMINATED SURFACE



NOTE: Graphics are generic. Please see fixture submittal drawing for more detail.
www.bega-us.com

Relamping/Maintenance

No relamping necessary.

Accessories

Please refer to the appropriate accessory installation sheet for further instruction when applicable.

Replacement Parts

Description	Part No
Lens	140656
Lens Gasket	83001739
LED Driver (120-277V)	75989-03
LED Module (3000K)	(x4) LED-0371/830
LED Module (4000K)	(x4) LED-0371/840

Lamp: 50.4W LED

Product Safety Warnings:

THIS PRODUCT MUST BE INSTALLED IN ACCORDANCE WITH THE APPLICABLE INSTALLATION CODE BY A PERSON FAMILIAR WITH THE CONSTRUCTION AND OPERATION OF THE PRODUCT AND THE HAZARDS INVOLVED. SUITABLE FOR WET LOCATIONS.

MIN 90°C SUPPLY CONDUCTORS.

CE PRODUIT DOIT ÊTRE INSTALLÉ SELON LE CODE D'INSTALLATION PERTINENT, PAR UNE PERSONNE QUI CONNAÎT BIEN LE PRODUIT ET SON FONCTIONNEMENT AINSI QUE LES RISQUES INHÉRENTS. CONVIENT AUX EMPLACEMENTS MOUILLÉS.

LES FILS D'ALIMENTATION 90°C MIN.
