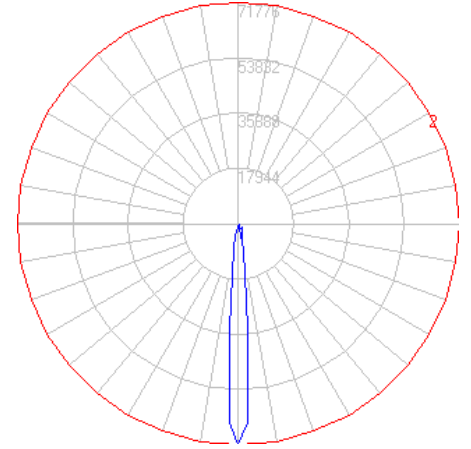


BEGA

Photometric Filename: 77651.ies

TEST: BE_77651
 TEST LAB: BEGA
 DATE: 6/18/2014
 LUMINAIRE: 77 651
 LAMP: 47.5W LED

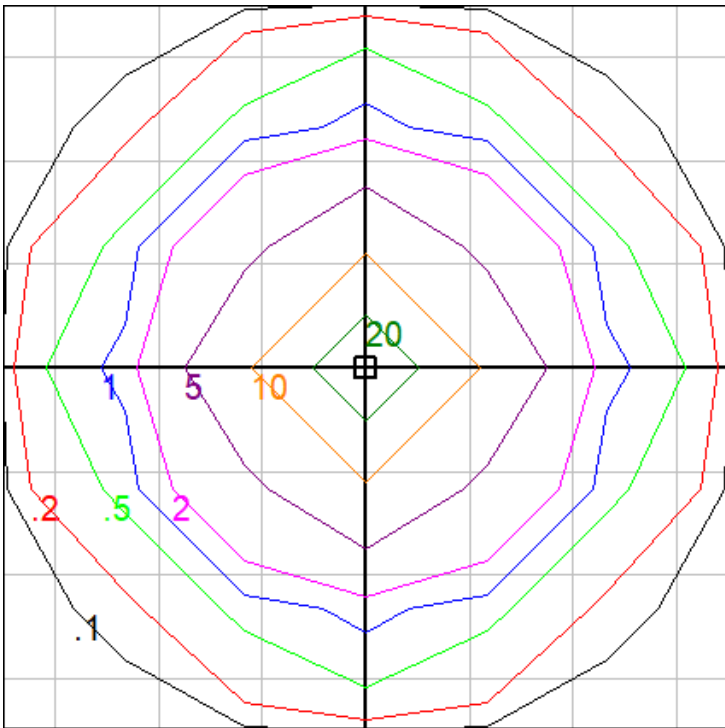


Characteristics

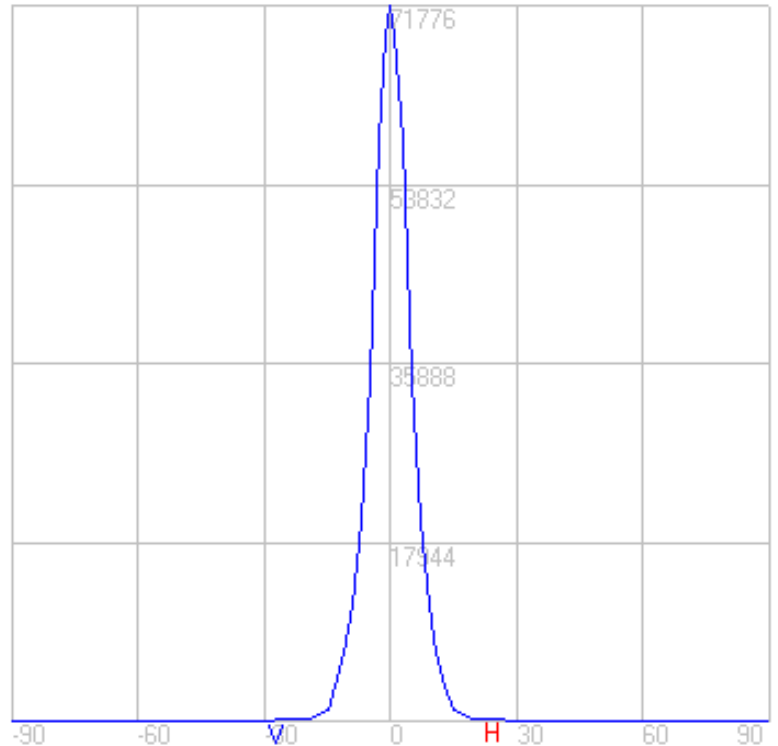
NEMA Type	2 H x 2 V
Maximum Candela	71776.4
Maximum Candela Angle	0 H 0 V
Horizontal Beam Angle (50%)	9.8
Vertical Beam Angle (50%)	9.8
Horizontal Field Angle (10%)	21.7
Vertical Field Angle (10%)	21.7
Lumens Per Lamp	N.A. (absolute)
Total Lamp Lumens	N.A. (absolute)
Beam Lumens	1284
Beam Efficiency	N.A.
Field Lumens	2674
Field Efficiency	N.A.
Spill Lumens	542
Luminaire Lumens	3216
Total Efficiency	N.A.
Total Luminaire Watts	53
Ballast Factor	1.00

Zonal Lumen Summary

Zone	Lumens
0-10	2579.32
10-20	602.06
20-30	64.72
30-40	21.87
40-50	7.15
50-60	2.37
60-70	0.66
70-80	0.14
80-90	0.00
90-100	0.00
100-110	0.00
110-120	0.00
120-130	0.00
130-140	0.00
140-150	0.00
150-160	0.00
160-170	0.00
170-180	0.00



Setback = 50 ft. Grid Spacing = 5 ft.

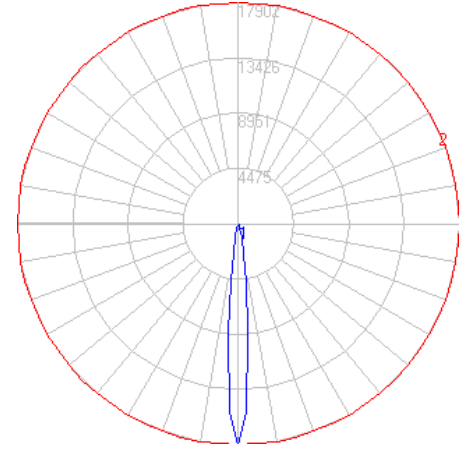
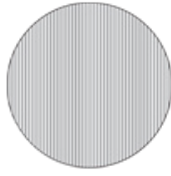


In the interest of product improvement, BEGA reserves the right to make technical changes without notice.

BEGA

Photometric Filename: 77651_70077.ies

TEST: BE_77651_70077
 TEST LAB: BEGA
 DATE: 6/18/2014
 LUMINAIRE: 77 651 + 70 077
 LAMP: 47.5W LED

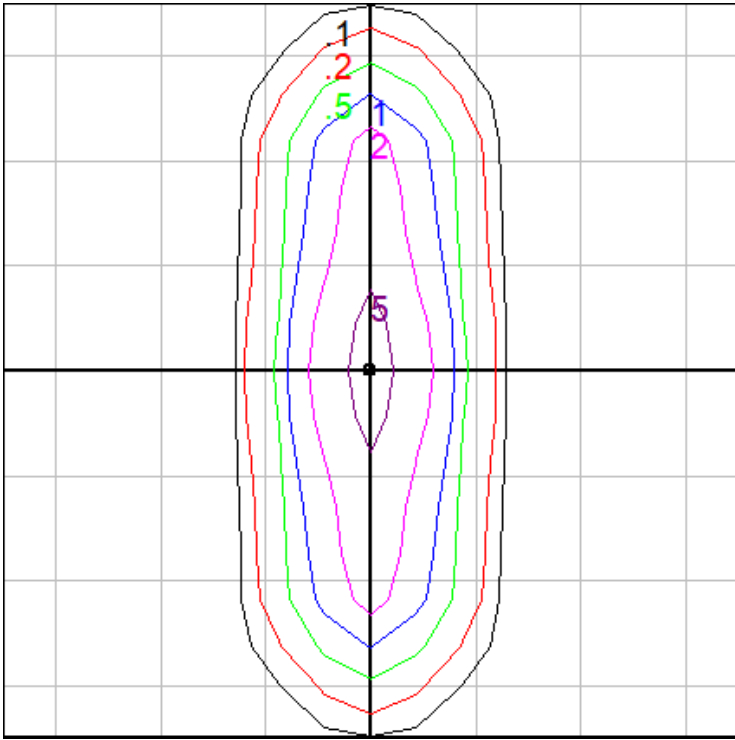


Characteristics

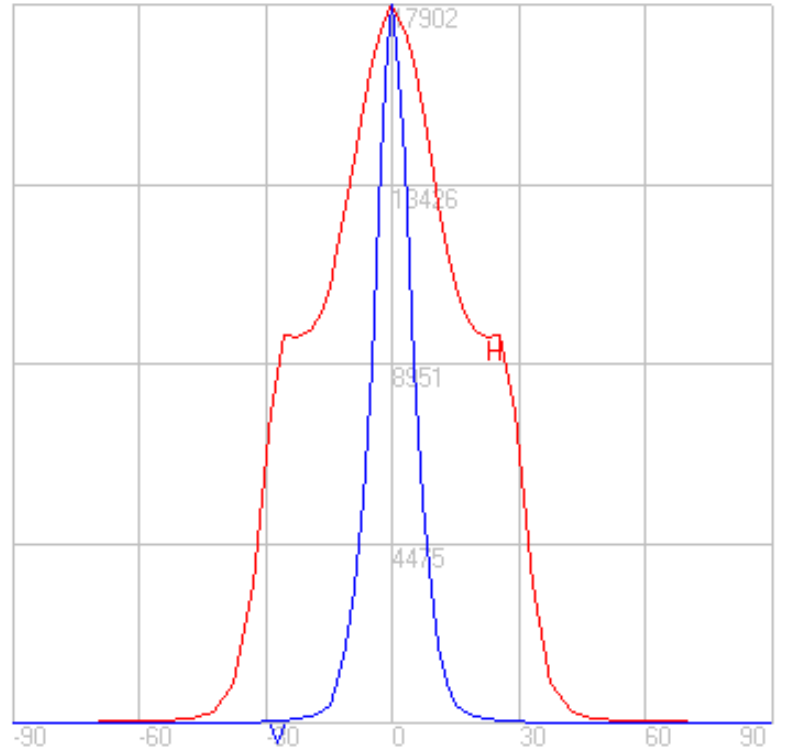
NEMA Type	5 H x 2 V
Maximum Candela	17901.5
Maximum Candela Angle	0 H 0 V
Horizontal Beam Angle (50%)	53.7
Vertical Beam Angle (50%)	9.9
Horizontal Field Angle (10%)	72.1
Vertical Field Angle (10%)	22.6
Lumens Per Lamp	N.A. (absolute)
Total Lamp Lumens	N.A. (absolute)
Beam Lumens	1178
Beam Efficiency	N.A.
Field Lumens	2618
Field Efficiency	N.A.
Spill Lumens	366
Luminaire Lumens	2983
Total Efficiency	N.A.
Total Luminaire Watts	53
Ballast Factor	1.00

Zonal Lumen Summary

Zone	Lumens
0-10	996.21
10-20	963.32
20-30	723.81
30-40	253.24
40-50	34.58
50-60	12.91
60-70	6.26
70-80	2.53
80-90	0.38
90-100	0.00
100-110	0.00
110-120	0.00
120-130	0.00
130-140	0.00
140-150	0.00
150-160	0.00
160-170	0.00
170-180	0.00



Setback = 50 ft. Grid Spacing = 12 ft.

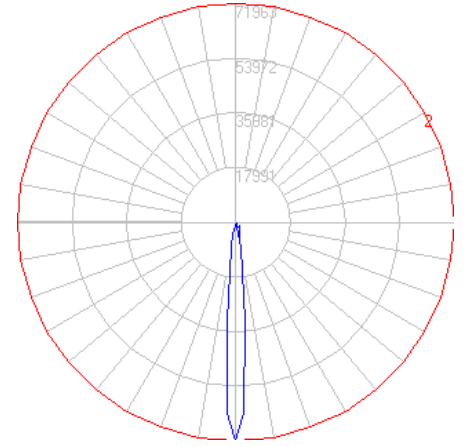


In the interest of product improvement, BEGA reserves the right to make technical changes without notice.

BEGA

Photometric Filename: 77651_70721.ies

TEST: BE_77651_70721
 TEST LAB: BEGA
 DATE: 6/18/2014
 LUMINAIRE: 77 651 + 70 721
 LAMP: 47.5W LED

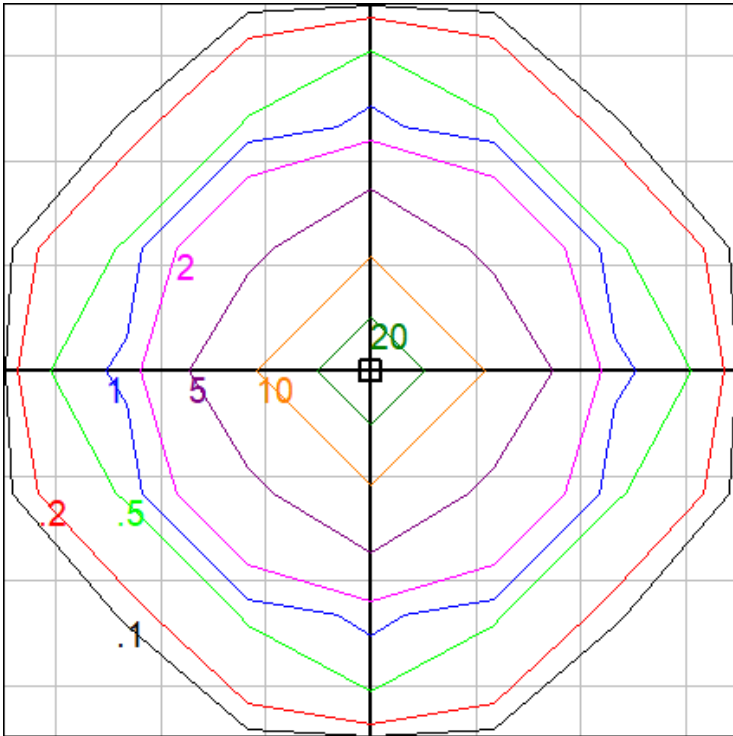


Characteristics

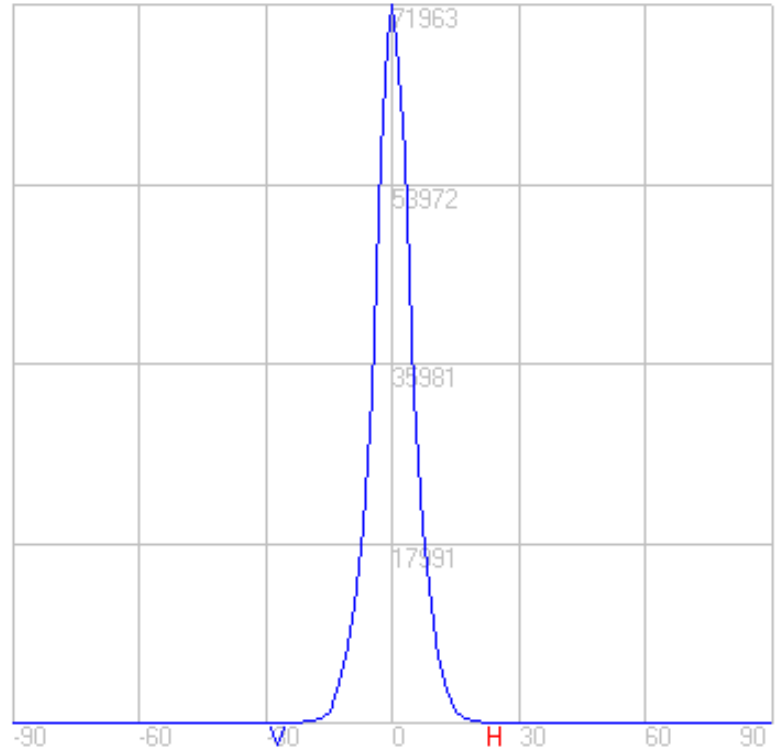
NEMA Type	2 H x 2 V
Maximum Candela	71962.7
Maximum Candela Angle	0 H 0 V
Horizontal Beam Angle (50%)	9.5
Vertical Beam Angle (50%)	9.5
Horizontal Field Angle (10%)	21.6
Vertical Field Angle (10%)	21.6
Lumens Per Lamp	N.A. (absolute)
Total Lamp Lumens	N.A. (absolute)
Beam Lumens	1251
Beam Efficiency	N.A.
Field Lumens	2608
Field Efficiency	N.A.
Spill Lumens	446
Luminaire Lumens	3055
Total Efficiency	N.A.
Total Luminaire Watts	53
Ballast Factor	1.00

Zonal Lumen Summary

Zone	Lumens
0-10	2515.44
10-20	572.66
20-30	28.13
30-40	1.47
40-50	0.11
50-60	0.00
60-70	0.00
70-80	0.00
80-90	0.00
90-100	0.00
100-110	0.00
110-120	0.00
120-130	0.00
130-140	0.00
140-150	0.00
150-160	0.00
160-170	0.00
170-180	0.00



Setback = 50 ft. Grid Spacing = 5 ft.



In the interest of product improvement, BEGA reserves the right to make technical changes without notice.