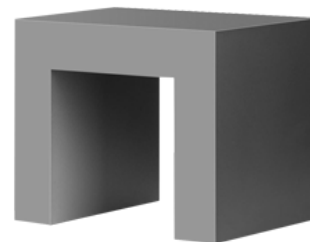
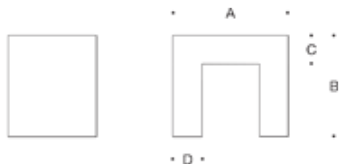


Tools Required:

5mm hex key
Phillips medium screwdriver
Adjustable wrench

Dimensions

A: 19-5/8" x 15-3/4"
B: 18-1/8"
C: 4-3/4"
D: 4-3/4"



Protection Class: IP65

Weight: 41.9 lbs.

Notice to Installer for 77 731:

1. Fixture may be damaged if connected to conduit systems that contain water - Article 300-5G of the National Electric Code requires that "Conduits or raceways through which moisture may contact energized live parts shall be sealed or plugged at either or both ends."
2. 79 810 anchorage kit (included) must be installed in concrete pad/foundation.
3. It is recommended that when installing in planting areas the bollard base be slightly elevated to avoid prolonged submerging during heavy rains.
4. Wet location listing does not imply suitability for exposure to standing water for long periods of time.
5. LEDs are high-quality electronic components! Please avoid touching the light output opening of the LED directly during installation.

79 810 anchorage installation:

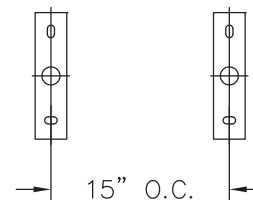
1. Provide means to bring supply wiring to the light element in accordance with the local code. The templates have 2" O.D. conduit holes for conduit entry.
2. Assemble anchorage kit. Unscrew the (4) hex bolts from the female couplers. Remove each hex bolt and washer. Align each anchor bolt with each of the holes in the two templates. Attach each anchor bolt to the templates by replacing the washer and hex bolt and tightening.
3. Determine the finished grade for the application. Use leveling hardware to adjust templates to desired finished height after pouring.
4. Install anchorage kit using either method:
 - A. Attach templates to forming or cross bracing using the (2) nail holes provided in each template. Level templates properly. Pour concrete.
 - B. Insert anchorage assembly into poured concrete. Concrete must be vibrated to ensure proper anchorage setting. Level templates properly.

77 731 installation:

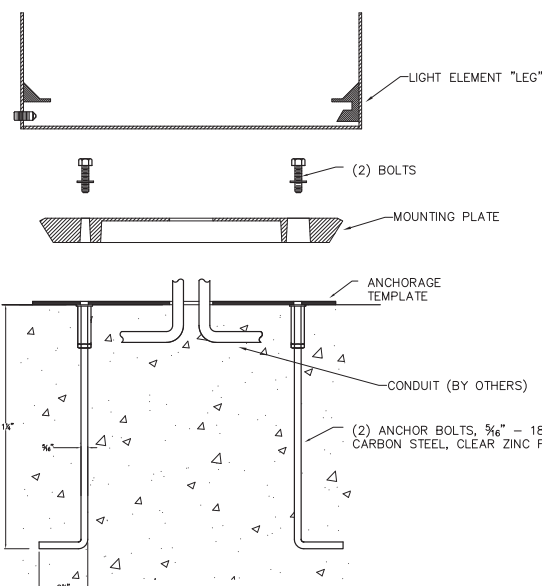
1. Loosen (4) 5mm hex set screws at base of legs and remove mounting plates.
2. Leave anchorage templates in place to provide a smooth, flat surface to install mounting plates.
3. Align mounting plate holes with anchorage holes.
4. Bolt the mounting plates to the anchorage kits using the (4) hex bolts and washers.
5. Make supply wiring and luminaire wiring connections [on both sides of fixture] inside wiring box(es):

MAIN VOLTAGE SUPPLY WIRE TO BLACK LUMINAIRE WIRE;
NEUTRAL (COMMON) SUPPLY WIRE TO WHITE LUMINAIRE WIRE;
GREEN GROUND WIRE TO GREEN LUMINAIRE WIRE.

Dimming (if applicable):
DIMMING CONTROL WIRE (+) TO POSITIVE DRIVER DIM CONTROL WIRE
DIMMING CONTROL WIRE (-) TO NEGATIVE DRIVER DIM CONTROL WIRE
6. Place light element onto mounting plates and tighten (4) set screws to secure.



O.C. SPACING FOR 77 750
LIGHT ELEMENT



MOUNTING DETAIL — PER SIDE

Relamping/Maintenance

No relamping necessary.

Accessories

Please refer to the appropriate accessory installation sheet for further instruction when applicable.

Anchor Kit 79 810

Replacement Parts

Description	Part No
Face Plate	FP7731
Driver (120-277V)	75939
LED Module (3000K)	(x2) LED-0139/830
LED Module (4000K)	(x2) LED-0139/840

Lamp: 6.0W LED Module

Product Safety Warnings:

MIN 60°C SUPPLY CONDUCTORS.

THIS PRODUCT MUST BE INSTALLED IN ACCORDANCE WITH THE APPLICABLE INSTALLATION CODE BY A PERSON FAMILIAR WITH THE CONSTRUCTION AND OPERATION OF THE PRODUCT AND THE HAZARDS INVOLVED.

SUITABLE FOR WET LOCATIONS.

LES FILS D'ALIMENTATION 60°C MIN.

CE PRODUIT DOIT ÊTRE INSTALLÉ SELON LE CODE D'INSTALLATION PERTINENT, PAR UNE PERSONNE QUI CONNAÎT BIEN LE PRODUIT ET SON FONCTIONNEMENT AINSI QUE LES RISQUES INHÉRENTS.

CONVIENT AUX EMPLACEMENTS MOUILLÉS.