

**Tools Required:**

5mm hex key  
3mm hex key  
Adjustable wrench  
1/2" nut driver  
Philips medium screwdriver

**Protection Class:** IP65

**Weight:** 20.1 lbs.

**Notice to Installer for 77 762:**

1. See page 2 for specific product safety warnings.
2. Fixture may be damaged if connected to conduit systems that contain water - Article 300-5G of the National Electric Code requires that "Conduits or raceways through which moisture may contact energized live parts shall be sealed or plugged at either or both ends."
3. 79 818 anchorage kit (included) must be installed in concrete pad/foundation.
4. It is recommended that when installing in planting areas the bollard base be slightly elevated to avoid prolonged submerging during heavy rains.
5. Wet location listing does not imply suitability for exposure to standing water for long periods of time.

**79 818 anchorage installation:**

1. Provide means to bring supply wiring to the bollard in accordance with local code. The template has a 3" conduit hole for conduit entry.
2. Assemble anchorage kit. Unscrew the (3) hex bolts from the female couplers. Remove each hex bolt and washer. Align each anchor bolt with the hole in the template. Attach each anchor bolt to the template by replacing the washer and hex bolt and tightening. Do not remove nuts and washers from bottom of anchor bolt; this provides the pullout force.
3. Determine the finished grade for the application. Use leveling hardware to adjust template to desired finished height after pouring.
4. Install anchorage kit using either method:
  - A. Attach template to forming or cross bracing using the (2) nail holes provided in the template. Level template properly. Pour concrete.
  - B. Insert anchorage assembly into poured concrete. Concrete must be vibrated to ensure proper anchorage setting. Level template properly.

**IMPORTANT: ORIENT TEMPLATE ACCORDING TO FIG-1 FOR DESIRED DIRECTION OF BOLLARD HEAD.**

**77 762 installation:**

1. Remove (3) hex bolts and washers, once anchorage is set.
2. Remove template. Smooth concrete pad as required.
 

**NOTE:** Allow adequate time for concrete to cure properly.
3. Remove base plate from bollard by loosening 5mm set screw near bollard base.
4. Align base plate holes with anchorage holes.
5. Bolt the base plate to the anchorage kit using the (3) hex bolts and washers.
6. Make supply wiring connections to wire leads from ballast inside the fixture
 

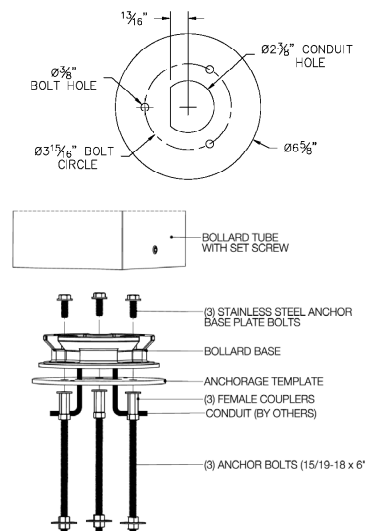
MAIN VOLTAGE SUPPLY WIRE TO BLACK BALLAST WIRE;  
NEUTRAL (COMMON) SUPPLY WIRE TO WHITE BALLAST WIRE;  
GREEN GROUND WIRE TO GREEN BALLAST WIRE.

Dimming (if applicable):  
DIMMING CONTROL WIRE (+) TO POSITIVE DRIVER DIM CONTROL WIRE  
DIMMING CONTROL WIRE (-) TO NEGATIVE DRIVER DIM CONTROL WIRE
7. Place the bollard over the base plate so that the (3) notches in the base plate align with the top. Lock fixture into place by turning bollard to desired orientation and tightening set screw at base.

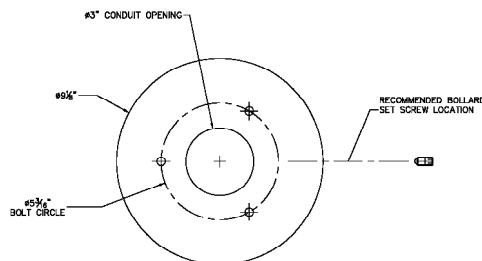


**Dimensions**

**A:** 6-1/2"  
**B:** 33-7/8"  
**C:** 8-5/8"



**Fig-1:**



**Relamping/Maintenance**

Loosen 3mm set screws and remove top for LED access. Clean luminaire and lens using solvent-free cleansers only. Replace top and tighten set screws, making sure gasket is seated properly.

**Accessories**

Please refer to the appropriate accessory installation sheet for further instruction when applicable.

Anchorage 79 818

**Replacement Parts**

| Description        | Part No      |
|--------------------|--------------|
| Lens               | 112654       |
| Lens Gasket        | 830774       |
| Driver (120-277V)  | 76048        |
| LED Module (3000K) | LED-0485/830 |
| LED Module (4000K) | LED-0485/840 |

**Lamp:** 17.5W LED

**Product Safety Warnings:**

**THIS PRODUCT MUST BE INSTALLED IN ACCORDANCE WITH THE APPLICABLE INSTALLATION CODE BY A PERSON FAMILIAR WITH THE CONSTRUCTION AND OPERATION OF THE PRODUCT AND THE HAZARDS INVOLVED. SUITABLE FOR WET LOCATIONS.**

**MIN 60°C SUPPLY CONDUCTORS.**

**CE PRODUIT DOIT ÊTRE INSTALLÉ SELON LE CODE D'INSTALLATION PERTINENT, PAR UNE PERSONNE QUI CONNAÎT BIEN LE PRODUIT ET SON FONCTIONNEMENT AINSI QUE LES RISQUES INHÉRENTS. CONVIENT AUX EMPLACEMENTS MOUILLÉS.**

**LES FILS D'ALIMENTATION 60°C MIN.**

---