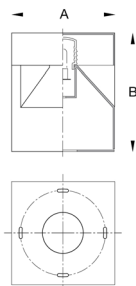


**Tools Required:**

8mm hex key  
Adjustable wrench medium



**Dimensions**

A: 15-3/4 "  
B: 18 "



**Protection Class:** IP 65

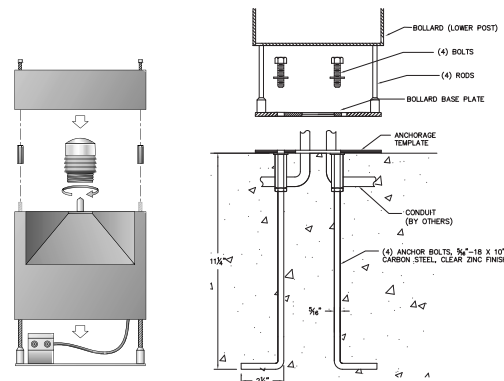
**Weight:** 58.4 lbs.

**Notice to Installer for 77 786:**

1. Fixture may be damaged if connected to conduit systems that contain water - Article 300-5G of the National Electric Code requires that "Conduits or raceways through which moisture may contact energized live parts shall be sealed or plugged at either or both ends."
2. 79 804 anchorage kit (included) must be installed in concrete pad/foundation.
3. It is recommended that when installing in planting areas the bollard base be slightly elevated to avoid prolonged submerging during heavy rains.
4. Wet location listing does not imply suitability for exposure to standing water for long periods of time.
5. LEDs are high-quality electronic components! Please avoid touching the light output opening of the LED directly during installation.

**79 804 anchorage installation:**

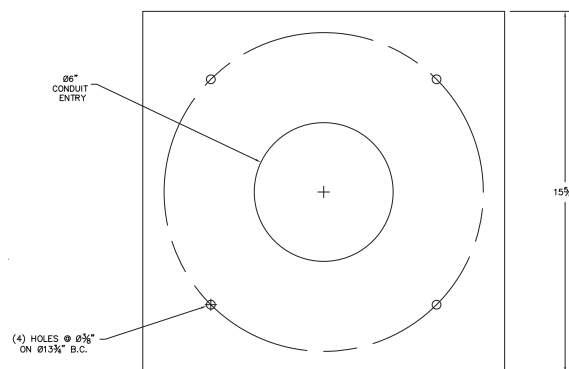
1. Provide means to bring supply wiring to the bollard in accordance with local code. The template has a 6" conduit hole for conduit entry.
2. Assemble anchorage kit. Unscrew the (4) hex bolts from the female couplers. Remove each hex bolt and washer. Align each anchor bolt with the hole in the template. Attach each anchor bolt to the template by replacing the washer and hex bolt and tightening.
3. Determine the finished grade for the application. Use leveling hardware to adjust template to desired finished height after pouring.
4. Install anchorage kit using either method:
  - A. Attach template to forming or cross bracing. Level template properly. Pour concrete.
  - B. Insert anchorage assembly into poured concrete. Concrete must be vibrated to ensure proper anchorage setting. Level template properly.



**ANCHORAGE 79 504**

**77 786 installation:**

1. Loosen (2) 8mm hex bolts on side of main casting and lift bollard top from bollard base.
2. Unscrew glass cylinder from inside bollard.
3. Remove (4) hex couplers and lift bollard base vertically from the mounting plate.
4. Remove (4) hex bolts and washers, once anchorage is set.
5. Leave template in place to provide a smooth, flat surface to mount the base.
6. Align mounting plate holes with anchorage holes.
7. Bolt the mounting plate to the anchorage kit using the (4) hex bolts and washers.
8. Connect luminaire wires (provided) to site supply wires:
  - CONNECT NEUTRAL SUPPLY WIRE TO WHITE FIXTURE LEAD
  - CONNECT MAIN VOLTAGE (LINE) SUPPLY WIRE TO BLACK FIXTURE LEAD
  - CONNECT GREEN SUPPLY WIRE TO GREEN FIXTURE LEAD
- Dimming (if applicable):
  - DIMMING CONTROL WIRE (+) TO POSITIVE DRIVER DIM CONTROL WIRE
  - DIMMING CONTROL WIRE (-) TO NEGATIVE DRIVER DIM CONTROL WIRE
9. Place the bollard base over the mounting plate so that the (4) notches in the mounting plate align with the base.
10. Mount bollard onto mounting plate and secure with (4) hex couplers and tighten.
11. Replace glass cylinder inside the bollard and tighten.
13. Replace bollard top and secure with (2) hex bolts.



**TEMPLATE DETAIL**

**Relamping/Maintenance**

No relamping required

**Accessories**

Please refer to the appropriate accessory installation sheet for further instruction when applicable.

**Replacement Parts**

Description	Part No
Glas	11267342
Glass Gasket	830769
Driver (120V-277V)	75985-01
LED Module (3000K)	(x4) LED-0217/830
LED Module (4000K)	(x4) LED-0217/840

**Lamp:** 15.6W LED

Anchorage 79 804

In the interest of product improvement, BEGA reserves the right to make technical changes without notice.

**Product Safety Warnings:**

**THIS PRODUCT MUST BE INSTALLED IN ACCORDANCE WITH THE APPLICABLE INSTALLATION CODE BY A PERSON FAMILIAR WITH THE CONSTRUCTION AND OPERATION OF THE PRODUCT AND THE HAZARDS INVOLVED. SUITABLE FOR WET LOCATIONS.**

**MIN 90°C SUPPLY CONDUCTORS.**

**CE PRODUIT DOIT ÊTRE INSTALLÉ SELON LE CODE D'INSTALLATION PERTINENT, PAR UNE PERSONNE QUI CONNAÎT BIEN LE PRODUIT ET SON FONCTIONNEMENT AINSI QUE LES RISQUES INHÉRENTS. CONVIENT AUX EMPLACEMENTS MOUILLÉS.**

**LES FILS D'ALIMENTATION 90°C MIN.**

---