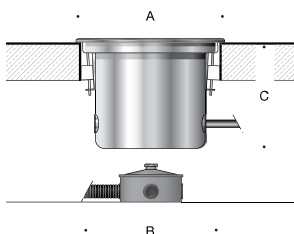


Tools Required:

- T30 torx head screwdriver
- Torque wrench
- T25 torx head screwdriver

Overview:

LED Watts: 7.3W
 System Watts: 10W
 Controllability: 0-10V dimming
 Weight: 11.1 lbs.
 Protection Class: IP68



Dimensions

A: 12-7/8
B: 11-7/8
C: 9



Notice to Installer:

1. **BEGA luminaires may be damaged if connected to conduit systems containing water - Article 300-5G of National Electric Code requires that "Conduits or raceways through which moisture may contact energized live parts shall be sealed or plugged at either or both ends".**
2. A separate wiring box suitable for outdoor locations for power supply connections must be provided (by others).
3. Proper drainage **MUST** be provided. Failure to do so may result in condensation and void warranty.
4. For proper installation, housing and finished surface must be installed so that the top of the housing (bottom of faceplate) sits flush or slightly above the finished surface.
5. For vehicular loads, housing must be anchored to a suitable, load bearing foundation. In all other applications, load bearing foundation should be sufficient to support anticipated load onto fixture.
6. Do not use power tools to open and close fixture, use hand tools only. Failure to do so can result in incorrect sealing of fixture and void warranty.
7. Warning: LEDs are high quality electrical components. Please avoid touching them directly during installation.

Luminaire 77815 Installation:

1. Establish location of wiring box, by others. Note that the luminaire is pre-wired with 7.5' of waterproof cable, factory sealed to the luminaire house. Ensure proper drainage is provided. A minimum of 6" of pea gravel is required under wiring box. More gravel may be required in areas that have poor soil drainage and/or are subjected to freeze. See Figure 1
2. Ensure pre-cored hole meets the minimum requirements. Minimum opening of 11-7/8" diameter and a finish grade material thickness of 1-1/2" required. See Figure 1
3. Insert installation sleeve into pre-cored hole and secure into place using hardware (by others) as needed.
4. Make supply wiring and cable connections inside wiring box using Kit #40 waterproof connector kit (provided)
 - MAIN VOLTAGE SUPPLY WIRE TO BLACK LUMINAIRE WIRE
 - NEUTRAL (COMMON) SUPPLY WIRE TO WHITE LUMINAIRE WIRE
 - GREEN GROUND WIRE TO GREEN LUMINAIRE WIRE
- Dimming (if applicable):
 - DIMMING CONTROL WIRE (+) TO POSITIVE DRIVER DIM CONTROL WIRE
 - DIMMING CONTROL WIRE (-) TO NEGATIVE DRIVER DIM CONTROL WIRE
5. Loosen (6) T30 torx head screws and remove faceplate. Carefully pull out gasket and diffuser. See Figure 2.
6. The housing is provided with (4) wedge-shaped clamps designed to mount into a pre-core hole that meets the minimum requirements stated in step 2. Loosen the (4) T25 torx head screws to adjust the clamps and insert the housing into the prepared hole. See Figure 3.
7. Tighten the (4) T25 torx head screws to secure the housing firmly in place. Ensure housing is flush with finished surface or slightly above. Failure to do so could prohibit fixture from sealing correctly and will void warranty.
8. Replace gasket and glass and ensure gasket is oriented correctly and is clear of any debris.
9. Replace faceplate and hand-tighten the (6) T30 torx head screws in a star pattern to evenly compress gasket and seal fixture. Final torque value on faceplate screws should be 5-Nm.

Figure 1:

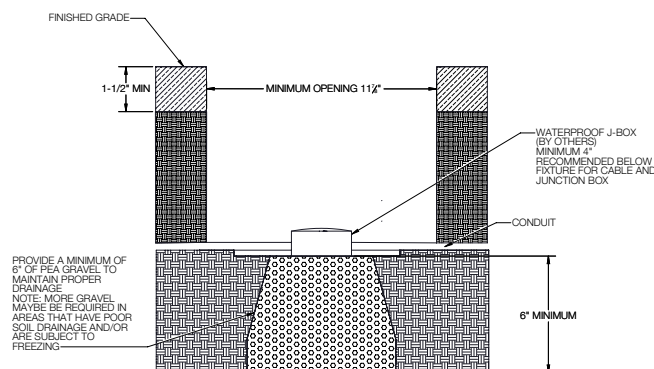


Figure 2:



Figure 3:



Accessories

Please refer to the appropriate accessory installation sheet for further instruction when applicable.

Maintenance:

Routinely clean stainless steel with a solution of warm water and gentle detergent or stainless steel cleaner. For installation in more corrosive locations, an annual application of a corrosion protection film is recommended such as BEGA part #95420.

Replacement Parts

See label inside of fixture for LED replacement part number.

Consult factory for all other replacement components.

Product Safety Warnings:

THIS PRODUCT MUST BE INSTALLED IN ACCORDANCE WITH THE APPLICABLE INSTALLATION CODE BY A PERSON FAMILIAR WITH THE CONSTRUCTION AND OPERATION OF THE PRODUCT AND THE HAZARDS INVOLVED. SUITABLE FOR WET LOCATIONS. SUITABLE FOR GROUND-MOUNTED RECESSED ONLY. MIN 60°C SUPPLY CONDUCTORS.

CE PRODUIT DOIT ÊTRE INSTALLÉ SELON LE CODE D'INSTALLATION PERTINENT, PAR UNE PERSONNE QUI CONNAÎT BIEN LE PRODUIT ET SON FONCTIONNEMENT AINSI QUE LES RISQUES INHÉRENTS. CONVIENT AUX EMPLACEMENTS MOUILLÉS. PEUT ÊTRE ENCASTRÉ DANS LE SOL. LES FILS D'ALIMENTATION 60°C MIN.