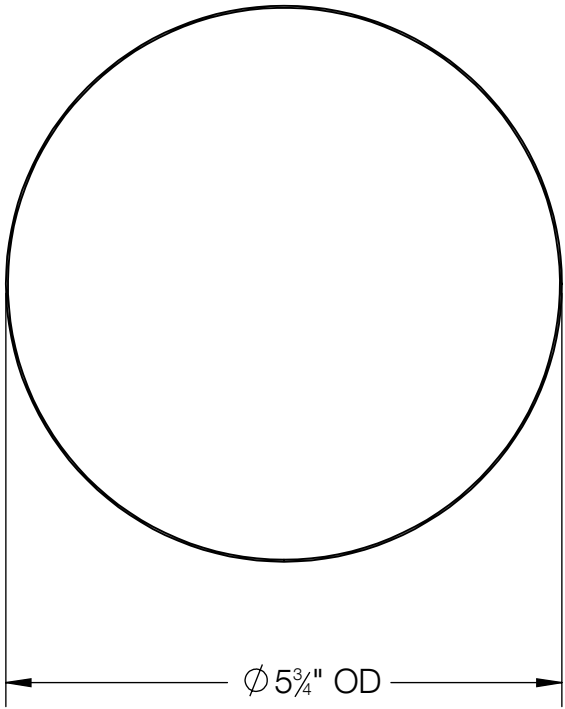
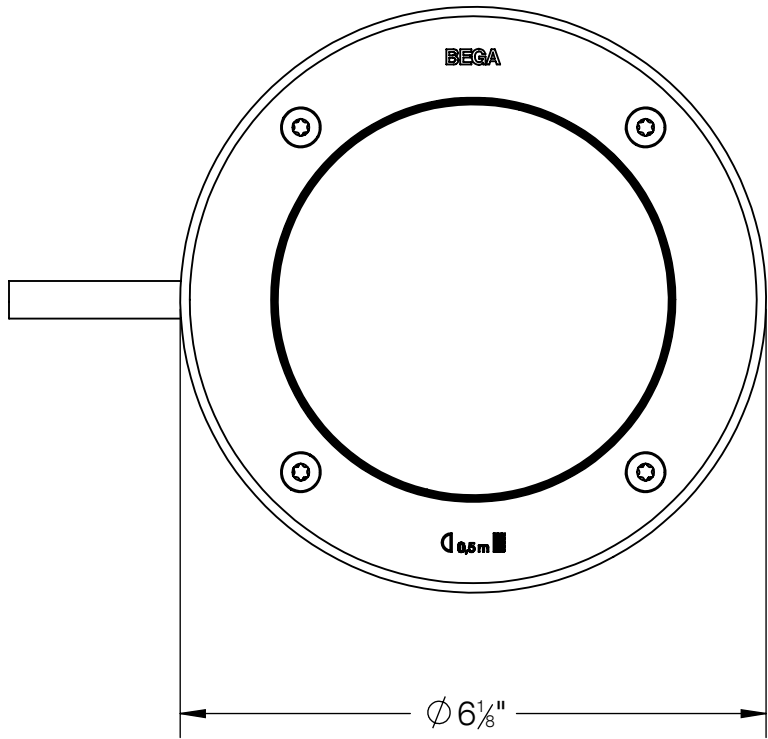
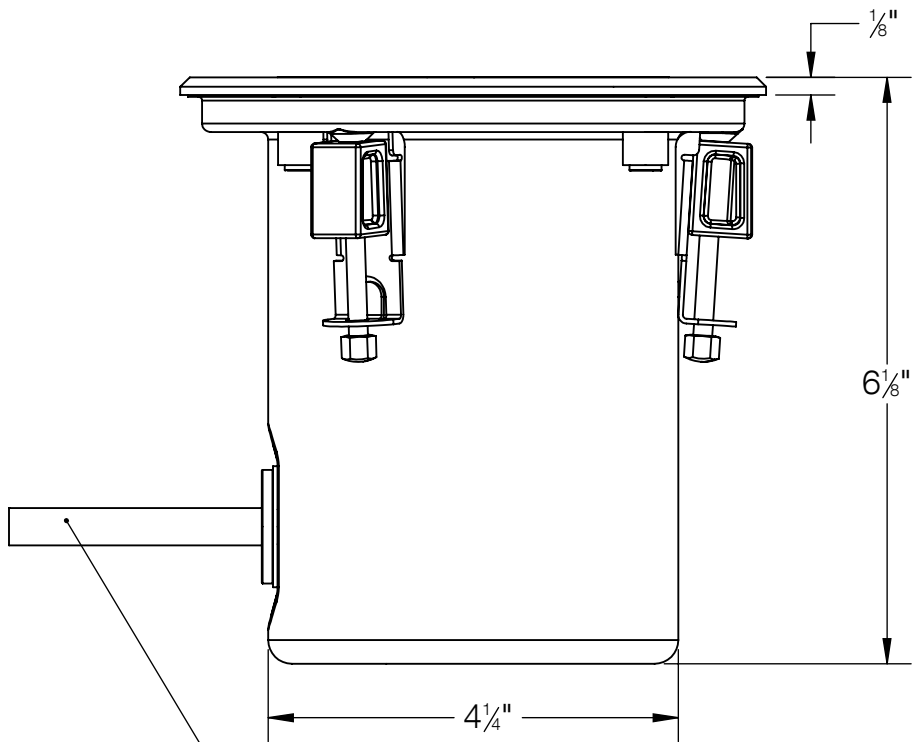
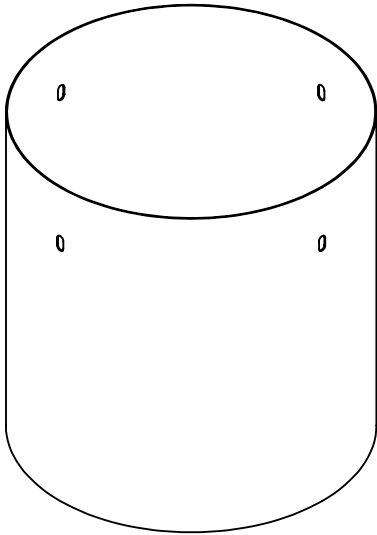
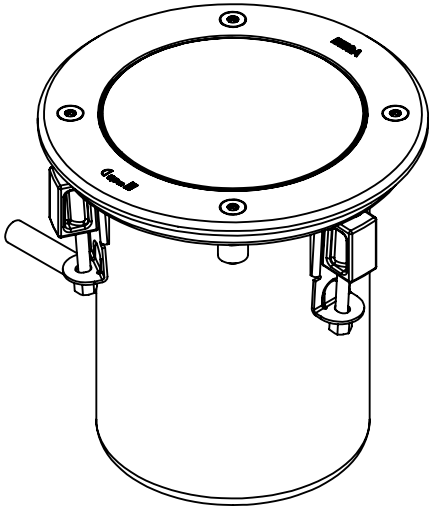


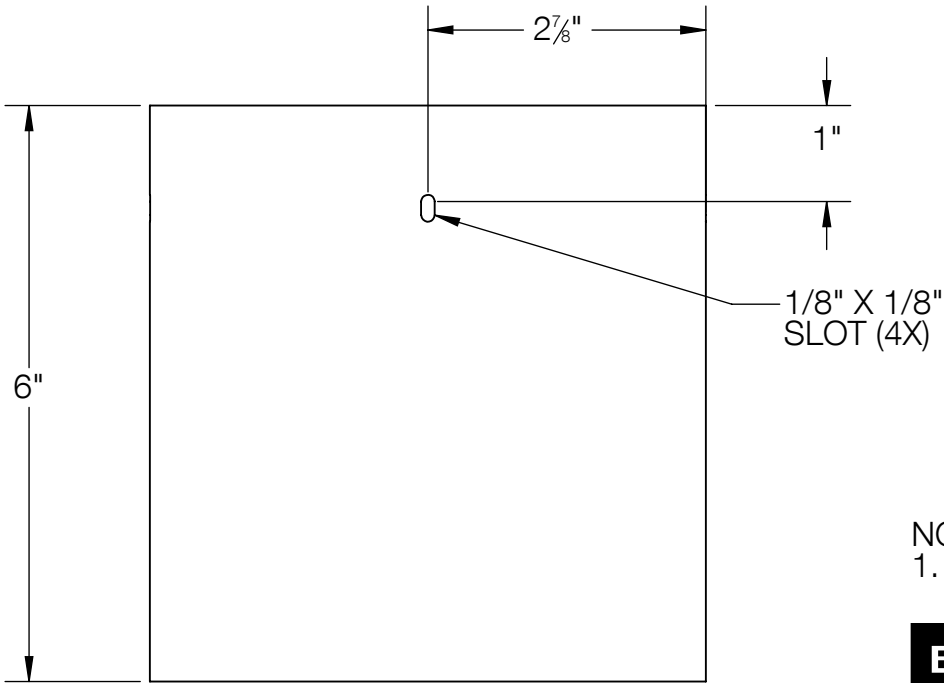
REV	CHANGED BY	DESCRIPTION	DATE



INSTALLATION SLEEVE PROVIDED

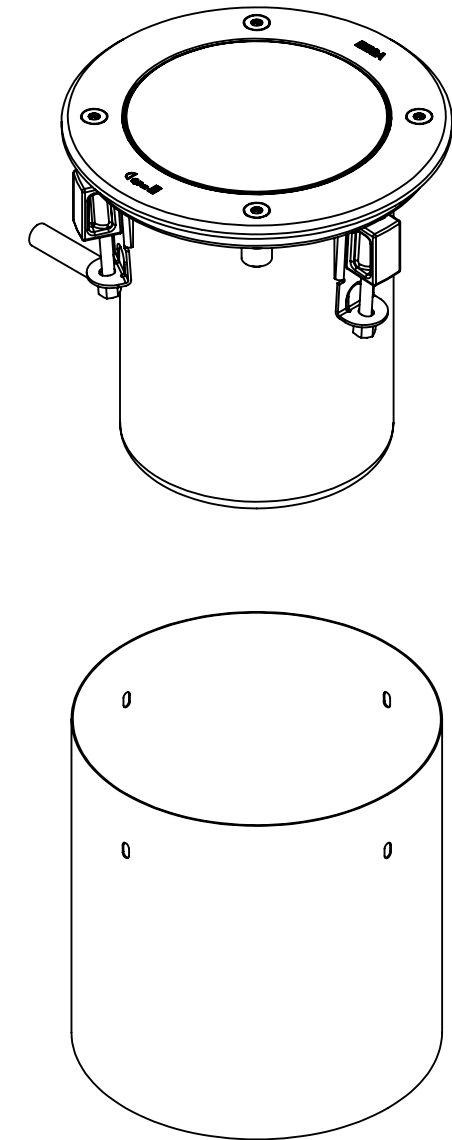
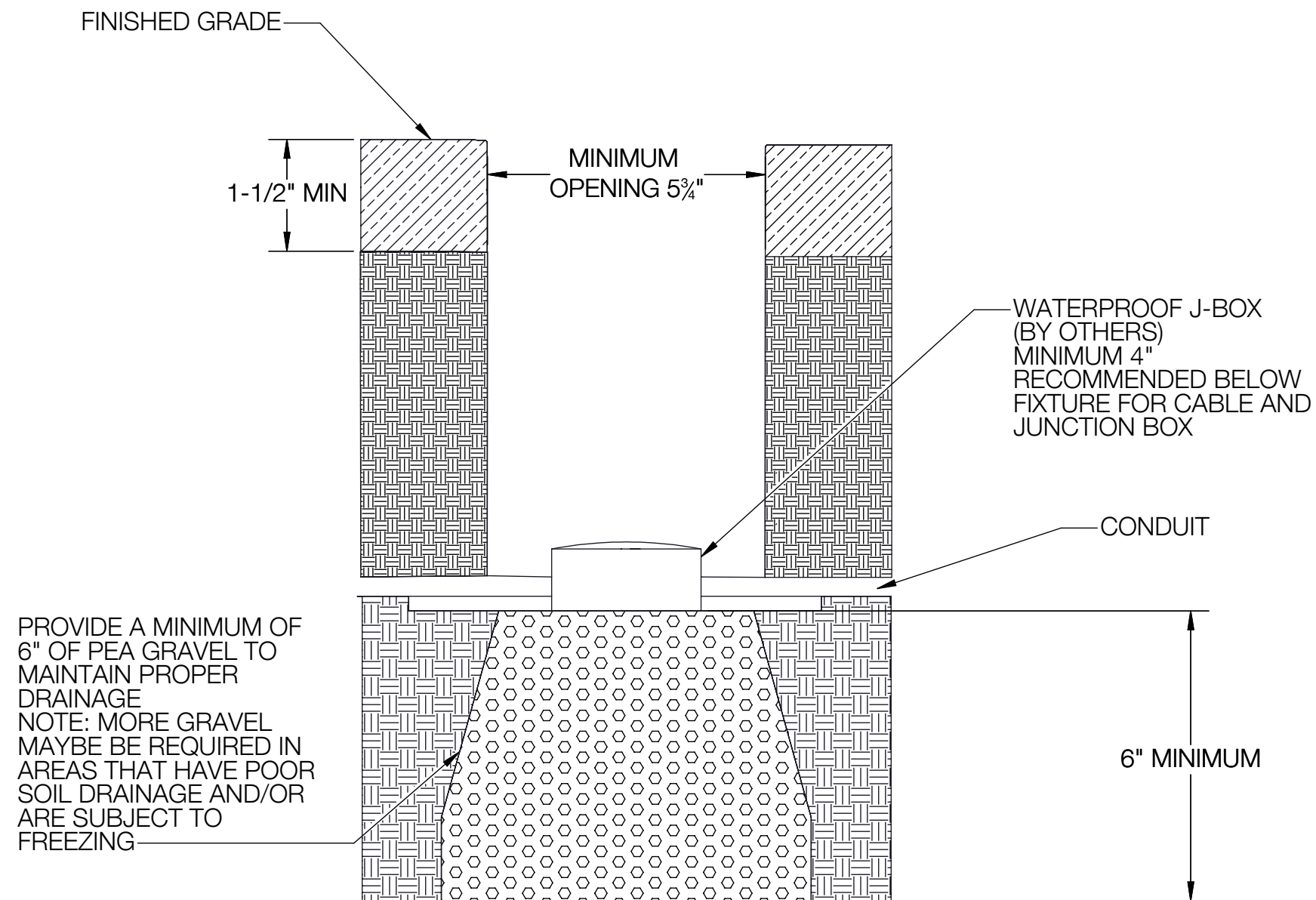


PROVIDED WITH 7.5' OF WATERPROOF CABLE



NOTE:  
1. INCLUDES KIT #40 - WATERPROOF CONNECTOR KIT

BEGA				
1000 BEGA Way, Carpinteria, California 93013			P (805) 684-0533 - www.bega-us.com	
APPROVED: _____		DATE: _____		DESCRIPTION:
TYPE: _____				INGRADE LUMINAIRE - SYMMETRIC
PROPRIETARY AND CONFIDENTIAL		SIZE	PART NO.	REV
THE INFORMATION CONTAINED IN THIS DRAWING IS THE SOLE PROPERTY OF BEGA NORTH AMERICA, INC. ANY REPRODUCTION IN PART OR AS A WHOLE WITHOUT THE WRITTEN PERMISSION OF BEGA NORTH AMERICA, INC. IS PROHIBITED.		B	77912	-
NOT TO SCALE		7/23/2024	SHEET 1 OF 2	



NOTE:  
1. INCLUDES KIT #40 - WATERPROOF CONNECTOR KIT

BEGA				
1000 BEGA Way, Carpinteria, California 93013			P (805) 684-0533 - www.bega-us.com	
APPROVED: _____ DATE: _____		DESCRIPTION:  INGRADE INSTALLATION		
TYPE: _____				
PROPRIETARY AND CONFIDENTIAL  THE INFORMATION CONTAINED IN THIS DRAWING IS THE SOLE PROPERTY OF BEGA NORTH AMERICA, INC.  ANY REPRODUCTION IN PART OR AS A WHOLE WITHOUT THE WRITTEN PERMISSION OF BEGA NORTH AMERICA, INC. IS PROHIBITED.		SIZE	PART NO.	REV
		B	77912	-
		NOT TO SCALE	7/23/2024	SHEET 2 OF 2