

Application

In-grade symmetric floodlight luminaires. The patented mounting system allows for installation in pre-cored holes such as stone, tile or decks. These luminaires are designed to bear pressure loads up to 4400 lbs. from vehicles with pneumatic tires. The luminaires must not be used for traffic lanes where they are subject to horizontal pressure from vehicles braking, accelerating and changing direction.

Materials

- Clear safety glass
- Corrosion-resistant 304 grade stainless steel
- High temperature silicone gasket
- Mechanically captive stainless steel fasteners
- Stainless steel screw clamps
- Fully potted waterstopper cable
- Pure anodized aluminum reflector

NRTL listed to North American Standards, suitable for wet locations
Protection class IP 68

Weight: 9.0 lbs.

Electrical

- Operating voltage120-277VAC
- Minimum start temperature-30° C
- LED module wattage13.9W
- System wattage17.0W
- Controllability0-10V, TRIAC, and ELV dimmable
- Color rendering indexRa > 80
- Luminaire lumens970lm
- LED service life (L70)60000hrs

LED color temperature

- 4000K (K4)
- 3500K (K35)
- 3000K (K3)
- 2700K (K27)

BEGA can supply you with suitable LED replacement modules for up to 20 years after the purchase of LED luminaires - see website for details

Finish

#4 brushed stainless steel. Custom colors are not available.

Type:

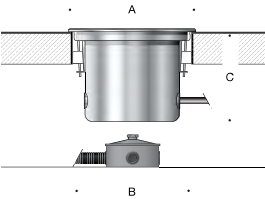
BEGA Product:

Project:

Modified:

Available options

- FSCFusing
- NSLNon-skid lens



In-grade luminaire · Symmetric

	LED	β	A	B	C
B77914	13.9W	18°	9 ⁵ / ₈	8 ⁷ / ₈	7 ¹ / ₄

