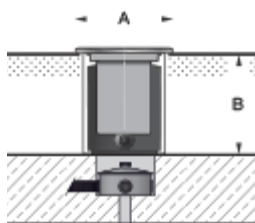


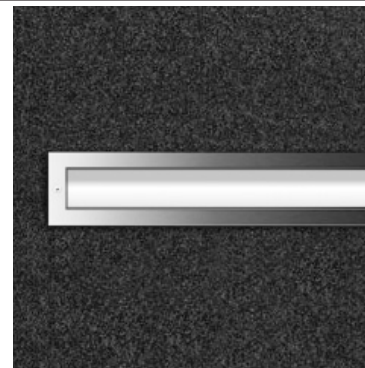
**Tools Required:**

4mm hex key  
Phillips medium screwdriver



**Dimensions**

A: 39-3/8 x 3-1/2"  
B: 5"



**Protection Class:** IP67

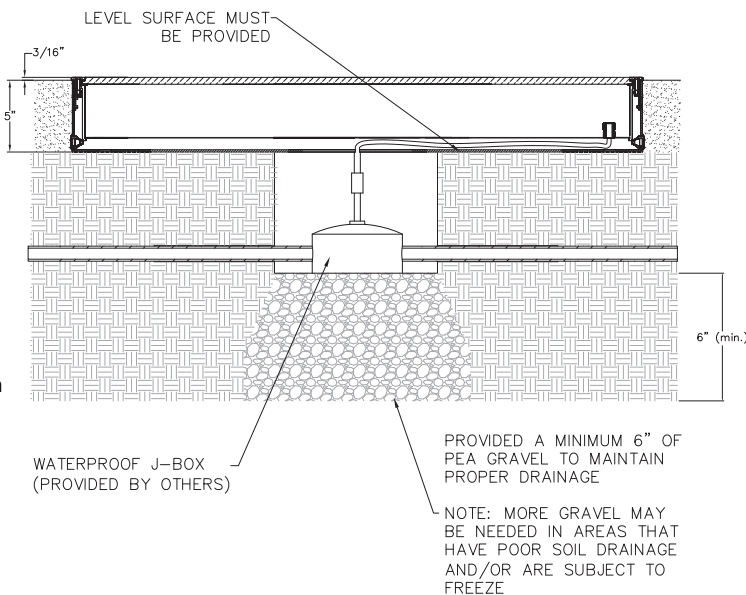
**Weight:** 29.8 lbs.

**Notice to Installer for 77 918:**

1. See page 2 for specific product safety warnings.
2. **BEGA luminaires may be damaged if connected to conduit systems containing water - Article 300-5G of National Electric Code requires that "Conduits or raceways through which moisture may contact energized live parts shall be sealed or plugged at either or both ends".**
3. A separate wiring box suitable for outdoor locations (Bell #5320-0 or equivalent) for power supply must be provided (by others).
4. Proper drainage **MUST** be provided for wiring box and fixture housing.
5. For proper installation, housing and finished surface must be installed so that the top of the housing (bottom of faceplate) sits flush or slightly above the finished surface.
6. Must be anchored to a grade medium (1-1/2" minimum depth) which is suitable for vehicular and pedestrian loads.
7. Integral LED driver supplied.
8. LED module supplied.

**77 918 - installation:**

1. Loosen the (2) 4mm hex screws on faceplate in order to remove inner housing from outer housing. Remove inner housing.
2. Establish location of wiring box. (These luminaires are pre-wired with (9) feet of waterproof cable, factory sealed to the luminaire housing.) Make sure that enough cable is left to lift the inner housing out of the outer housing for luminaire maintenance. Provide proper drainage.
3. Establish foundation for anchorage. Use (2) 5/16" holes provided in outer housing base to anchor outer housing to suitable foundation (1/4" anchor bolts recommended, by others). The top edge of outer housing must be flush or slightly above finished surface. Use grout, nuts, and washers for leveling. Finish surface.
4. Make supply wiring and cable connections inside wiring box:  
MAIN VOLTAGE SUPPLY WIRE TO BLACK LUMINAIRE WIRE;  
NEUTRAL (COMMON) SUPPLY WIRE TO WHITE LUMINAIRE WIRE;  
GREEN (GROUND) WIRE TO GREEN LUMINAIRE WIRE  
Dimming (if applicable):  
DIMMING CONTROL WIRE (+) TO POSITIVE DRIVER DIM CONTROL WIRE  
DIMMING CONTROL WIRE (-) TO NEGATIVE DRIVER DIM CONTROL WIRE
5. Replace inner housing into outer [recessed] housing. Tighten (2) faceplate screws to secure housing.



**Relamping/Maintenance**

NO relamping necessary.

**Accessories**

Please refer to the appropriate accessory installation sheet for further instruction when applicable.

**Replacement Parts**

Description	Part No
Lens	140738
Lens gasket	83001741
LED driver (120-277V)	75989-3
LED module (3000K) (2x)	LED-0351/830
LED module (4000K) (2x)	LED-0351/840

**Lamp:** 39.6W LED

---

**Product Safety Warnings:**

**THIS PRODUCT MUST BE INSTALLED IN ACCORDANCE WITH THE APPLICABLE INSTALLATION CODE BY A PERSON FAMILIAR WITH THE CONSTRUCTION AND OPERATION OF THE PRODUCT AND THE HAZARDS INVOLVED. SUITABLE FOR WET LOCATIONS.**

**MIN 90°C SUPPLY CONDUCTORS.**

**CE PRODUIT DOIT ÊTRE INSTALLÉ SELON LE CODE D'INSTALLATION PERTINENT, PAR UNE PERSONNE QUI CONNAÎT BIEN LE PRODUIT ET SON FONCTIONNEMENT AINSI QUE LES RISQUES INHÉRENTS. CONVIENT AUX EMPLACEMENTS MOUILLÉS.**

**LES FILS D'ALIMENTATION 90°C MIN.**

---