

Tools Required:

- 4mm hex key
- Drill
- 1/2" Nut Driver



Dimensions

- A: 6-1/4"
- B: 14-3/4"



Protection Class: IP 65

Weight: 7.1 lbs

Notice to Installer for 84 000:

- See page 2 for specific product safety warnings.
- Fixture may be damaged if connected to conduit systems that contain water - Article 300-5G of the National Electric Code requires that "Conduits or raceways through which moisture may contact energized live parts shall be sealed or plugged at either or both ends."
- For proper installation, an accompanying bollard head must be selected with the bollard tube.
- 79 817 anchorage kit (included) must be installed in concrete pad/foundation.
- It is recommended that when installing in planting areas the bollard base be slightly elevated to avoid prolonged submerging during heavy rains.
- Wet location listing does not imply suitability for exposure to standing water for long periods of time.
- LEDs are high-quality electronic components! Please avoid touching the light output opening of the LED directly during installation.

79817 anchorage installation for 84000:

- Provide means to bring supply wiring to the bollard in accordance with local code. See Figure 1 for size the of the conduit entry opening.
  - Assemble the anchorage kit. Unscrew the (3) base plates bolts from the female couplers and remove each bolt and washer. Align each anchor bolt with the hole in the template. Attach each anchor bolt to the template by replacing the washer and base plate bolt and tightening. Do not remove nuts and washers from bottom of anchor bolt; this provides the pullout force. See Figure 2.
  - Install anchorage kit using either method:
    - Attach template to forming or cross bracing using the (2) nail holes provided in the template. Level template properly. Pour concrete.
    - Insert anchorage assembly into poured concrete. Concrete must be vibrated to ensure proper anchorage setting. Level template properly.
- NOTE: Allow adequate time for concrete to cure properly.
- Remove (3) hex base plate bolts and washers once anchorage is set.
  - Remove template. Smooth concrete pad as required.

84 000 installation:

- Remove (3) hex bolts and washers, once anchorage is set.
  - Leave template in place to provide a smooth, flat surface to mount the base.
  - Turn the base plate and remove from bollard , after loosening the 4mm set screw.
  - Bolt the base plate to the anchorage kit using the (3) hex bolts and washers.
  - Bring supply wiring into internal wiring box (provided) for connections to be made to the female 5-pin connector.
    - MAIN VOLTAGE SUPPLY WIRE TO BLACK 5-PIN CONNECTOR WIRE;
    - NEUTRAL (COMMON) SUPPLY WIRE TO WHITE 5-PIN CONNECTOR WIRE;
    - GREEN GROUND WIRE TO GREEN 5-PIN CONNECTOR WIRE.
- Dimming (if applicable):
- DIMMING CONTROL WIRE (+) TO POSITIVE 5-PIN CONNECTOR
  - DIM CONTROL WIRE
  - DIMMING CONTROL WIRE (-) TO NEGATIVE 5-PIN CONNECTOR
  - DIM CONTROL WIRE
- Place the bollard over the base plate so that the (3) notches in the base plate align with the top.
  - Secure the bollard by tightening the 4mm set screw at the base.
  - Install bollard head per bollard head installation instructions.

Figure 1:

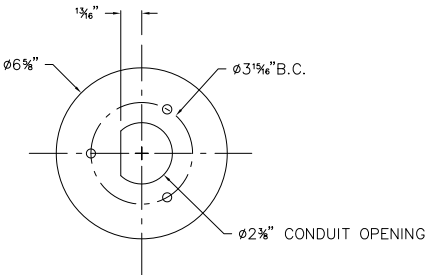
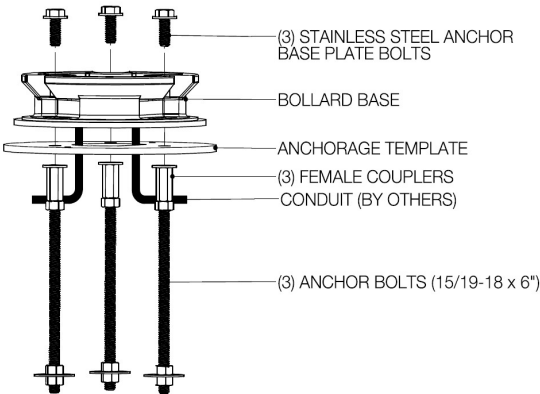


Figure 2:



Relamping/Maintenance

No relamping required.

Accessories

Please refer to the appropriate accessory installation sheet for further instruction when applicable.

Replacement Parts

DescriptionPart No

Anchorage79 817

In the interest of product improvement, BEGA reserves the right to make technical changes without notice.

## Product Safety Warnings:

**THIS PRODUCT MUST BE INSTALLED IN ACCORDANCE WITH THE APPLICABLE INSTALLATION CODE BY A PERSON FAMILIAR WITH THE CONSTRUCTION AND OPERATION OF THE PRODUCT AND THE HAZARDS INVOLVED. SUITABLE FOR WET LOCATIONS.**

**MIN 90°C SUPPLY CONDUCTORS.**

**CE PRODUIT DOIT ÊTRE INSTALLÉ SELON LE CODE D'INSTALLATION PERTINENT, PAR UNE PERSONNE QUI CONNAÎT BIEN LE PRODUIT ET SON FONCTIONNEMENT AINSI QUE LES RISQUES INHÉRENTS. CONVIENT AUX EMPLACEMENTS MOUILLÉS.**

**LES FILS D'ALIMENTATION 90°C MIN.**