

Tools Required:

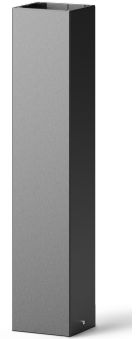
4mm hex key



Dimensions

A: 8-5/8 "

B: 14-3/4 "



Protection Class: IP 65

Weight: 13.7 lbs

Notice to Installer for 84 001:

1. See page 2 for specific product safety warnings.
2. Fixture may be damaged if connected to conduit systems that contain water - Article 300-5G of the National Electric Code requires that "Conduits or raceways through which moisture may contact energized live parts shall be sealed or plugged at either or both ends."
3. For proper installation, an accompanying bollard head must be selected with the bollard tube.
4. 79 818 anchorage kit (included) must be installed in concrete pad/foundation.
5. It is recommended that when installing in planting areas the bollard base be slightly elevated to avoid prolonged submerging during heavy rains.
6. Wet location listing does not imply suitability for exposure to standing water for long periods of time.
7. LEDs are high-quality electronic components! Please avoid touching the light output opening of the LED directly during installation.

79 818 anchorage installation:

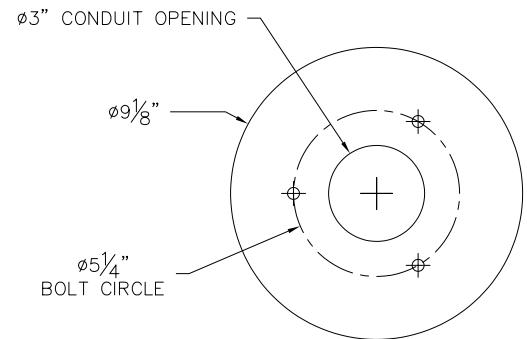
1. Provide means to bring supply wiring to the bollard in accordance with local code and pour concrete for finished grade. The bollard base has a 3" conduit hole for conduit entry.
 2. Assemble anchorage kit. Unscrew the (3) hex bolts from the female couplers. Remove each hex bolt and washer. Align each anchor bolt with the hole in the template. Attach each anchor bolt to the template by replacing the washer and hex bolt and tightening.
 3. Determine the finished grade for the application. Use leveling hardware to adjust template to desired finished height after pouring
 4. Install anchorage kit using either method:
 - A. Attach template to forming or cross bracing using the (2) nail holes provided in the template. Level template properly. Pour concrete.
 - B. Insert anchorage assembly into poured concrete. Concrete must be vibrated to ensure proper anchorage setting. Level template properly.
 5. Remove (3) hex bolts and washers once anchorage is set.
 6. Remove template. Smooth concrete pad as required.
- NOTE: Allow adequate time for concrete to cure properly

84 001 installation:

1. Remove (3) hex bolts and washers, once anchorage is set.
2. Leave template in place to provide a smooth, flat surface to mount the base.
3. Turn the base plate and remove from bollard, after loosening the 4mm set screw.
4. Align base plate holes with anchorage holes.
5. Bolt the base plate to the anchorage kit using the (3) hex bolts and washers.
6. Bring supply wiring into bollard tube for connections to be made to the female 5-pin connector.

MAIN VOLTAGE SUPPLY WIRE TO BLACK 5-PIN CONNECTOR WIRE;
NEUTRAL (COMMON) SUPPLY WIRE TO WHITE 5-PIN CONNECTOR WIRE;
GREEN GROUND WIRE TO GREEN 5-PIN CONNECTOR WIRE.

Dimming (if applicable):
DIMMING CONTROL WIRE (+) TO POSITIVE 5-PIN CONNECTOR
DIM CONTROL WIRE
DIMMING CONTROL WIRE (-) TO NEGATIVE 5-PIN CONNECTOR
DIM CONTROL WIRE
7. Place the bollard over the base plate so that the (3) notches in the base plate align with the top. Lock bollard into place with a quarter turn.
8. Secure the bollard by tightening the 4mm set screw at the base.
9. Install bollard head per bollard head installation instructions.



79_818 ANCHOR TEMPLATE

Figure 1: Anchorage Template

Relamping/Maintenance

No relamping required.

Accessories

Please refer to the appropriate accessory installation sheet for further instruction when applicable.

Replacement Parts

Description Part No

Anchorage 79 818

Product Safety Warnings:

THIS PRODUCT MUST BE INSTALLED IN ACCORDANCE WITH THE APPLICABLE INSTALLATION CODE BY A PERSON FAMILIAR WITH THE CONSTRUCTION AND OPERATION OF THE PRODUCT AND THE HAZARDS INVOLVED. SUITABLE FOR WET LOCATIONS.

MIN 90°C SUPPLY CONDUCTORS.

CE PRODUIT DOIT ÊTRE INSTALLÉ SELON LE CODE D'INSTALLATION PERTINENT, PAR UNE PERSONNE QUI CONNAÎT BIEN LE PRODUIT ET SON FONCTIONNEMENT AINSI QUE LES RISQUES INHÉRENTS. CONVIENT AUX EMPLACEMENTS MOUILLÉS.

LES FILS D'ALIMENTATION 90°C MIN.
