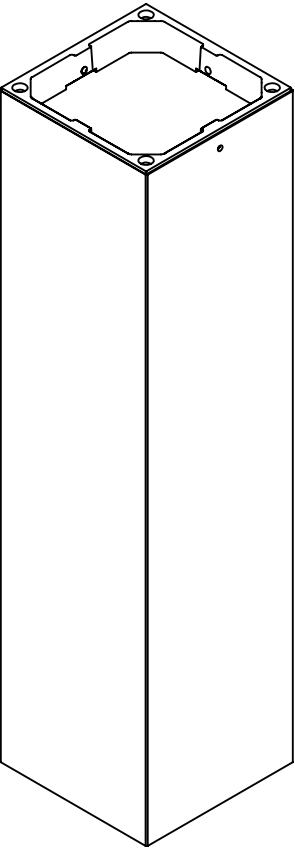
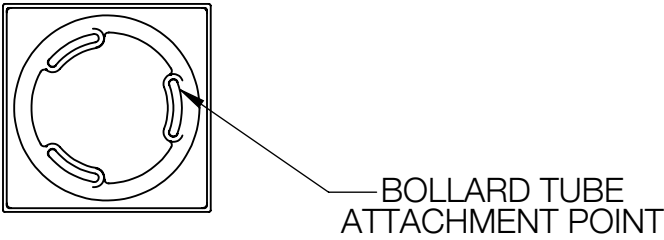
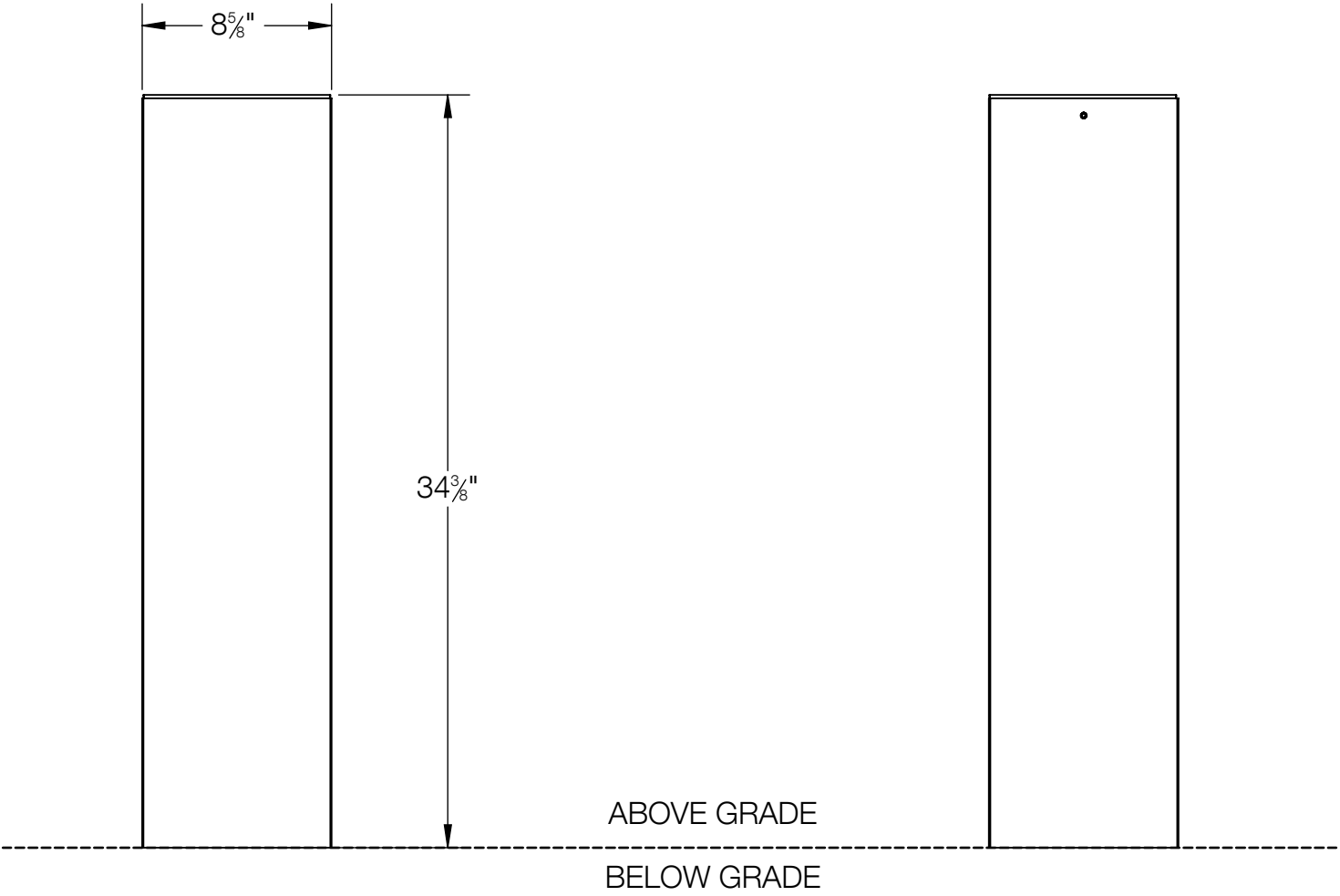


REV	CHANGED BY	DESCRIPTION	DATE



- NOTES:
- 1. INCLUDES B96086 (ANCHORAGE UNIT).
 - 2. INCLUDES 01516 (CONCRETE POURING INSTRUCTIONS). SEE INSTALLATION INSTRUCTIONS. CONSULT STRUCTURAL ENGINEER FOR FOUNDATION DETAILS.
 - 3. INCLUDES WEATHERPROOF CONNECTION BOX TO MAKE WIRING CONNECTIONS.
 - 4. FOR USE WITH SYSTEM BOLLARD HEADS MEASURING 8 5/8" SQUARE.

BEGA				
1000 BEGA Way, Carpinteria, California 93013			P (805) 684-0533 - www.bega-us.com	
APPROVED: _____		DATE: _____		DESCRIPTION: BOLLARD TUBE
TYPE: _____				
PROPRIETARY AND CONFIDENTIAL THE INFORMATION CONTAINED IN THIS DRAWING IS THE SOLE PROPERTY OF BEGA NORTH AMERICA, INC. ANY REPRODUCTION IN PART OR AS A WHOLE WITHOUT THE WRITTEN PERMISSION OF BEGA NORTH AMERICA, INC. IS PROHIBITED.		SIZE B	PART NO. 84016	REV -
		NOT TO SCALE	06/29/2022	SHEET 1 OF 3

Technical drawing of a bollard tube assembly. The drawing includes a side view on the left and an end view at the bottom left. A horizontal dashed line indicates the grade level.

Side View Dimensions:

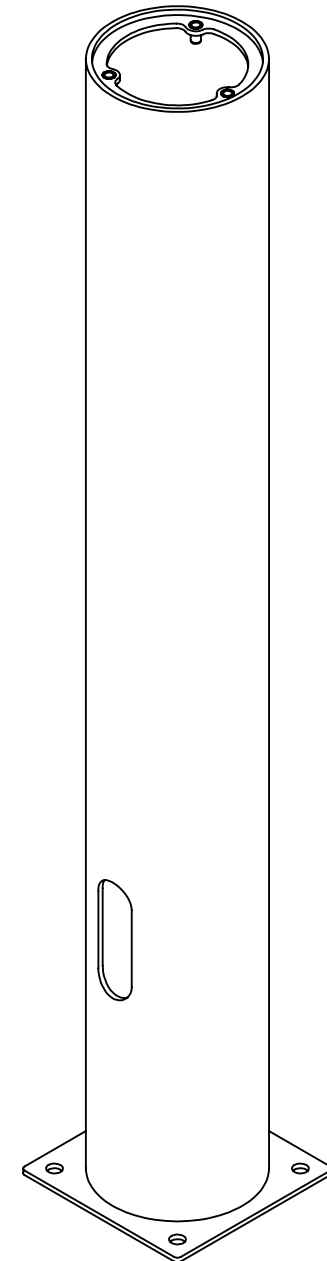
- Top diameter: $\phi 7\frac{5}{8}"$
- Height above grade: $25\frac{3}{8}" (+/- 0.5")$
- Height below grade: $31\frac{1}{2}"$
- Bottom width: $9\frac{1}{4}"$
- Internal hole width: $2"$
- Internal hole height: $5\frac{7}{8}"$
- Distance from bottom to internal hole: $10\frac{7}{8}"$

End View Dimensions:

- Outer diameter: $\phi 3\frac{3}{4}"$
- Inner diameter: $7\frac{1}{4}"$

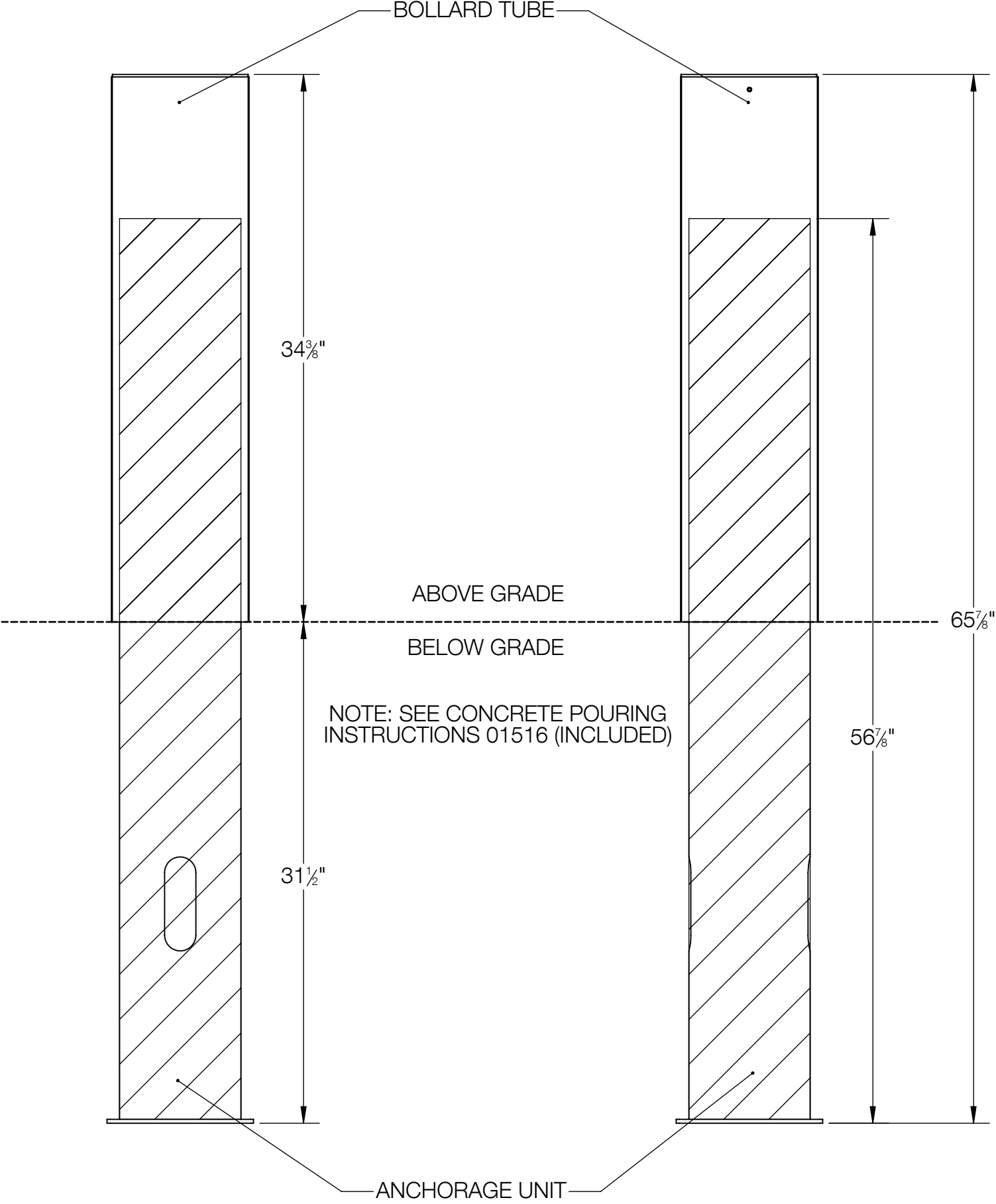
Labels:

- BOLLARD TUBE ON THE ANCHORAGE UNIT.
- ABOVE GRADE
- BELOW GRADE

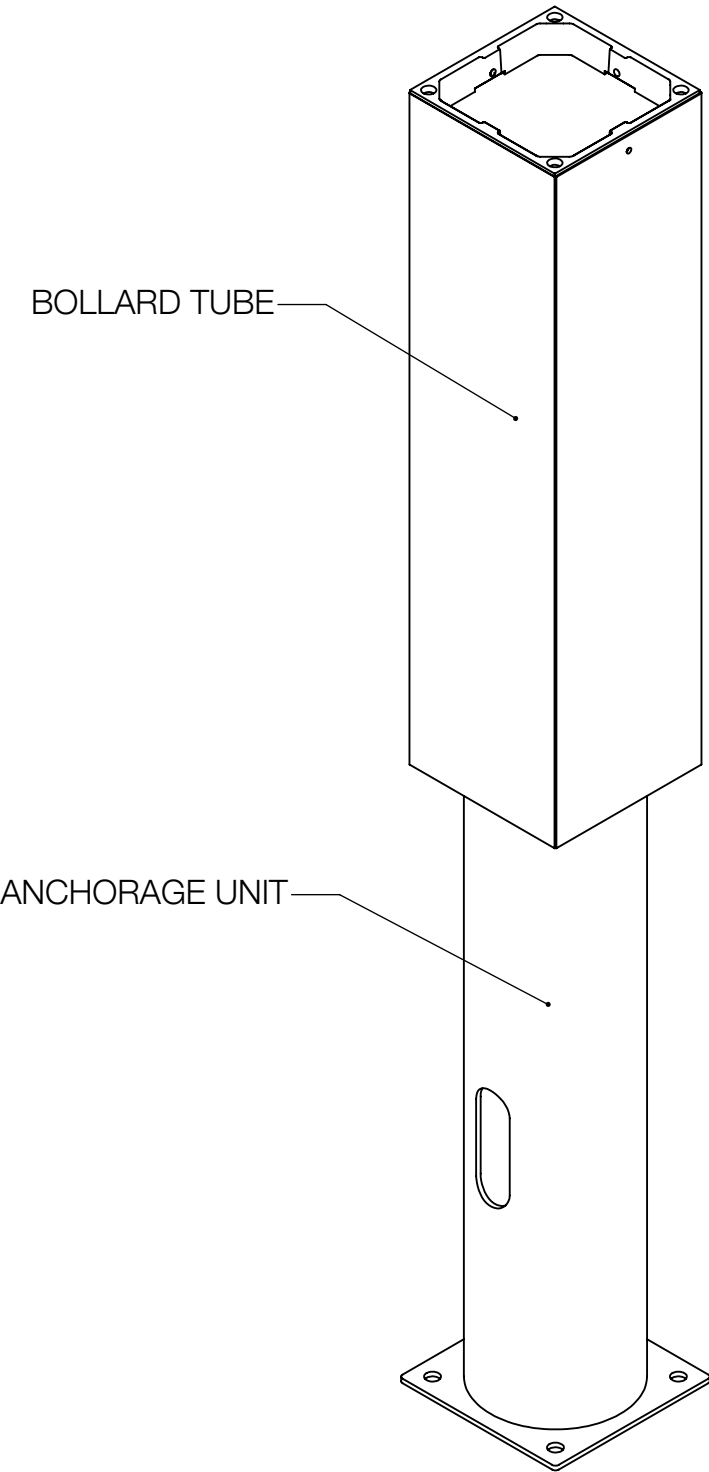


REV	CHANGED BY	DESCRIPTION	DATE

BEGA				
1000 BEGA Way, Carpinteria, California 93013			P (805) 684-0533 - www.bega-us.com	
APPROVED: _____ DATE: _____		DESCRIPTION: ANCHORAGE UNIT		
TYPE: _____				
PROPRIETARY AND CONFIDENTIAL THE INFORMATION CONTAINED IN THIS DRAWING IS THE SOLE PROPERTY OF BEGA NORTH AMERICA, INC. ANY REPRODUCTION IN PART OR AS A WHOLE WITHOUT THE WRITTEN PERMISSION OF BEGA NORTH AMERICA, INC. IS PROHIBITED.		SIZE B	PART NO. B96086	REV -
		NOT TO SCALE	06/29/2022	SHEET 2 OF 3



REV	CHANGED BY	DESCRIPTION	DATE



BEGA

1000 BEGA Way, Carpinteria, California 93013 P (805) 684-0533 - www.bega-us.com

APPROVED: _____ DATE: _____ DESCRIPTION: IMPACT BOLLARD TUBE + ANCHORAGE UNIT
TYPE: _____

PROPRIETARY AND CONFIDENTIAL THE INFORMATION CONTAINED IN THIS DRAWING IS THE SOLE PROPERTY OF BEGA NORTH AMERICA, INC. ANY REPRODUCTION IN PART OR AS A WHOLE WITHOUT THE WRITTEN PERMISSION OF BEGA NORTH AMERICA, INC. IS PROHIBITED.	SIZE	PART NO.	REV
	B	84016 + B96086	-
NOT TO SCALE		06/29/2022	SHEET 3 OF 3