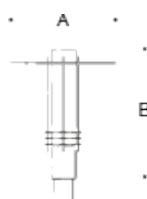


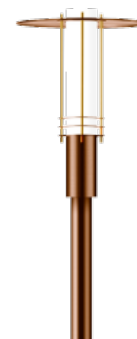
**Tools Required:**

3mm hex key  
5mm hex key  
Phillips medium screwdriver


**Dimensions**

**A:** 13-7/8 "

**B:** 16-1/8 "



**Protection Class:** IP65

**Weight:** 8.8 lbs.

**Notice to Installer for 84 045:**

1. For pole top applications only.
2. Slip fits BOOM poles 70 552, 70 550, 70 553, and 70 551.
3. Pole top luminaires supplied with 10' of cable to route through pole.
4. See page 2 for specific product safety warnings.
5. This product must be installed in accordance with the applicable installation code by a person familiar with the construction and operation of the product and the hazards involved.

**NOTE:** LEDs are high-quality electronic components! Please avoid touching them directly during installation.

**NOTE:** To avoid fingerprints on the luminaire use enclosed protective gloves during installation. The luminaire parts made of solid copper are delivered with the metal's natural surface color. Time and weather factors create the natural patina characteristic for copper.

**84 045 - Installation:**

1. Undo cap nuts at base of pole and pull out the mounting plate.
2. Fix mounting plate onto prepared foundation or onto anchorage kit.
3. Place luminaire on pole and fix with set screws.
4. Make supply wiring connections:  
MAIN VOLTAGE SUPPLY WIRE TO BLACK LUMINAIRE WIRE  
NEUTRAL (COMMON) SUPPLY WIRE TO WHITE LUMINAIRE WIRE  
GREEN GROUND WIRE TO GREEN LUMINAIRE WIRE

**Dimming (if applicable):**

- DIMMING CONTROL WIRE (+) TO POSITIVE DRIVER DIM CONTROL WIRE
- DIMMING CONTROL WIRE (-) TO NEGATIVE DRIVER DIM CONTROL WIRE
5. Install luminaire with pole on the mounting plate and tighten with nuts.
6. Replace cap nuts at luminaire base and fix luminaire decorative top plate to the luminaire base.
7. Screw glass with gasket into luminaire housing, ensuring the gasket is seated properly.

**Relamping/Maintenance**

No relamping necessary.

**Accessories**

Please refer to the appropriate accessory installation sheet for further instruction when applicable.

**Replacement Parts**

Description	Part No
Glass	11253941
Gasket	830672
LED Module (3000K)	(x2) LED-0253/830
LED Driver (120-277V)	76023

**Lamp:** 6.4W LED

**Product Safety Warnings:**

**THIS PRODUCT MUST BE INSTALLED IN ACCORDANCE WITH THE APPLICABLE INSTALLATION CODE BY A PERSON FAMILIAR WITH THE CONSTRUCTION AND OPERATION OF THE PRODUCT AND THE HAZARDS INVOLVED. SUITABLE FOR WET LOCATIONS.**

**MIN 90°C SUPPLY CONDUCTORS.**

**CE PRODUIT DOIT ÊTRE INSTALLÉ SELON LE CODE D'INSTALLATION PERTINENT, PAR UNE PERSONNE QUI CONNAÎT BIEN LE PRODUIT ET SON FONCTIONNEMENT AINSI QUE LES RISQUES INHÉRENTS. CONVIENT AUX EMPLACEMENTS MOUILLÉS.**

**LES FILS D'ALIMENTATION 90°C MIN.**

---