

Application

In-grade floodlight, ideal for accenting small trees, shrubs, or other landscape features in private gardens. These luminaires are resistant to foot traffic for installation in flower beds, lawns, or gravel. Not to be installed in concrete or near vehicular traffic. Low voltage magnetic transformer is required for operation.

Materials

- Clear safety glass
- Composite housing
- Corrosion-resistant 304 grade stainless steel
- Fully potted waterstopper cable
- Pure anodized aluminum reflector surface

NRTL listed to North American Standards, suitable for wet locations  
Protection class IP 67

Weight: 2.65 lbs.

Electrical

- Operating voltage 12VAC
- Minimum start temperature -40° C
- Maximum ambient temperature 25° C
- LED module wattage 4.2W
- System wattage 5.42W
- Controllability Non-Dimming
- Color rendering index Ra > 80
- Luminaire lumens 589lm
- LED service life (L70) 60000hrs

LED color temperature

- 4000K (K4)
- 3500K (K35)
- 3000K (K3)
- 2700K (K27)

BEGA can supply you with suitable LED replacement modules for up to 20 years after the purchase of LED luminaires - see website for details

Finish

#4 brushed stainless steel. Custom colors are not available.

Type:

BEGA Product:

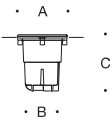
Project:

Modified:

Available accessories

B536 Low voltage magnetic transformer · 300W

See individual accessory spec sheet for details.



Garden in-grade luminaire · Symmetric · 12V AC

	LED	A	B	C
B84085	4.2 W	5 <sup>5</sup> / <sub>8</sub>	4	6 <sup>7</sup> / <sub>8</sub>

