

**Application**  
A pole-top luminaire with asymmetric, Type IV distribution. Ideal for illuminating pathways, plazas and other pedestrian spaces while adding visual interest.

**Materials**  
Clear UV-stabilized acrylic diffuser  
A380 aluminum alloy  
316 grade stainless steel  
High temperature silicone gasket  
Integral surge protector  
Pure anodized aluminum reflector

**NRTL** listed to North American Standards, suitable for wet locations  
Protection class IP 65

**Weight:** 22.0lbs.

**EPA (Effective projection area):** 1.93 sq. ft.

**Electrical**  
Operating voltage                    120-277VAC  
Minimum start temperature       -20° C  
LED module wattage                47.7 W  
System wattage                      54.0W  
Controllability                      0-10V dimmable  
Color rendering index              Ra > 80  
Luminaire lumens                    6392lm  
LED service life (L70)              60000hrs

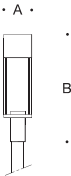
**LED color temperature**  
4000K (K4)  
3500K (K35)  
3000K (K3)  
2700K (K27)

**BEGA** can supply you with suitable LED replacement modules for up to 20 years after the purchase of LED luminaires - see website for details

**Finish**  
All BEGA standard finishes are matte, textured powder coat with minimum 3 mil thickness. BEGA Unidure® finish provides superior fade protection in Black, Bronze, and Silver. BEGA standard White is a super durable polyester powder. Optionally available RAL, custom, and premium colors provided in polyester powder and/or liquid paint.

Type:  
BEGA Product:  
Project:  
Modified:

- Available options**
- |     |                        |
|-----|------------------------|
| CUS | Custom finish          |
| FSC | Fusing                 |
| MGU | Marine grade undercoat |
| RAL | RAL finish             |



Pole-top luminaire · Asymmetric wide beam			
	LED	A	B
B84102	47.7 W	8 <sup>5</sup> / <sub>8</sub>	34 <sup>1</sup> / <sub>2</sub>

