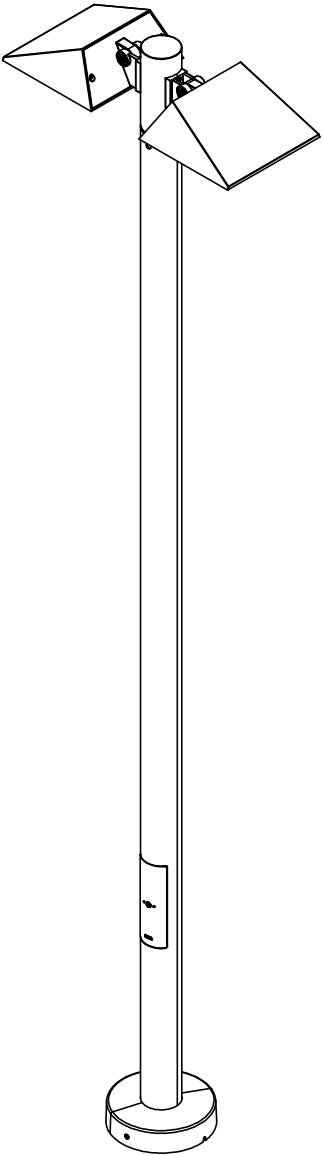
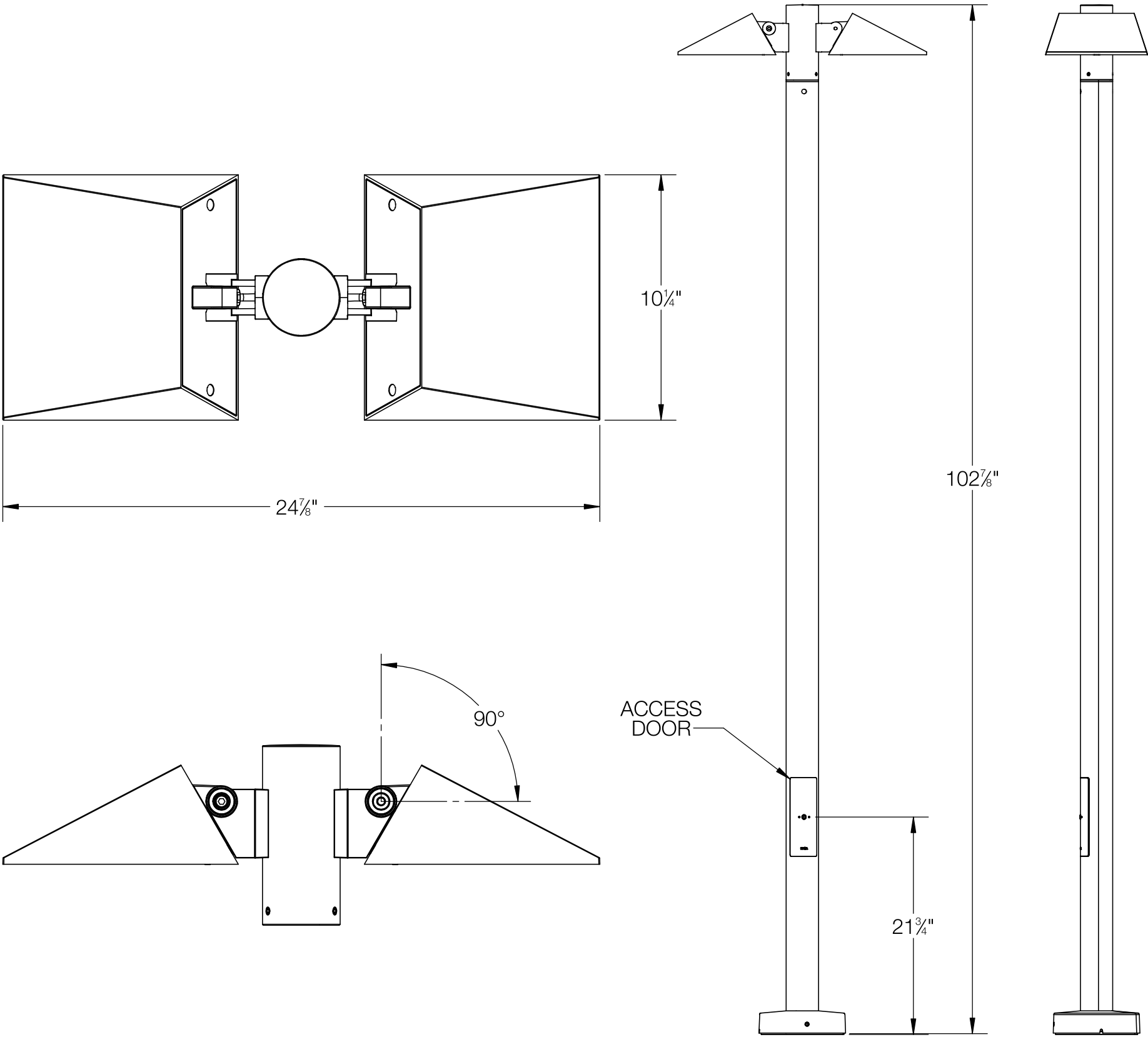


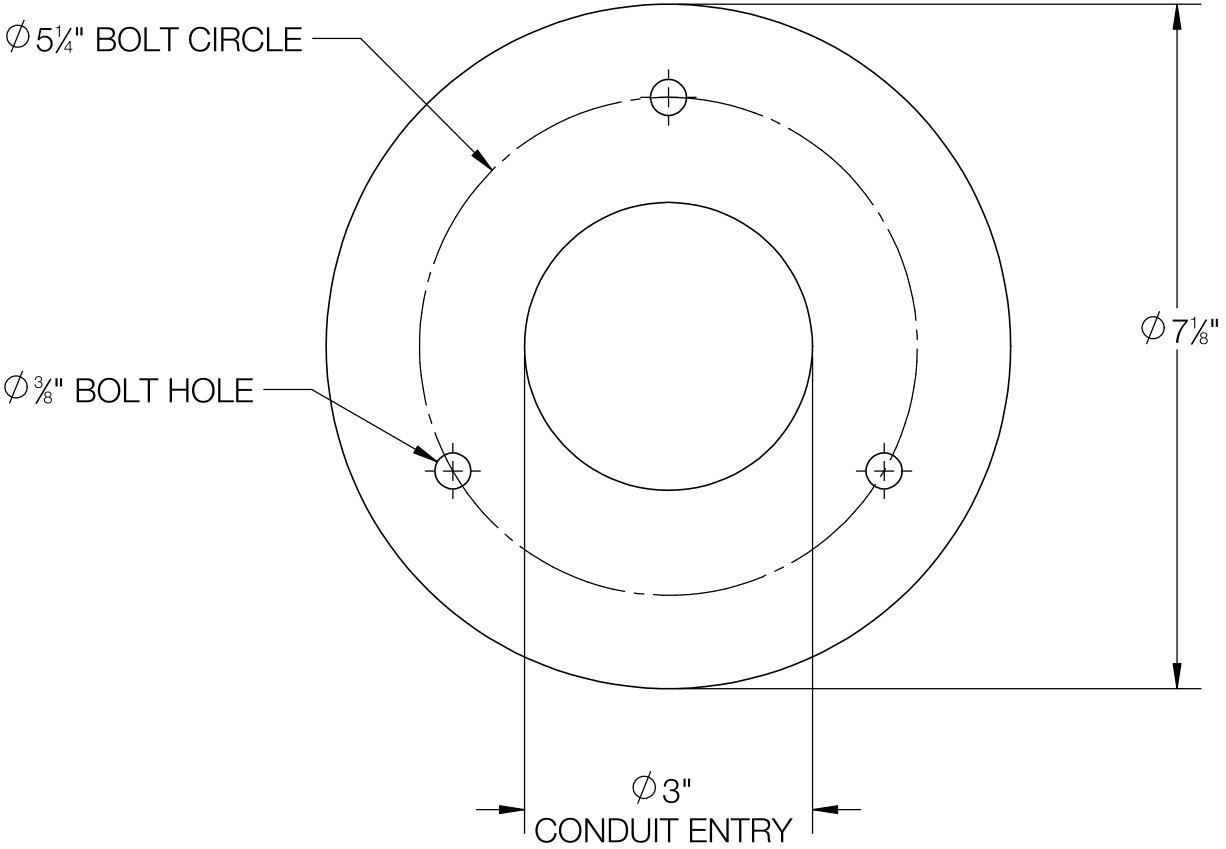
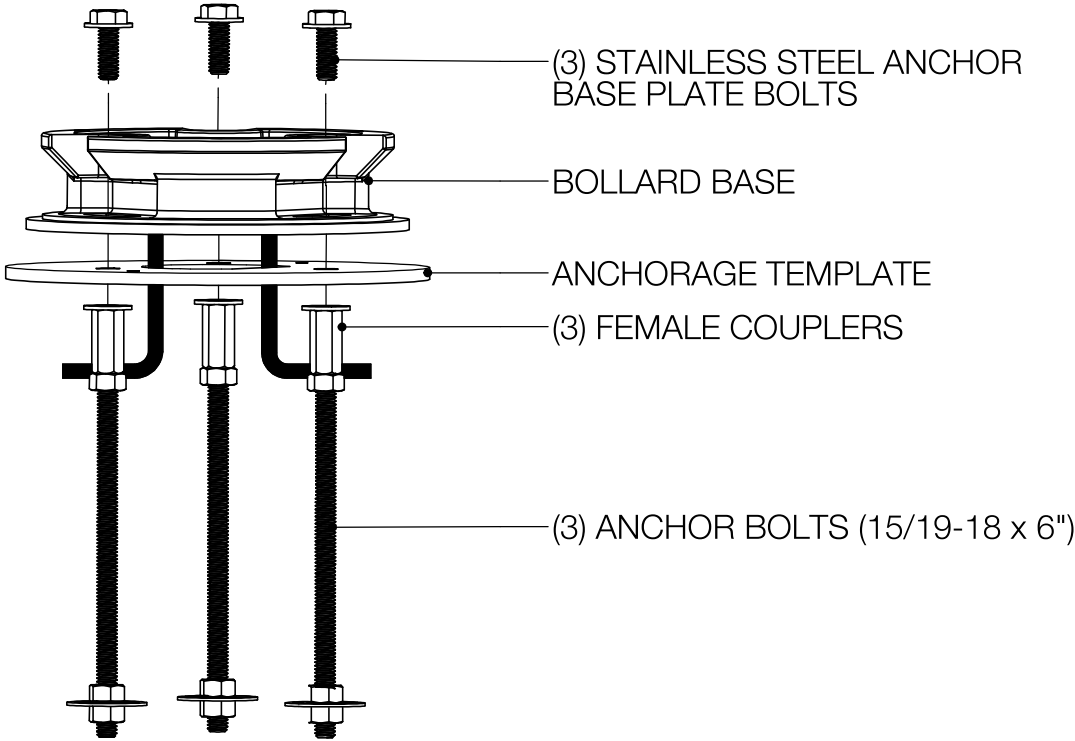
REV	CHANGED BY	DESCRIPTION	DATE



- NOTES:
1. INCLUDES: 79818 ANCHORAGE KIT
  2. HEAD IS ROTATABLE 360° ON POLE
  3. POLE AND HEAD SHIP TOGETHER

BEGA			
1000 BEGA Way, Carpinteria, California 93013		P (805) 684-0533 - <a href="http://www.bega-us.com">www.bega-us.com</a>	
APPROVED: _____ DATE: _____		DESCRIPTION: BUILDING ELEMENT - ASYMMETRIC · TWIN	
TYPE: _____			
PROPRIETARY AND CONFIDENTIAL		SIZE	REV
THE INFORMATION CONTAINED IN THIS DRAWING IS THE SOLE PROPERTY OF BEGA NORTH AMERICA, INC. ANY REPRODUCTION IN PART OR AS A WHOLE WITHOUT THE WRITTEN PERMISSION OF BEGA NORTH AMERICA, INC. IS PROHIBITED.		B	-
		PART NO.	
		84104	
		NOT TO SCALE	
		9/20/2022	
		SHEET 1 OF 2	

REV	CHANGED BY	DESCRIPTION	DATE



**BEGA**

1000 BEGA Way, Carpinteria, California 93013 P (805) 684-0533 - [www.bega-us.com](http://www.bega-us.com)

APPROVED: _____	DATE: _____	DESCRIPTION: ANCHORAGE KIT
TYPE: _____		

PROPRIETARY AND CONFIDENTIAL THE INFORMATION CONTAINED IN THIS DRAWING IS THE SOLE PROPERTY OF BEGA NORTH AMERICA, INC. ANY REPRODUCTION IN PART OR AS A WHOLE WITHOUT THE WRITTEN PERMISSION OF BEGA NORTH AMERICA, INC. IS PROHIBITED.	SIZE B	PART NO. 79818	REV -
	NOT TO SCALE	9/20/2022	SHEET 2 OF 2