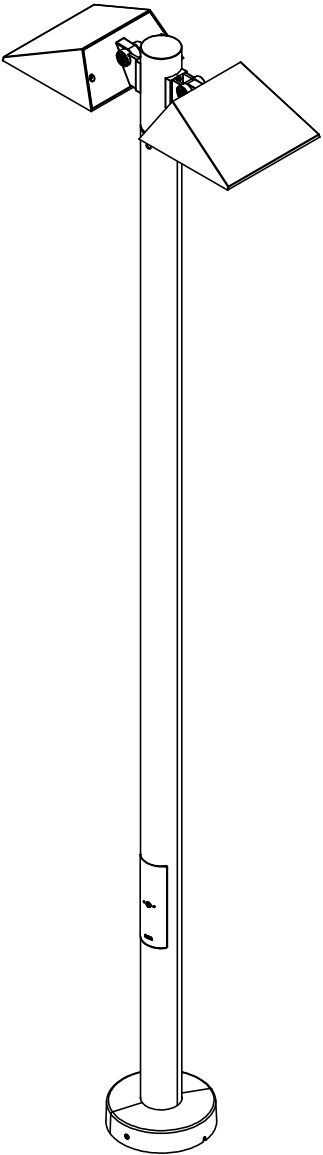
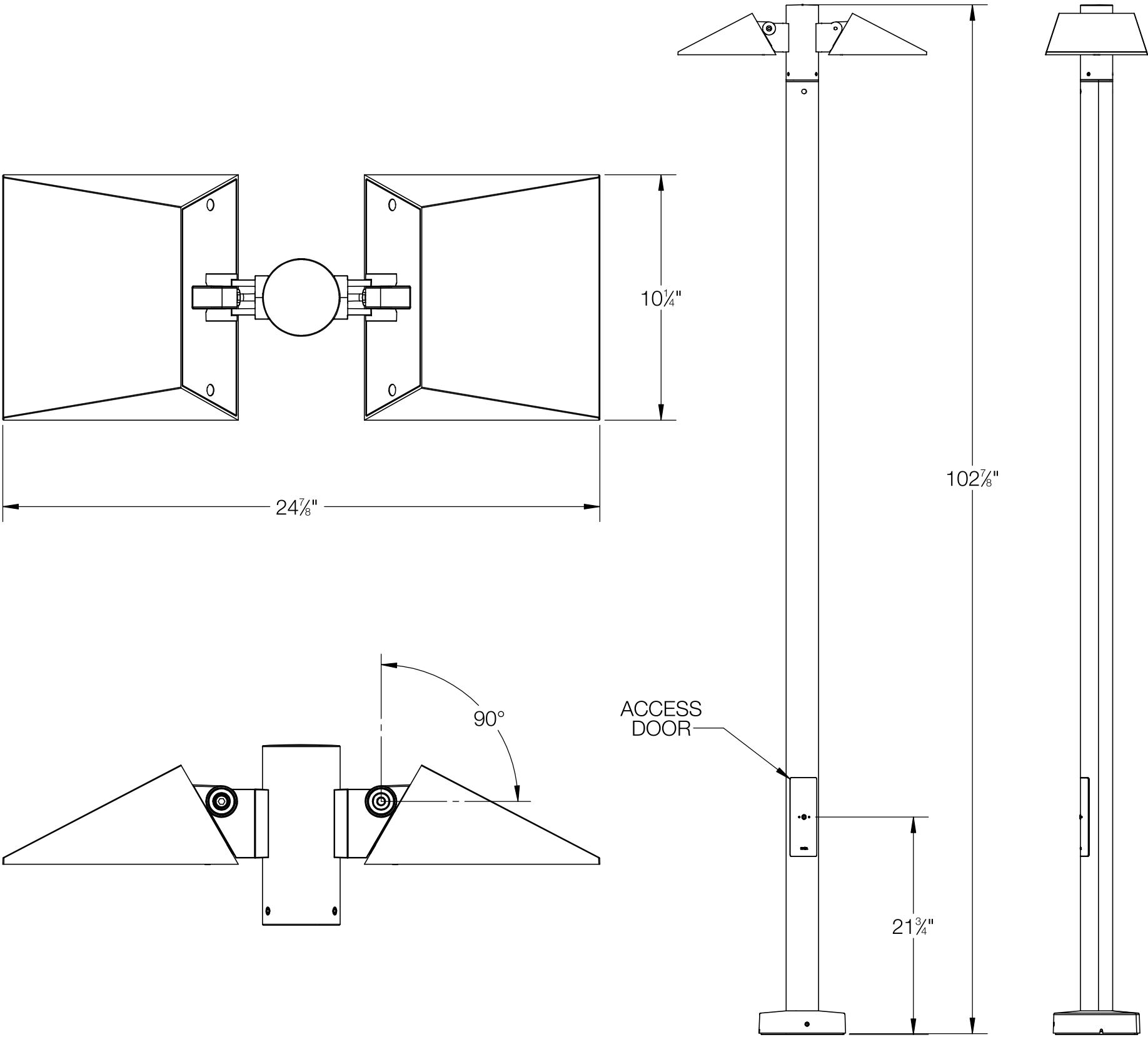


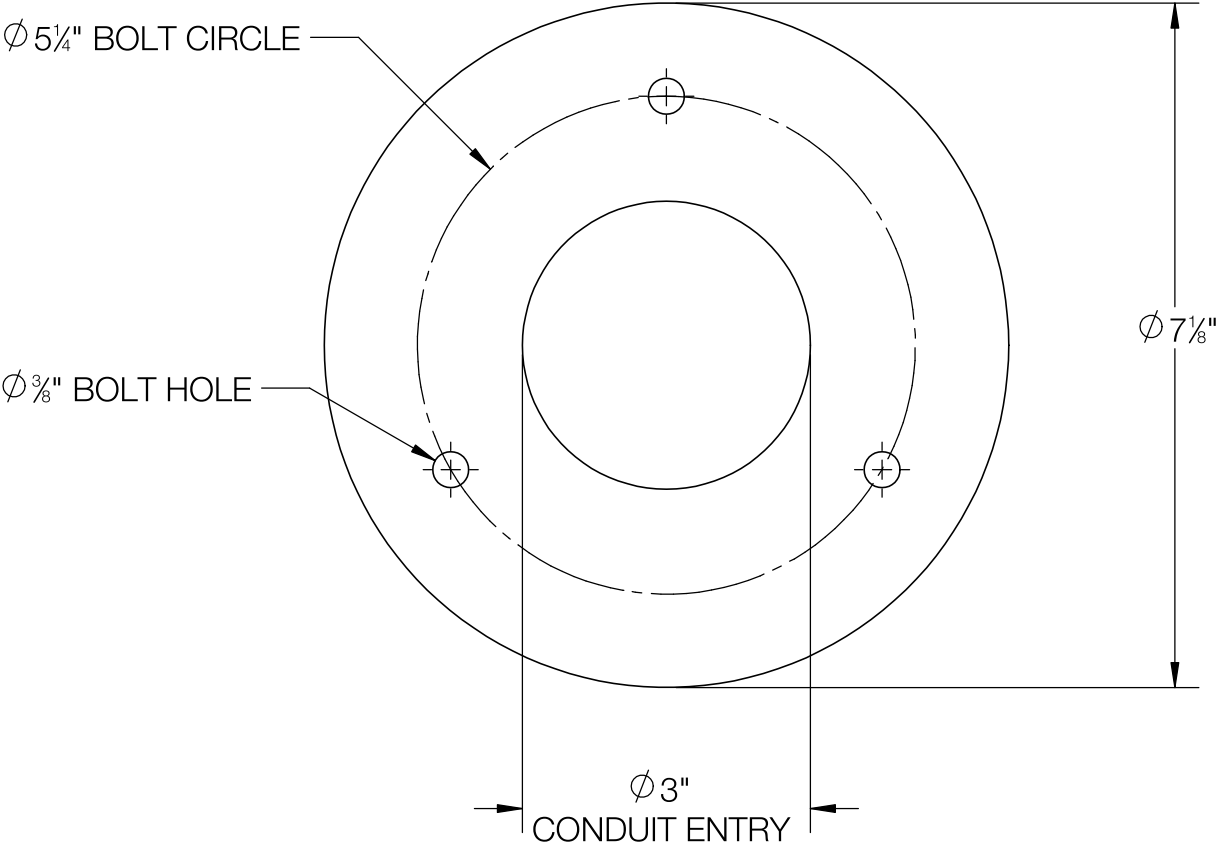
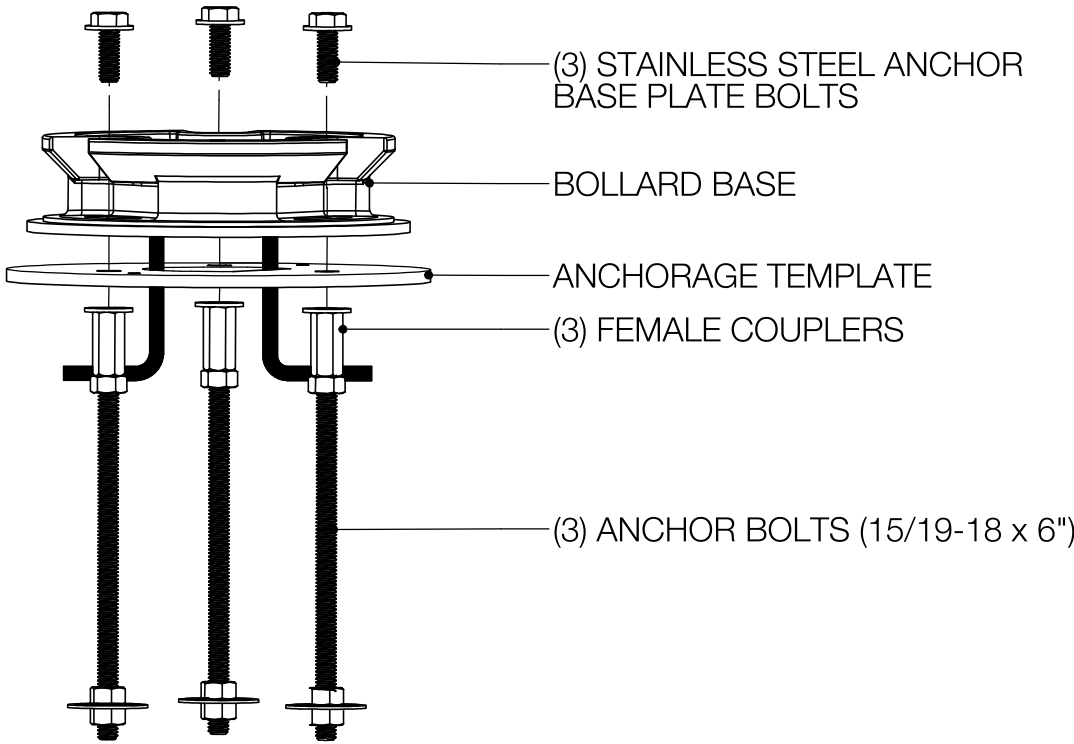
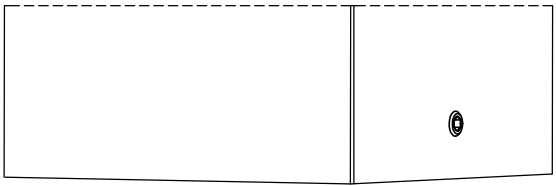
REV	CHANGED BY	DESCRIPTION	DATE



- NOTES:
1. INCLUDES: 79818 ANCHORAGE KIT
  2. HEAD IS ROTATABLE 360° ON POLE
  3. POLE AND HEAD SHIP TOGETHER

BEGA			
1000 BEGA Way, Carpinteria, California 93013		P (805) 684-0533 - <a href="http://www.bega-us.com">www.bega-us.com</a>	
APPROVED: _____ DATE: _____		DESCRIPTION: BUILDING ELEMENT -	
TYPE: _____		ASYMMETRIC WIDE BEAM· TWIN	
PROPRIETARY AND CONFIDENTIAL		SIZE	REV
THE INFORMATION CONTAINED IN THIS DRAWING IS THE SOLE PROPERTY OF BEGA NORTH AMERICA, INC. ANY REPRODUCTION IN PART OR AS A WHOLE WITHOUT THE WRITTEN PERMISSION OF BEGA NORTH AMERICA, INC. IS PROHIBITED.		B	-
		PART NO.	
		84106	
		NOT TO SCALE	SHEET 1 OF 2
		10/11/2022	

REV	CHANGED BY	DESCRIPTION	DATE



**BEGA**

1000 BEGA Way, Carpinteria, California 93013 P (805) 684-0533 - www.bega-us.com

APPROVED: \_\_\_\_\_ DATE: \_\_\_\_\_  
TYPE: \_\_\_\_\_

DESCRIPTION: ANCHORAGE KIT

**PROPRIETARY AND CONFIDENTIAL**  
THE INFORMATION CONTAINED IN THIS DRAWING IS THE SOLE PROPERTY  
OF BEGA NORTH AMERICA, INC.  
ANY REPRODUCTION IN PART OR AS A WHOLE WITHOUT THE WRITTEN  
PERMISSION OF BEGA NORTH AMERICA, INC. IS PROHIBITED.

SIZE <b>B</b>	PART NO. <b>79818</b>	REV <b>-</b>
------------------	--------------------------	-----------------

NOT TO SCALE 10/11/2022 SHEET 2 OF 2