

Application

In-grade adjustable floodlight luminaire. These luminaires are designed to bear pressure loads up to 4400 lbs. from vehicles with pneumatic tires. The luminaires must not be used for traffic lanes where they are subject to horizontal pressure from vehicles braking, accelerating and changing direction. The inclination angle is adjustable from 0-30°, and the optical assembly can be rotated 180° around the vertical axis.

Materials

- Clear safety glass
- 316 grade stainless steel
- High temperature silicone gasket
- Mechanically captive stainless steel fasteners
- Fully potted waterstopper cable
- Pure anodized aluminum reflector surface
- Composite concentric ring louver
- Silicone optic with excellent high temperature and UV stability

NRTL listed to North American Standards, suitable for wet locations  
Protection class IP 68

Weight: 13.3lbs.

Electrical

- Operating voltage 120-277V AC
- Minimum start temperature -30° C
- LED module wattage 18.5 W
- System wattage 22.0 W
- Controllability 0-10V dimmable
- Color rendering index Ra > 80
- Luminaire lumens 1130 lm
- LED service life (L70) 60000 hrs

LED color temperature

- 4000K (K4)
- 3500K (K35)
- 3000K (K3)
- 2700K (K27)

BEGA can supply you with suitable LED replacement modules for up to 20 years after the purchase of LED luminaires - see website for details

Finish

#4 brushed stainless steel. Custom colors are not available.

Type:

BEGA Product:

Project:

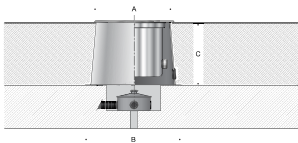
Modified:

Available options

- FSC Fusing
- NSL Non-skid lens

Included (available for pre-shipment)

- B70694 Installation housing



In-grade luminaire · Adjustable

	LED		A	B	C
B84115	18.5 W	9°	11	13 <sup>3</sup> / <sub>4</sub>	8 <sup>3</sup> / <sub>8</sub>

