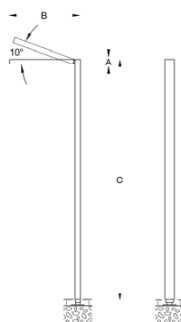


Tools Required:

5mm hex key
Philips medium screwdriver
Adjustable wrench

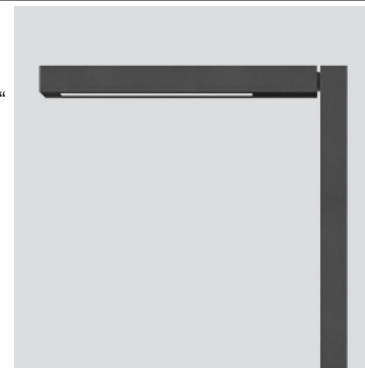
Protection Class: IP65

Weight: 83.7 lbs.



Dimensions

A: 3-3/4 " x 6-1/8 "
B: 43-3/8 "
C: 181 "



Notice to Installer for 84 126:

- See page 2 for specific product safety warnings.
- Fixture may be damaged if connected to conduit systems that contain water - Article 300-5G of the National Electric Code requires that "Conduits or raceways through which moisture may contact energized live parts shall be sealed or plugged at either or both ends."
- Anchorage kit 79 802 supplied with luminaire. See separate 79 802 instructions for installation.

79 802 installation for 84 126:

- Provide means to bring supply wiring to linear element in accordance with local code. The template has a 2-1/8" x 4-1/2" conduit opening for conduit entry. Provide adequate foundation reinforcement for the intended load (by others).
- Use template and anchor bolts provided to assemble anchorage kit to be set. Make sure anchor bolts do not protrude from lower concrete foundation more than 2-1/4" as shown.
- Please refer to Figure 1 to establish location of lower concrete foundation. The anchorage kit **MUST BE** buried. The top of the lower concrete foundation **MUST** be 5-11/16" BELOW finished grade for proper installation. Position anchorage and level template properly.
- Align and level anchorage kit so the orientation of the rectangular conduit hole is perpendicular to the desired orientation of the linear element. (Match the corners of the rectangular shaft on the mounting base with the corners of the rectangular linear element.) See separate instructions for 79 802 for specific installation guidelines.
- Install anchorage kit using either method:
 - Attach template to forming and level properly.
 - Insert anchorage kit into poured concrete. Concrete must be vibrated to ensure proper anchorage setting. Level template properly.

84 126: Installing luminaire housing at the pole:

- Once the anchorage is set, remove the template and hardware.
- Pull supply wiring to a length where splices can be seen and made through the access door.
- Route supply wiring through the mounting base and install mounting base using hardware provided. Complete finished grade.
- Undo hex screw in the pole cap and remove pole cap.
- Remove hex screws and disassemble reinforcement plate at the luminaire housing in order to bring luminaire wire through pole.
- Use special tool provided to unlock the access door lock and remove access door. Route the luminaire wiring down and out the hand hold for connections to be made later.
- Loosen (8) M10 set screws at the base of the light element and place the light element over the mounting base. Tighten (8) M10 set screws to secure to base.
- Make supply wiring connections to wire leads inside the luminaire:
 - MAIN VOLTAGE SUPPLY WIRE TO BLACK LUMINAIRE WIRE
 - NEUTRAL (COMMON) SUPPLY WIRE TO WHITE LUMINAIRE WIRE
 - GREEN GROUND WIRE TO GREEN LUMINAIRE WIRE
- Dimming (if applicable):
 - DIMMING CONTROL WIRE (+) TO POSITIVE DRIVER DIM CONTROL WIRE
 - DIMMING CONTROL WIRE (-) TO NEGATIVE DRIVER DIM CONTROL WIRE
- To adjust luminaire head tilt, loosen reinforcement plate and adjust to desired angle. Tighten reinforcement plate evenly and replace pole cap.

Relamping/Maintenance

To clean, loosen faceplate screws and hinge down faceplate. Clean inner luminaire housing, reflector, and lens with solvent-free cleansers only. Close luminaire, making sure the gasket is seated properly.

Accessories

Please refer to the appropriate accessory installation sheet for further instruction when applicable.

Anchorage 79 802

Replacement Parts

Description	Part No
Lens assembly	FP8977
Lens gasket	83001654
LED driver (120-277V)	75985-03
LED board (3000K)	LED-0147/830
LED board (4000K)	LED-0147/840

Lamp: 39.2W LED

Figure 1

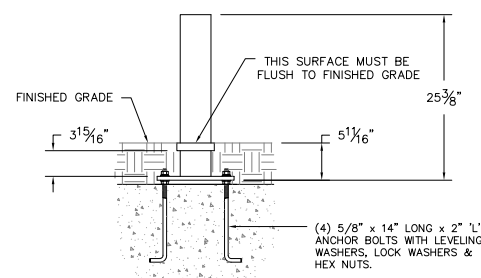


Figure 2

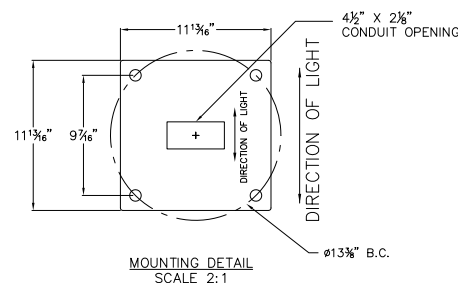
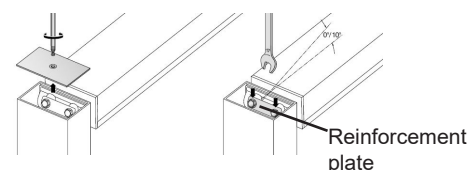


Figure 3



Product Safety Warnings:

CAUTION- RISK OF FIRE. THIS PRODUCT MUST BE INSTALLED IN ACCORDANCE WITH THE APPLICABLE INSTALLATION CODE BY A PERSON FAMILIAR WITH THE CONSTRUCTION AND OPERATION OF THE PRODUCT AND THE HAZARDS INVOLVED. SUITABLE FOR WET LOCATIONS.

MIN 90°C SUPPLY CONDUCTORS.

ATTENTION- RISQUE D'INCENDIE. CE PRODUIT DOIT ÊTRE INSTALLÉ SELON LE CODE D'INSTALLATION PERTINENT, PAR UNE PERSONNE QUI CONNAÎT BIEN LE PRODUIT ET SON FONCTIONNEMENT AINSI QUE LES RISQUES INHÉRENTS. CONVIENT AUX EMPLACEMENTS MOUILLÉS.

LES FILS D'ALIMENTATION 90°C MIN.