

Tools Required:
3mm hex key
4mm hex key
5mm hex key
8mm hex key
Special tool (provided)

Protection Class: IP 65

Weight: 135 lbs.

WiFi LED light building element - asymmetric



Dimensions

- A:** 8 5/8"
B: 27 1/2"
C: 197"
D: 39 3/8"



Notice to Installer for 84 130:

- Luminaire is rated for direct burial installations.**
- Consult structural engineer and local codes for burial and foundation size and specs.
- Proper drainage below and around the buried portion of the luminaire **MUST** be provided. Failure to do so may void warranty.
- Wet location listing does not imply suitability for exposure to standing water for long periods of time.
- Fixture may be damaged if connected to conduit systems that contain water - Article 300-5G of the National Electric Code requires that "Conduits or raceways through which moisture may contact energized live parts shall be sealed or plugged at either or both ends."
- LEDs are high-quality electronic components! Please avoid touching the light output opening of the LED directly during installation.
- Floodlight segment and WiFi segment must be installed before installation of fixture head.
- Communication/network cable and power wires must be run in separate conduits to prevent interference.
- Connection to (4) built-in dual-band antenna are made via (4) type N-Male connectors inside of WiFi segment.
- See final page for specific product safety warnings.

84 130 pole installation:

- NOTE: AP/router (by others) must be connected into the WiFi segment before installation of head .**
NOTE: SIZE OF THE FOUNDATION REQUIRED TO SET THE UNIT IN CONCRETE MUST BE DETERMINED AT SITE BY STRUCTURAL ENGINEER.
- Fix ground plate to pole per (Figure 1).
- Pull supply wiring to a length where splices can be made through the lower access door. Communication/network cable must be pulled to upper WiFi access door.
- Route supply wiring through the mounting base and install pole (Figure 1, Figure 2) Use special tool provided to unlock the access door lock and remove access door.
- Route the luminaire wiring to the hand hold for connections.
- Continue to floodlight installation (Page 2).

Figure 1

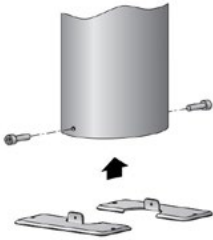
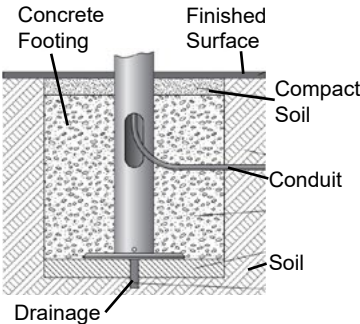


Figure 2



NOTE: Consult engineer and local codes for direct burial specification.

Relamping/Maintenance		Accessories		Replacement Parts	
Clean luminaire regularly with solvent-free cleansers from dirt and debris. Do not use high pressure cleaners.		Please refer to the appropriate accessory installation sheet for further instruction when applicable.		<u>Description</u>	<u>Part No</u>
Lamp:	46.8W LED (Luminaire)	Flat Beam Lens	10 016	LED Driver (120-277V)	(1X) 76132-02
	11.5W LED (Floodlight)	Wide Beam Lens	10 047	LED Module (2700K)	(1X) LED-0502/827
				LED Module (3000K)	(1X) LED-0502/830
				LED Module (3500K)	(1X) LED-0502/835
				LED Module (4000K)	(1X) LED-0502/840
				<u>Floodlight</u>	
				LED Driver (120-277V)	(1X) 75983-01
				LED Module (2700K)	(1X) LED-0833/827
				LED Module (3000K)	(1X) LED-0833/830
				LED Module (3500K)	(1X) LED-0833/835
				LED Module (4000K)	(1X) LED-0833/840

In the interest of product improvement, BEGA reserves the right to make technical changes without notice.

Tools Required:
3mm hex key
4mm hex key
5mm hex key
8mm hex key
Special tool (provided)

Protection Class: IP 65

Weight: 135 lbs.

WiFi LED light building element - asymmetric



Dimensions

- A:** 8 5/8"
B: 27 1/2"
C: 197"
D: 39 3/8"



84 130 floodlight segment installation:

- Loosen the (2) 4mm hex screws on the top of the floodlight segment and remove floodlight from retaining ring (Figure 1)
- Insert retaining ring as shown in (Figure 2) into pole opening by aligning the arrow on the retaining ring to the notch on pole.
- Following (Figure 3) twist to align retaining ring. The arrow on the retaining ring defines the direction of the floodlight.
- Slide floodlight segment back onto the tension ring (Figure 1) and lead wiring through center.
- Tighten the (2) 4mm hex screws until they are firmly in place.
- Make supply wiring and luminaire wiring connections inside the luminaire at the lower access door:
MAIN VOLTAGE SUPPLY WIRE TO BLACK LUMINAIRE WIRE
NEUTRAL (COMMON) SUPPLY WIRE TO WHITE LUMINAIRE WIRE
GREEN GROUND WIRE TO GREEN LUMINAIRE WIRE
Dimming (if applicable):
DIMMING CONTROL WIRE (+) TO POSITIVE DRIVER DIM CONTROL WIRE
DIMMING CONTROL WIRE (-) TO NEGATIVE DRIVER DIM CONTROL WIRE.
- Adjust the beam direction by loosening (2) hex screws located above and below floodlight lens, tighten when complete.

Figure 1

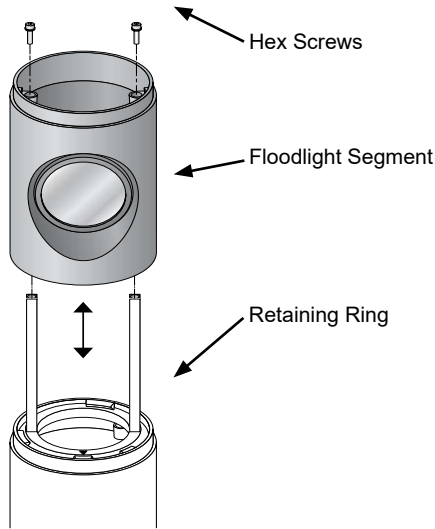


Figure 2

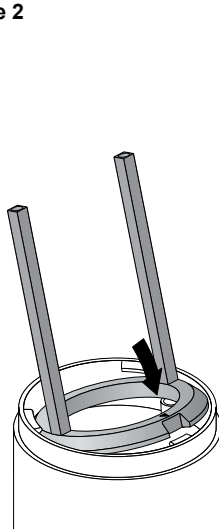
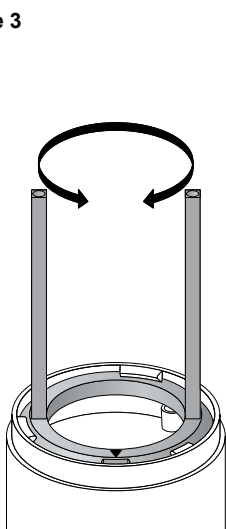


Figure 3



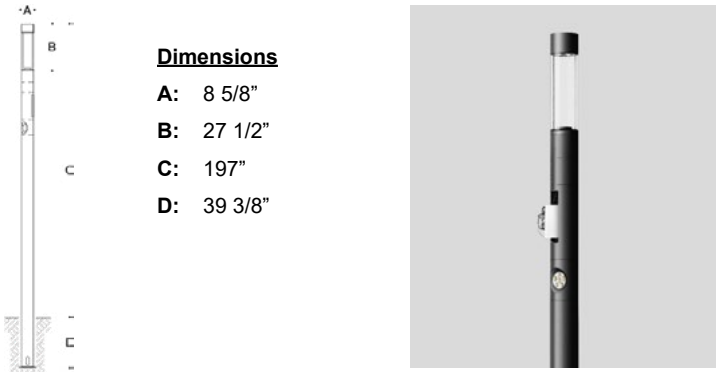
Relamping/Maintenance		Accessories		Replacement Parts	
Clean luminaire regularly with solvent-free cleansers from dirt and debris. Do not use high pressure cleaners.		Please refer to the appropriate accessory installation sheet for further instruction when applicable.		<u>Description</u>	<u>Part No</u>
Lamp:	46.8W LED (Luminaire)	Flat Beam Lens	10 016	LED Driver (120-277V)	(1X) 76132-02
	11.5W LED (Floodlight)	Wide Beam Lens	10 047	LED Module (2700K)	(1X) LED-0502/827
				LED Module (3000K)	(1X) LED-0502/830
				LED Module (3500K)	(1X) LED-0502/835
				LED Module (4000K)	(1X) LED-0502/840
				<u>Floodlight</u>	
				LED Driver (120-277V)	(1X) 75983-01
				LED Module (2700K)	(1X) LED-0833/827
				LED Module (3000K)	(1X) LED-0833/830
				LED Module (3500K)	(1X) LED-0833/835
				LED Module (4000K)	(1X) LED-0833/840

In the interest of product improvement, BEGA reserves the right to make technical changes without notice.

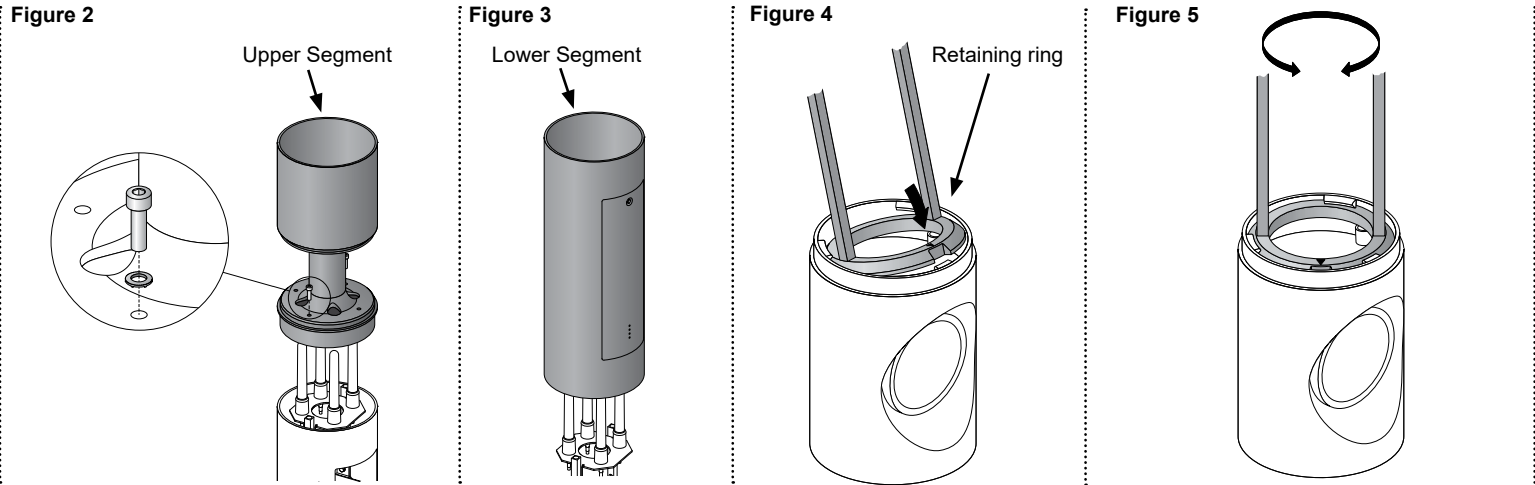
Tools Required:
3mm hex key
4mm hex key
5mm hex key
8mm hex key
Special tool (provided)

Protection Class: IP 65

Weight: 135 lbs.



- 84 130 WiFi segment installation:**
- Loosen the antenna cover plate screw by using a 3mm hex key to remove (4) screws (Figure 1).
 - Remove the WiFi access door shown in (Figure 1), by using the special tool provided.
 - Using a 4mm hex key, unscrew the (2) 8mm hex screws to separate upper (Figure 2) and lower segments shown in (Figure 3).
 - Insert retaining ring as shown in (Figure 4) into floodlight segment by aligning the arrow on the retaining ring to the notch on segment.
 - Place the lower segment back over the WiFi antenna and retaining ring (Figure 2), then twist the lower segment until the WiFi access door aligns with device bracket sliding direction.
 - Place the upper segment over the WiFi antenna and screw into place using a 4mm hex key (Figure 2).
 - Fasten the WiFi router/AP to the device bracket using screws (provided) or other suitable hardware.
 - Connect the WiFi antenna cables to the router/AP.
 - Refer to (Page 5) for an example router/AP installation.
 - See (Page 4) for fixture head installation.



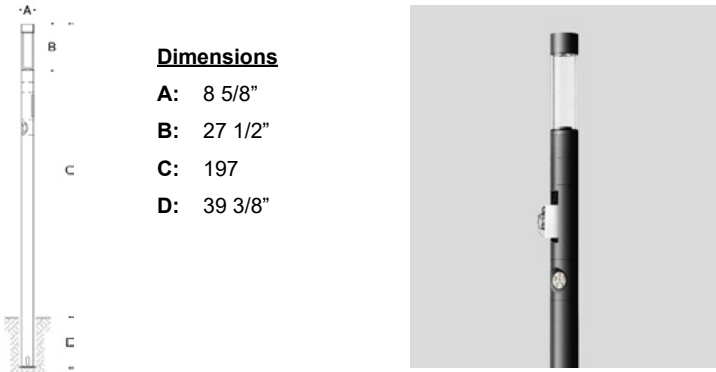
Relamping/Maintenance		Accessories		Replacement Parts	
Clean luminaire regularly with solvent-free cleansers from dirt and debris. Do not use high pressure cleaners.		Please refer to the appropriate accessory installation sheet for further instruction when applicable.		<u>Description</u>	<u>Part No</u>
Lamp:	46.8W LED (Luminaire)	Flat Beam Lens	10 016	LED Driver (120-277V)	(1X) 76132-02
	11.5W LED (Floodlight)			LED Module (2700K)	(1X) LED-0502/827
		Wide Beam Lens	10 047	LED Module (3000K)	(1X) LED-0502/830
				LED Module (3500K)	(1X) LED-0502/835
				LED Module (4000K)	(1X) LED-0502/840
				<u>Floodlight</u>	
				LED Driver (120-277V)	(1X) 75983-01
				LED Module (2700K)	(1X) LED-0833/827
				LED Module (3000K)	(1X) LED-0833/830
				LED Module (3500K)	(1X) LED-0833/835
				LED Module (4000K)	(1X) LED-0833/840

In the interest of product improvement, BEGA reserves the right to make technical changes without notice.

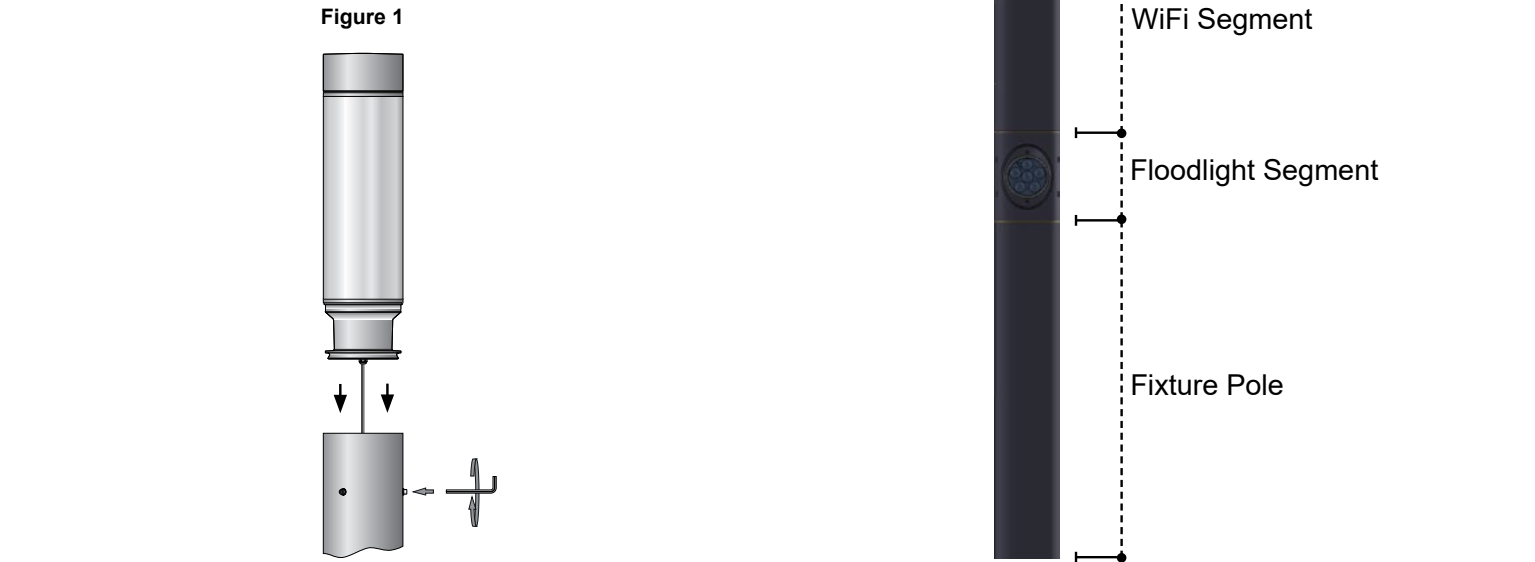
Tools Required:
3mm hex key
4mm hex key
5mm hex key
8mm hex key
Special tool (provided)

Protection Class: IP 65

Weight: 135 lbs.



- 84 130 fixture head installation:**
- Lead head wiring connections through pole then place and align fixture head on pole.
 - Secure head onto pole by tightening (4) M5 hex key.
 - Make supply wiring and luminaire wiring connections inside the luminaire at the lower access door:
MAIN VOLTAGE SUPPLY WIRE TO BLACK LUMINAIRE WIRE
NEUTRAL (COMMON) SUPPLY WIRE TO WHITE LUMINAIRE WIRE
GREEN GROUND WIRE TO GREEN LUMINAIRE WIRE
Dimming (if applicable):
DIMMING CONTROL WIRE (+) TO POSITIVE DRIVER DIM CONTROL WIRE
DIMMING CONTROL WIRE (-) TO NEGATIVE DRIVER DIM CONTROL WIRE.
 - Once all segments are attached and connections have been made, attach and lock access door.



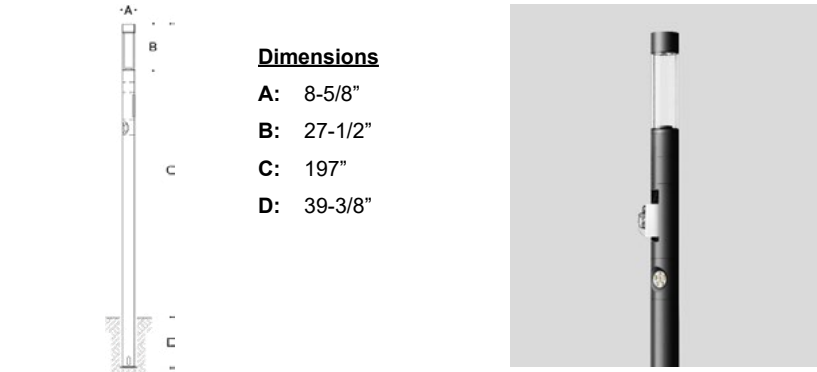
Relamping/Maintenance		Accessories		Replacement Parts	
Clean luminaire regularly with solvent-free cleansers from dirt and debris. Do not use high pressure cleaners.		Please refer to the appropriate accessory installation sheet for further instruction when applicable.		<u>Description</u>	<u>Part No</u>
Lamp:	46.8W LED (Luminaire)	Flat Beam Lens	10 016	LED Driver (120-277V)	(1X) 76132-02
	11.5W LED (Floodlight)			LED Module (2700K)	(1X) LED-0502/827
		Wide Beam Lens	10 047	LED Module (3000K)	(1X) LED-0502/830
				LED Module (3500K)	(1X) LED-0502/835
				LED Module (4000K)	(1X) LED-0502/840
				<u>Floodlight</u>	
				LED Driver (120-277V)	(1X) 75983-01
				LED Module (2700K)	(1X) LED-0833/827
				LED Module (3000K)	(1X) LED-0833/830
				LED Module (3500K)	(1X) LED-0833/835
				LED Module (4000K)	(1X) LED-0833/840

In the interest of product improvement, BEGA reserves the right to make technical changes without notice.

Tools Required:
3mm hex key
4mm hex key
5mm hex key
8mm hex key
Special tool (provided)

Protection Class: IP 65

Weight: 132 lbs.



FIXTURE HEAD

