

Application

An in-grade luminaire for installation in concrete or soil, and intended to provide a uniform wall wash. Designed to bear pressure loads up to 4,400 lbs. from vehicles with pneumatic tires. The luminaire must not be used for traffic lanes where it is subject to horizontal pressure from vehicles braking, accelerating or changing direction.

Materials

- Clear safety glass
- 316 grade stainless steel
- High temperature silicone gasket
- Mechanically captive stainless steel fasteners
- Fully potted waterstopper cable
- Pure anodized aluminum reflector surface

NRTL listed to North American Standards, suitable for wet locations
Protection class IP 68

Weight: 6.4 lbs.

Electrical

Operating voltage	120-277VAC
Minimum start temperature	-30° C
LED module wattage	7.8W
System wattage	12.0W
Controllability	0-10V dimmable
Color rendering index	Ra > 80
Luminaire lumens	838lm
LED service life (L70)	60000hrs

LED color temperature

- 4000K (K4)
- 3500K (K35)
- 3000K (K3)
- 2700K (K27)

BEGA can supply you with suitable LED replacement modules for up to 20 years after the purchase of LED luminaires - see website for details

Finish

#4 brushed stainless steel. Custom colors are not available.

Type:

BEGA Product:

Project:

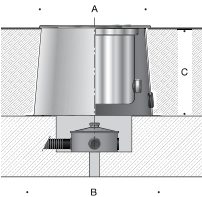
Modified:


Available options

- DALI-2 Enabled for DALI control system

Included (available for pre-shipment)

- B680 Installation housing



In-grade luminaire · Wall washer					
	LED		A	B	C
B84153	7.8 W	55°x40°	8 1/8	10 5/8	7 1/2

