

Application
An in-grade luminaire for installation in concrete or soil, and intended to provide a uniform wall wash. Designed to bear pressure loads up to 4,400 lbs. from vehicles with pneumatic tires. The luminaire must not be used for traffic lanes where it is subject to horizontal pressure from vehicles braking, accelerating or changing direction.

Materials
Clear safety glass
316 grade stainless steel
High temperature silicone gasket
Mechanically captive stainless steel fasteners
Fully potted waterstopper cable
Pure anodized aluminum reflector surface

NRTL listed to North American Standards, suitable for wet locations
Protection class IP 68

Weight: 8.8 lbs.

Electrical

Operating voltage	120-277VAC
Minimum start temperature	-30° C
LED module wattage	13.7 W
System wattage	17.0 W
Controllability	0-10V, TRIAC, and ELV dimmable
Color rendering index	Ra > 80
Luminaire lumens	1488 lm
LED service life (L70)	60000hrs

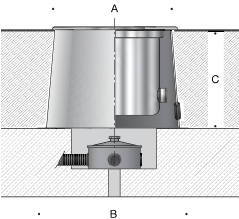
LED color temperature
4000K (K4)
3500K (K35)
3000K (K3)
2700K (K27)

BEGA can supply you with suitable LED replacement modules for up to 20 years after the purchase of LED luminaires - see website for details

Finish
#4 brushed stainless steel. Custom colors are not available.

Type:
BEGA Product:
Project:
Modified:

Included (available for pre-shipment)
B687 Installation housing



In-grade luminaire · Wall washer					
	LED	□	A	B	C
B84154	13.7 W	54°x41°	9 ⁵ / ₈	12 ¹ / ₄	8 ¹ / ₄

