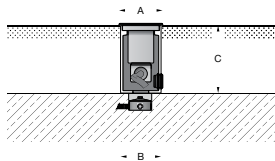


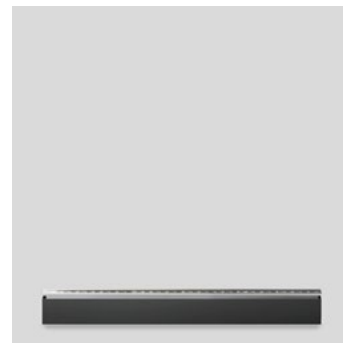
**Tools Required:**

5mm Torx Screwdriver



**Dimensions**

**A:** 3 1/4 x 59 3/4  
**B:** 3 1/8 x 59 5/8  
**C:** 5 1/8"

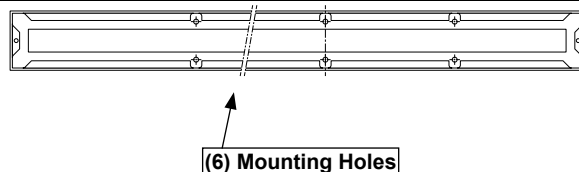


**Protection Class:** IP67

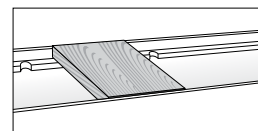
**Weight:** 32.0 lbs.

**Notice to Installer for 84 167:**

1. **BEGA luminaires may be damaged if connected to conduit systems containing water - Article 300-5G of National Electric Code requires that "Conduits or raceways through which moisture may contact energized live parts shall be sealed or plugged at either or both ends".**
2. A separate wiring box suitable for outdoor locations for supply power must be provided (by others).
3. Luminaires are pre-wired with (9) feet of waterproof cable, factory sealed to the luminaire housing.
4. Proper drainage **MUST** be provided for wiring box and installation housing.
5. Installation housing and finished surface must be installed so that the top of the installation housing sits flush or slightly above the finished surface.
6. Must be anchored to a grade medium (1-1/2" minimum depth) which is suitable for intended loading.



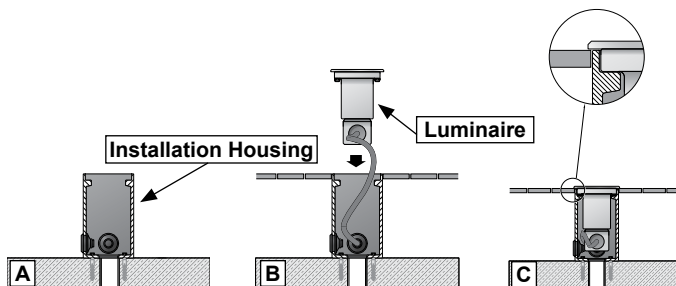
**Figure 1: Mounting Holes**



**Figure 2: Wood Spacers**

**84 167 - Outer Housing Installation:**

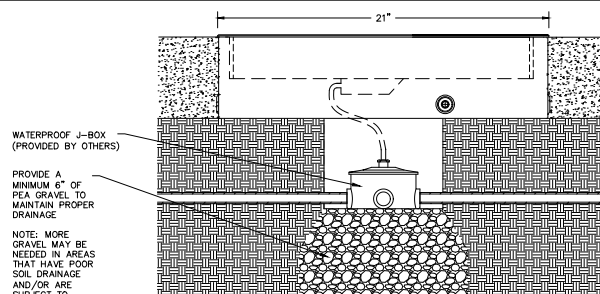
1. Establish foundation for installation housing. Use (6) 3/8" mounting holes in the bottom of installation housing, anchor installation housing to a suitable foundation using hardware (by others). **[Figure 3A]** Provide proper drainage.
2. Insert wooden spacer (by others) to the installation housing to provide additional stability when finishing the surface. **[Figure 2]**
3. The top edge of the installation housing must be flush with the finished surface. **[Figure 3C]**
4. Finish surface around installation housing.



**Figure 3: Installation**

**84 167 - Luminaire Installation:**

1. Using the provided (9) foot waterproof cable, establish location of wiring box (by others), ensure enough cable is left for removing the luminaire from the installation housing to allow for maintainance.
2. Using waterproof connector (provided) make supply wiring and cable connections inside wiring box:  
 MAIN VOLTAGE SUPPLY WIRE TO BLACK LUMINAIRE WIRE;  
 NEUTRAL (COMMON) SUPPLY WIRE TO WHITE LUMINAIRE WIRE;  
 GREEN (GROUND) WIRE TO GREEN LUMINAIRE WIRE  
 0-10V Dimming (if applicable):  
 DIMMING CONTROL WIRE (+) TO POSITIVE DRIVER DIM CONTROL WIRE  
 DIMMING CONTROL WIRE (-) TO NEGATIVE DRIVER DIM CONTROL WIRE
3. Install luminaire into installation housing **[Figure 3B]**. Tighten (2) 5mm Torx faceplate screws to secure luminaire to installation housing.



**Figure 4: Example**

**Relamping/Maintenance**

No relamping necessary.

**Accessories**

Please refer to the appropriate accessory installation sheet for further instruction when applicable.

**Replacement Parts**

Description	Part No
LED Driver (120-277V)	(1X) 75969-04
LED Module (2700K)	(6X) LED-0771/827
LED Module (3000K)	(6X) LED-0771/830
LED Module (3500K)	(6X) LED-0771/835
LED Module (4000K)	(6X) LED-0771/840

**Lamp:** 47.4W LED

**Product Safety Warnings:**

**THIS PRODUCT MUST BE INSTALLED IN ACCORDANCE WITH THE APPLICABLE INSTALLATION CODE BY A PERSON FAMILIAR WITH THE CONSTRUCTION AND OPERATION OF THE PRODUCT AND THE HAZARDS INVOLVED. SUITABLE FOR WET LOCATIONS.**

**MIN 60°C SUPPLY CONDUCTORS.**

**CE PRODUIT DOIT ÊTRE INSTALLÉ SELON LE CODE D'INSTALLATION PERTINENT, PAR UNE PERSONNE QUI CONNAÎT BIEN LE PRODUIT ET SON FONCTIONNEMENT AINSI QUE LES RISQUES INHÉRENTS. CONVIENT AUX EMPLACEMENTS MOUILLÉS.**

**LES FILS D'ALIMENTATION 60°C MIN.**

---