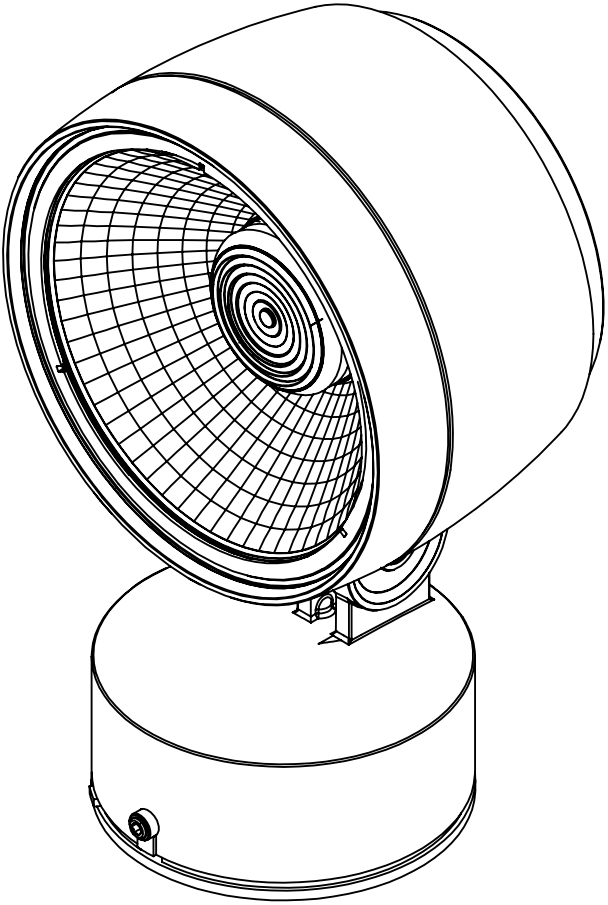
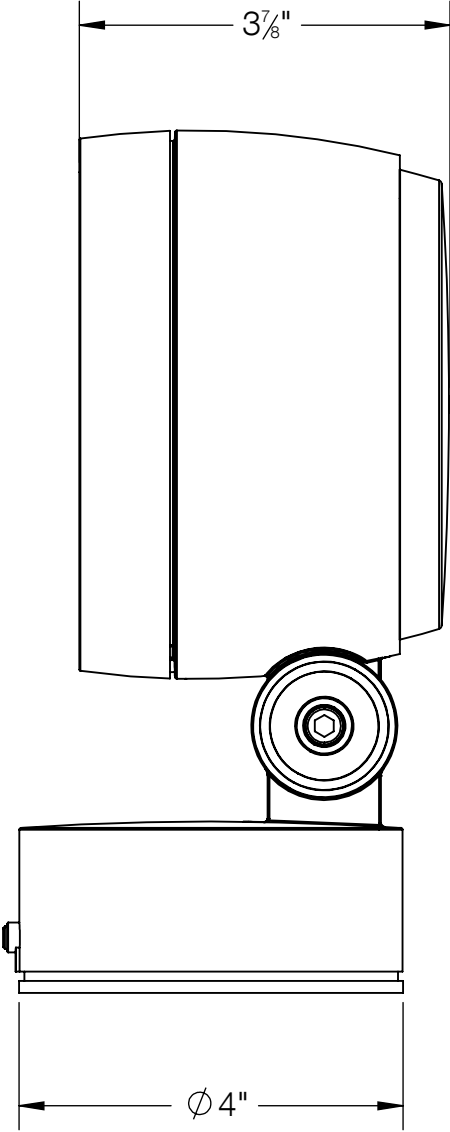
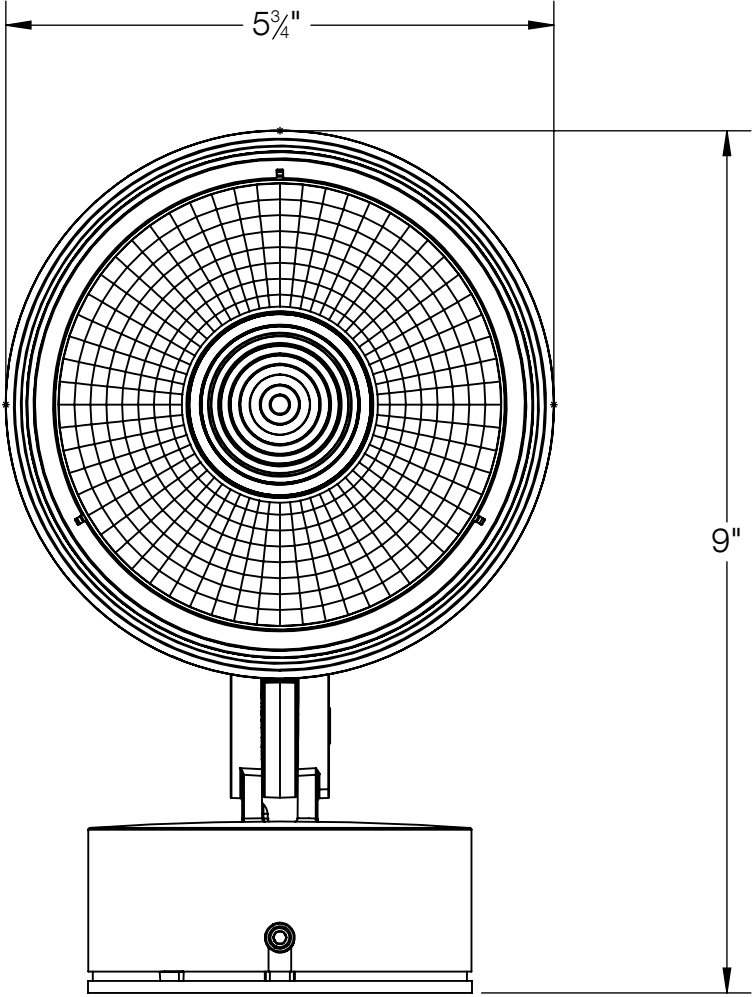


REV	CHANGED BY	DESCRIPTION	DATE

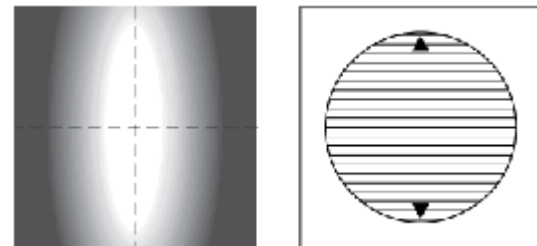
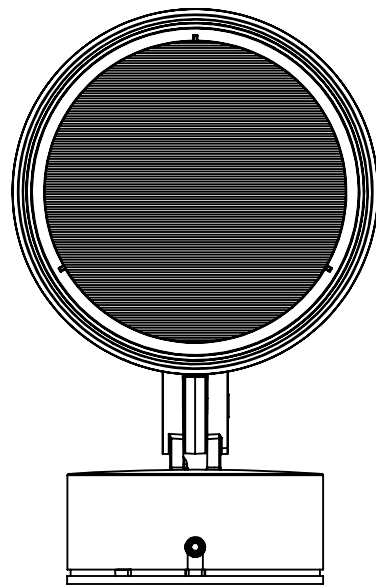


BEGA

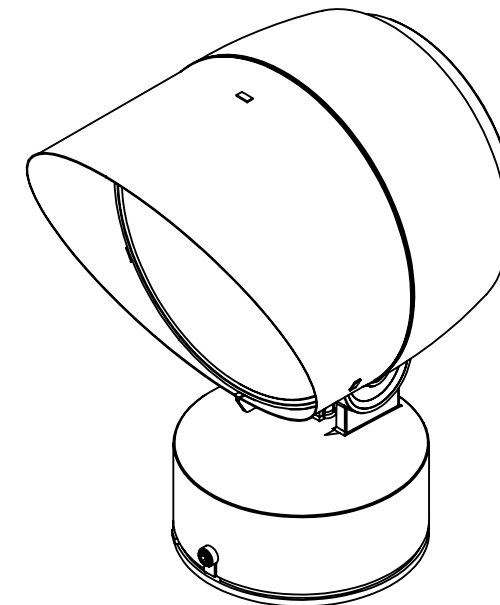
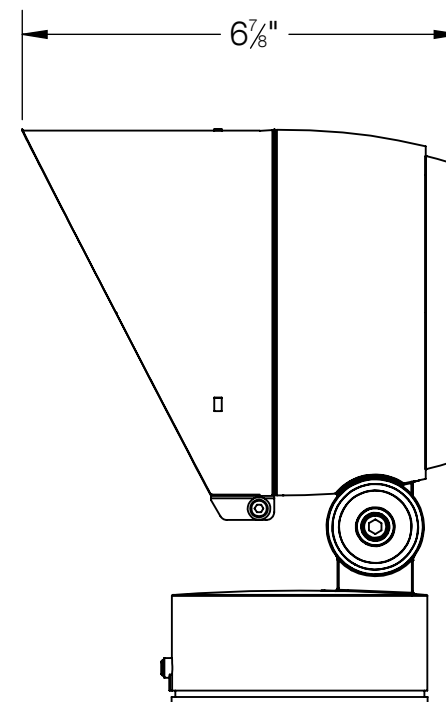
1000 BEGA Way, Carpinteria, California 93013 P (805) 684-0533 - www.bega-us.com

APPROVED: _____ DATE: _____ DESCRIPTION: PERFORMANCE FLOODLIGHT
TYPE: _____ WIDE BEAM

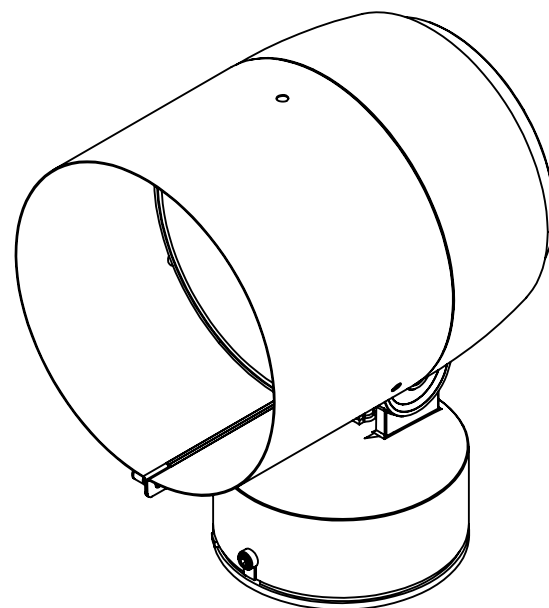
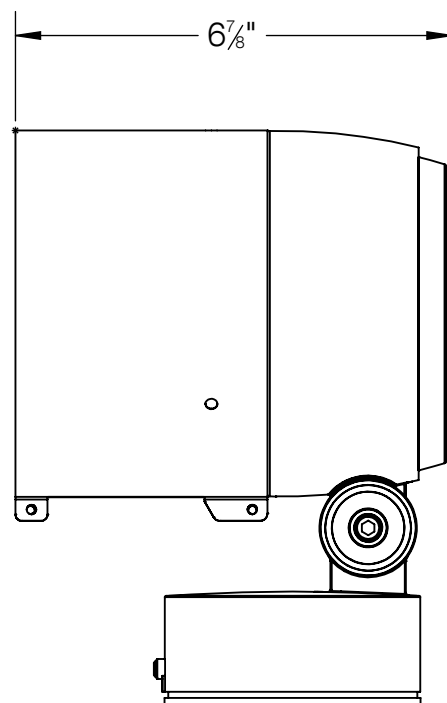
PROPRIETARY AND CONFIDENTIAL THE INFORMATION CONTAINED IN THIS DRAWING IS THE SOLE PROPERTY OF BEGA NORTH AMERICA, INC. ANY REPRODUCTION IN PART OR AS A WHOLE WITHOUT THE WRITTEN PERMISSION OF BEGA NORTH AMERICA, INC. IS PROHIBITED.	SIZE	PART NO.	REV
	B	84210	-
	NOT TO SCALE	6/2/2022	SHEET 1 OF 2



84210 SHOWN WITH ELLIPTICAL SPREAD LENS ACCESSORY 71120
LENS IS ROTATABLE 360°



84210 SHOWN WITH 180° GLARE SHIELD ACCESSORY 71118
GLARE SHIELD IS ROTATABLE 360°



84210 SHOWN WITH 360° GLARE SHIELD ACCESSORY 79829
GLARE SHIELD IS ROTATABLE 360°

BEGA

1000 BEGA Way, Carpinteria, California 93013

P (805) 684-0533 - www.bega-us.com

APPROVED: _____ DATE: _____
TYPE: _____

DESCRIPTION: PERFORMANCE FLOODLIGHT
WIDE BEAM

PROPRIETARY AND CONFIDENTIAL

THE INFORMATION CONTAINED IN THIS DRAWING IS THE SOLE PROPERTY
OF BEGA NORTH AMERICA, INC.
ANY REPRODUCTION IN PART OR AS A WHOLE WITHOUT THE WRITTEN
PERMISSION OF BEGA NORTH AMERICA, INC. IS PROHIBITED.

SIZE	PART NO.	REV
B	84210	-
NOT TO SCALE	6/2/2022	SHEET 2 OF 2