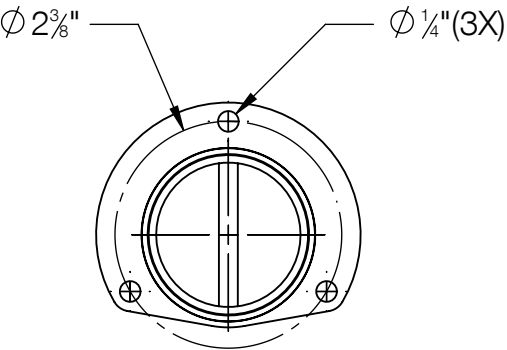


REV	CHANGED BY	DESCRIPTION	DATE



Anchorage Detail

BEGA				
1000 BEGA Way, Carpinteria, California 93013			P (805) 684-0533 - www.bega-us.com	
APPROVED: _____		DATE: _____		DESCRIPTION:
TYPE: _____				GARDEN AND PATHWAY LUMINAIRE
PROPRIETARY AND CONFIDENTIAL		SIZE	PART NO.	REV
THE INFORMATION CONTAINED IN THIS DRAWING IS THE SOLE PROPERTY OF BEGA NORTH AMERICA, INC.		B	84 218	-
ANY REPRODUCTION IN PART OR AS A WHOLE WITHOUT THE WRITTEN PERMISSION OF BEGA NORTH AMERICA, INC. IS PROHIBITED.		NOT TO SCALE	02/17/2021	SHEET 1 OF 1