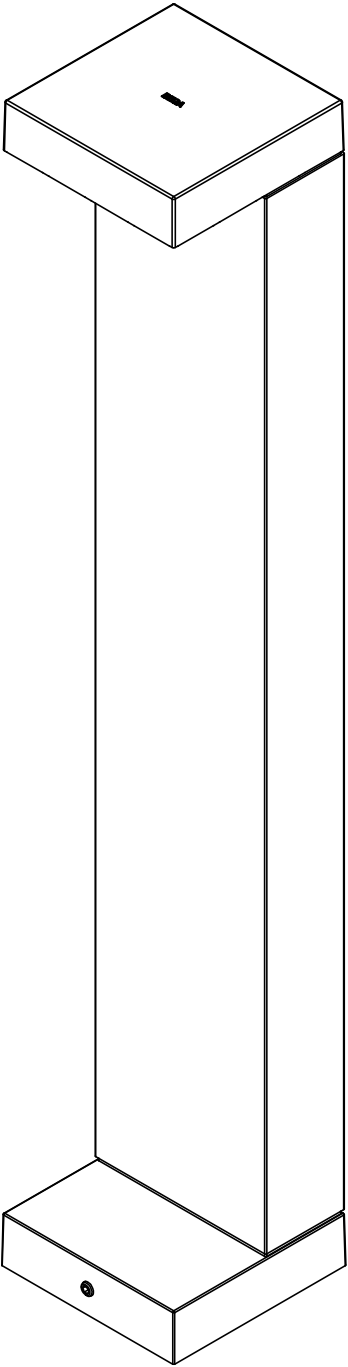


Ø 3 15/16" BOLT CIRCLE

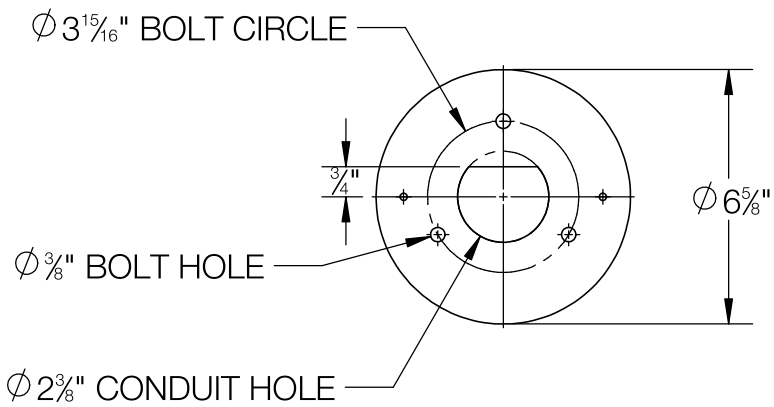
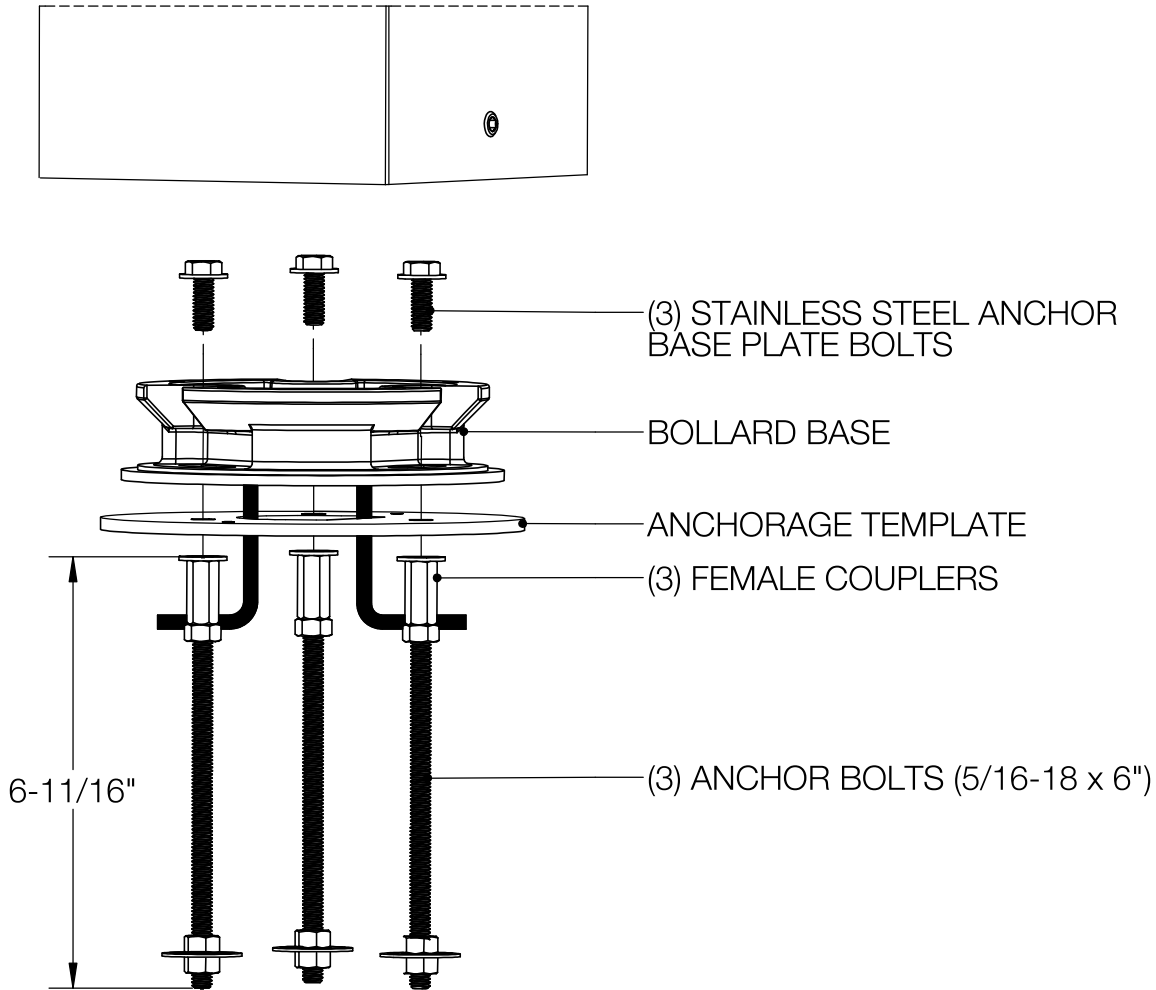
REV	CHANGED BY	DESCRIPTION	DATE



NOTES:
1. INCLUDES: 79817 ANCHOR KIT

BEGA				
1000 BEGA Way, Carpinteria, California 93013			P (805) 684-0533 - www.bega-us.com	
APPROVED: _____ DATE: _____		DESCRIPTION: SHIELDED BOLLARD - ASYMMETRIC WIDE BEAM		
TYPE: _____				
PROPRIETARY AND CONFIDENTIAL THE INFORMATION CONTAINED IN THIS DRAWING IS THE SOLE PROPERTY OF BEGA NORTH AMERICA, INC. ANY REPRODUCTION IN PART OR AS A WHOLE WITHOUT THE WRITTEN PERMISSION OF BEGA NORTH AMERICA, INC. IS PROHIBITED.		SIZE	PART NO.	REV
		B	84220	-
		NOT TO SCALE	11/24/2020	SHEET 1 OF 3

REV	CHANGED BY	DESCRIPTION	DATE



BEGA

1000 BEGA Way, Carpinteria, California 93013 P (805) 684-0533 - www.bega-us.com

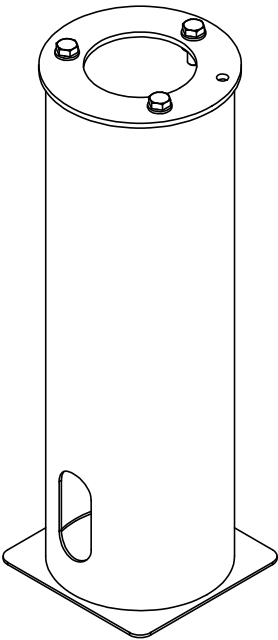
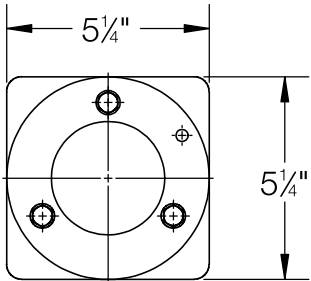
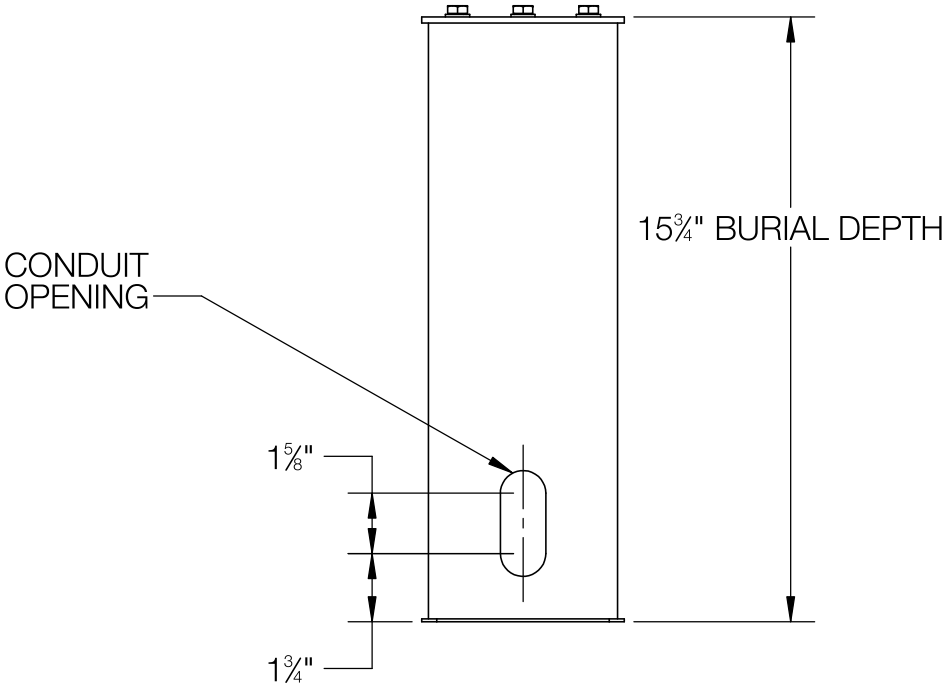
APPROVED: _____ DATE: _____
TYPE: _____

DESCRIPTION:
ANCHORAGE KIT

PROPRIETARY AND CONFIDENTIAL
THE INFORMATION CONTAINED IN THIS DRAWING IS THE SOLE PROPERTY
OF BEGA NORTH AMERICA, INC.
ANY REPRODUCTION IN PART OR AS A WHOLE WITHOUT THE WRITTEN
PERMISSION OF BEGA NORTH AMERICA, INC. IS PROHIBITED.

SIZE B	PART NO. 79817	REV -
NOT TO SCALE	11/24/20	SHEET 2 OF 3

REV	CHANGED BY	DESCRIPTION	DATE



NOTE:
1. 70895 OPTIONAL DIRECT BURIAL ANCHOR KIT

BEGA				
1000 BEGA Way, Carpinteria, California 93013			P (805) 684-0533 - www.bega-us.com	
APPROVED: _____ DATE: _____		DESCRIPTION: DIRECT BURIAL ANCHOR KIT		
TYPE: _____				
PROPRIETARY AND CONFIDENTIAL THE INFORMATION CONTAINED IN THIS DRAWING IS THE SOLE PROPERTY OF BEGA NORTH AMERICA, INC. ANY REPRODUCTION IN PART OR AS A WHOLE WITHOUT THE WRITTEN PERMISSION OF BEGA NORTH AMERICA, INC. IS PROHIBITED.	SIZE B	PART NO. 70895		REV -
	NOT TO SCALE	11/24/20	SHEET 3 OF 3	