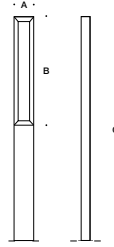


Tools Required:

- 2mm Hex Key
- 2.5mm Hex Key
- 4mm Hex Key
- Special Access door tool (provided)

Overview:

LED Watts: 29.0W
 System Watts: 34.0W
 Controllability: 0-10V dimmable
 Weight: 88.6 lbs.
 Protection Class: IP65



Dimensions

A: 10 5/8"
 B: 73 1/8"
 C: 137 3/4"



Notice to Installer:

- See page 3 for specific product safety warnings.
- 79 802 anchorage kit must be installed in concrete foundation.
 [See Submittal for additional detail]
- See page 2 for 77 140 Anchorage Kit - Direct Bury Installation.
 [See Submittal for additional detail]
- Attention to alignment leveling, and location is required for proper installation.
- The size of the foundation depends on the topography, condition of the soil and the wind load needs to be determined by a structural engineer per-site.

Installation: 79 802 Anchorage Kit - Concrete

1. The protective coating pre-applied to the anchorage unit must not be damaged.
2. Lead the conduit from directly below the anchorage unit 4 1/2" x 2 1/2" opening.
3. A cable length of approximately 5ft above the mounting surface's top edge is sufficient for the electrical connection of the luminaire.
4. Align the rectangular flange plate with the desired luminaire lighting output. Match the corners of the rectangular shaft on the mounting base with the corners of the rectangular linear element [Figure 1]
5. Determine the finished grade for the application; note the fixture does not cover the entire height of the base and mounts above the rectangular extrusion located on the main shaft. [Figure 1] [Figure 2]
6. Insert template kit into poured concrete. Vibrate the concrete to ensure anchorage is entirely level.
7. Use leveling hardware to adjust the template to desired finished height after pouring and complete finished grade.

Installation: 84 221 Luminaire Installation

1. Unlock the fastener of the access door and remove the access door using special tool (provided).
2. Undo 4mm hexagon socket head screws through the openings in the luminaire base.
3. Place luminaire onto anchorage.
4. Tighten hexagon socket screws firmly, Torque = 12 Nm, until screws are secure.
5. Pull supply wiring to access door opening and make supply wiring connections.
MAIN VOLTAGE SUPPLY WIRE TO BLACK WIRE;
NEUTRAL COMMON SUPPLY WIRE TO WHITE WIRE;
GREEN GROUND WIRE TO GREEN WIRE;
Dimming (0-10V):
DIMMING CONTROL WIRE (+) TO (+) [VIOLET] DIM CONTROL WIRE;
DIMMING CONTROL WIRE (-) TO (-) [GRAY] DIM CONTROL WIRE;
6. Replace and lock the access door.

Figure 1: 79 802 Anchorage Details

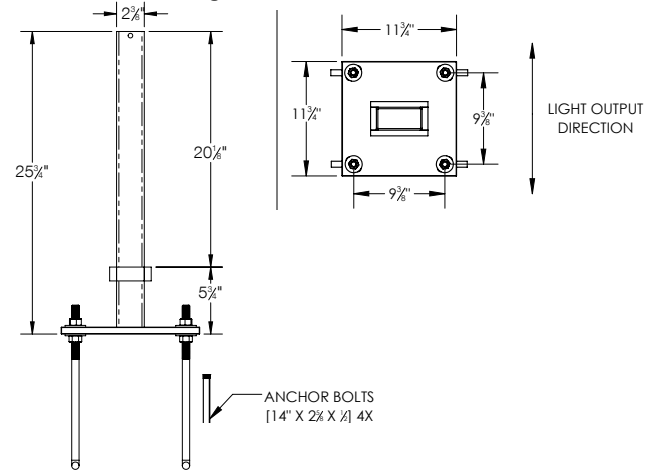
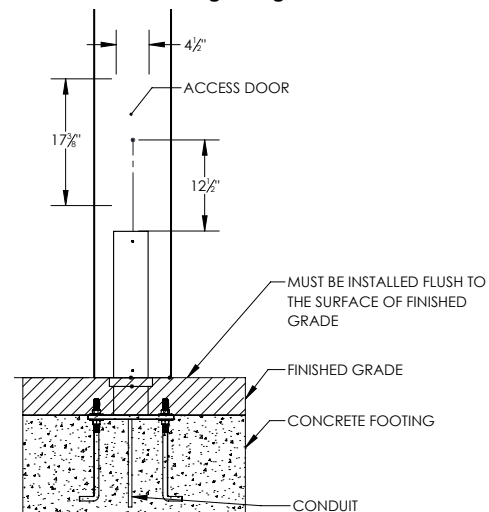


Figure 2: 79 802 Anchorage Diagram



SEE PAGE 2

FOR DIRECT BURY INSTALLATION AND LED ANGLE ADJUSTMENT

Accessories

Please refer to the appropriate accessory installation sheet for further instruction when applicable.

Maintenance:

Clean regularly with solvent-free cleaner removing dirt and debris. Do not use high pressure cleaners.

Replacement Parts

See label inside of fixture for LED replacement part number.

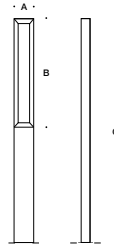
Consult factory for all other replacement components.

Tools Required:

- 2mm Hex Key
- 2.5mm Hex Key
- 3mm Hex Key
- 4mm Hex Key
- Mounting Hardware
- Special Access door tool (provided)

Overview:

LED Watts: 29.0W
 System Watts: 34.0W
 Controllability: 0-10V dimmable
 Weight: 88.6 lbs.
 Protection Class: IP65



Dimensions

A: 10 5/8"
 B: 73 1/8"
 C: 137 3/4"



Notice to Installer:

- See page 3 for specific product safety warnings.
- 79 802 anchorage kit must be installed in concrete foundation. [See Submittal for additional detail]
- Attention to alignment leveling, and location is required for proper installation.
- The size of the foundation depends on the topography, condition of the soil and the wind load needs to be determined by a structural engineer per-site.

Installation: Optional 71 140 direct bury anchorage details

1. The protective coating pre-applied to the anchorage unit must not be damaged.
2. Attach the two-part anchor plate to the main anchorage unit using (2) 3mm hex screws (supplied).
3. Install anchorage onto a level surface using mounting hardware (by others). Ensure proper drainage is available below the base for the specific site and soil conditions.
4. Align the anchorage with the desired luminaire lighting output. Ensure the base is stable and level. [Figure 3]
5. Lead the conduit through the side cable entry of the anchorage unit opening. [Figure 4]
6. A cable length of approximately 5ft above the mounting surface's top edge is sufficient for the luminaire's electrical connection

Installation: 84 221 Luminaire Installation

1. Unlock the fastener of the access door and remove the access door using special tool (provided).
2. Undo 4mm hexagon socket head screws through the openings in the luminaire base.
3. Place luminaire onto anchorage.
4. Tighten hexagon socket screws firmly, Torque = 12 Nm, until screws are secure.
5. Pull supply wiring to access door opening and make supply wiring connections.

**MAIN VOLTAGE SUPPLY WIRE TO BLACK WIRE;
 NEUTRAL COMMON SUPPLY WIRE TO WHITE WIRE;
 GREEN GROUND WIRE TO GREEN WIRE;**

Dimming (0-10V):

**DIMMING CONTROL WIRE (+) TO (+) [VIOLET] DIM CONTROL WIRE;
 DIMMING CONTROL WIRE (-) TO (-) [GRAY] DIM CONTROL WIRE;**

6. Replace and lock the access door.

Installation: Light distribution adjustment

1. LED angle adjustment is factory-set at 0°.
2. For adjustment, to 15° or 30°, undo (4) hexagon socket head screws (2.5mm) in the LED output area and lift-off cover. [Figure 5]
3. Loosen **[DO NOT REMOVE]** the (2) hexagon socket screws (2mm) on both sides of the adjusting device and set the desired beam direction; Tighten the hexagon socket screws. [Figure 5]
4. Insert the cover into the luminaire housing and tighten the screws evenly.

Figure 3: Optional 71 140 direct bury anchorage details

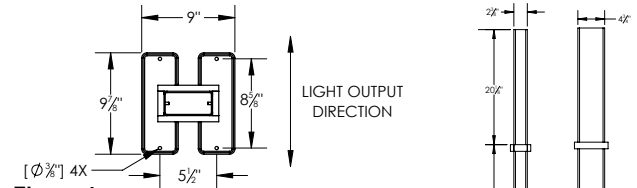


Figure 4: Optional 71 140 direct bury anchorage details

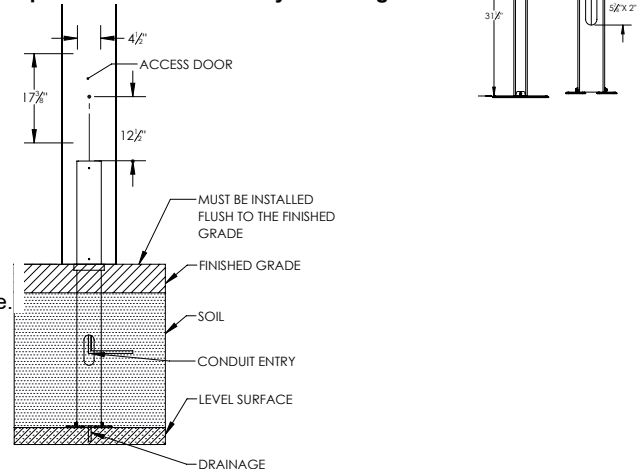
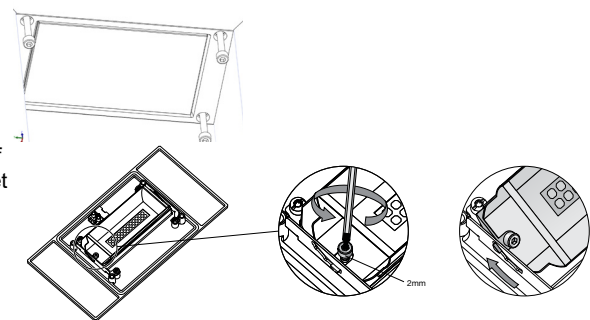


Figure 5: Light distribution adjustment



Accessories

Please refer to the appropriate accessory installation sheet for further instruction when applicable.

Maintenance:

Clean regularly with solvent-free cleaner removing dirt and debris. Do not use high pressure cleaners.

Replacement Parts

See label inside of fixture for LED replacement part number.

Consult factory for all other replacement components.

Product Safety Warnings:

THIS PRODUCT MUST BE INSTALLED IN ACCORDANCE WITH THE APPLICABLE INSTALLATION CODE BY A PERSON FAMILIAR WITH THE CONSTRUCTION AND OPERATION OF THE PRODUCT AND THE HAZARDS INVOLVED. SUITABLE FOR WET LOCATIONS. MIN 90°C SUPPLY CONDUCTORS.

CE PRODUIT DOIT ÊTRE INSTALLÉ SELON LE CODE D'INSTALLATION PERTINENT, PAR UNE PERSONNE QUI CONNAÎT BIEN LE PRODUIT ET SON FONCTIONNEMENT AINSI QUE LES RISQUES INHÉRENTS. CONVIENT AUX EMPLACEMENTS MOUILLÉS.

LES FILS D'ALIMENTATION 90°C MIN.