

REV	CHANGED BY	DESCRIPTION	DATE

Top View Dimensions:

- Width: $11\frac{3}{4}"$
- Height: $11\frac{3}{4}"$
- Distance from center to side holes: $9\frac{3}{8}"$
- Distance from center to top holes: $9\frac{3}{8}"$

Side View Dimensions:

- Width: $2\frac{3}{8}"$
- Height from base to top: $25\frac{3}{4}"$
- Base height: $5\frac{3}{4}"$
- Distance from base to top of mounting plate: $20\frac{1}{8}"$

Labels:

- LIGHT OUTPUT DIRECTION
- ANCHOR BOLTS [14" X 2" X $\frac{1}{2}$] 4X
- ANCHORAGE KIT - CONCRETE 79 802

NOTE:

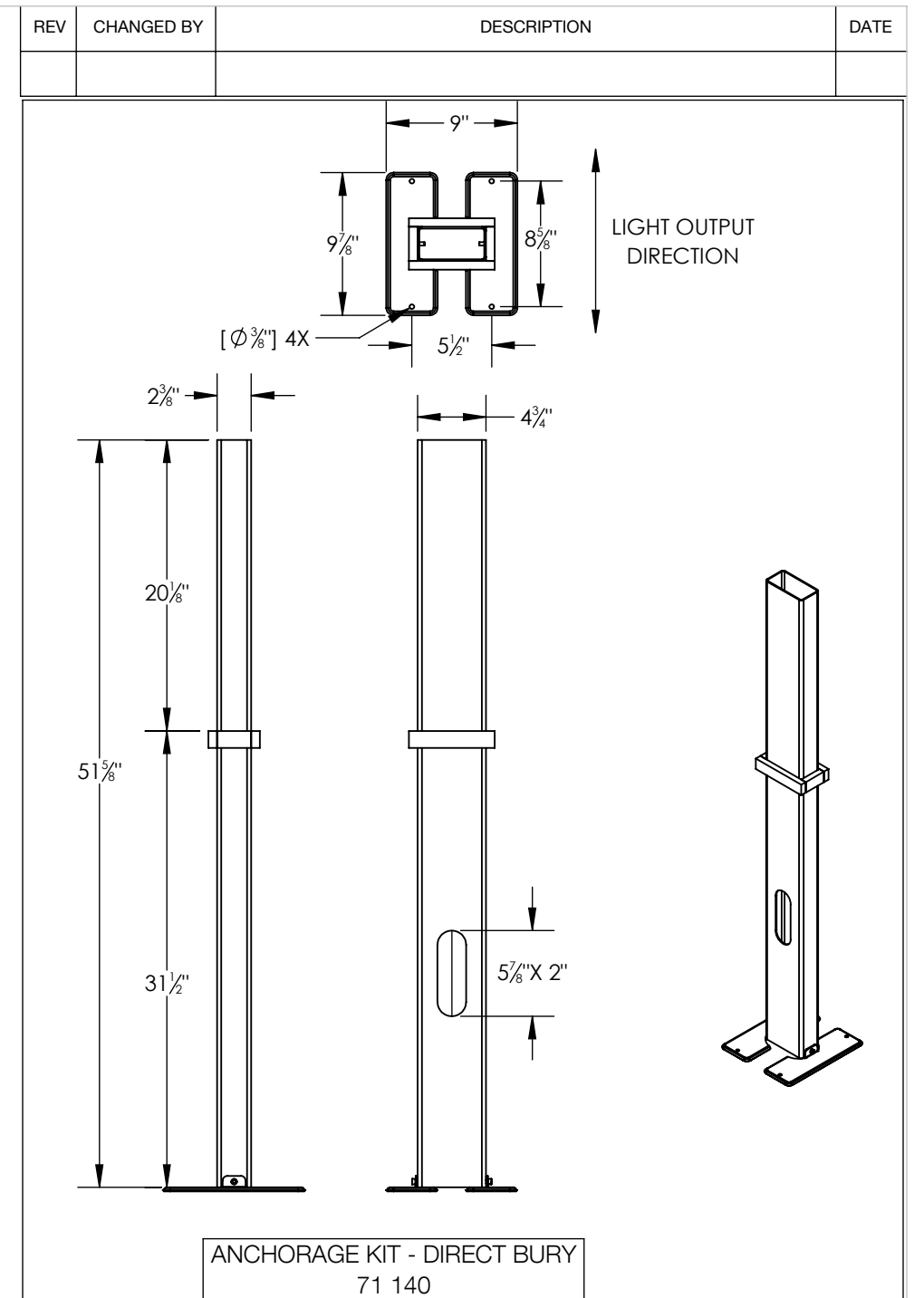
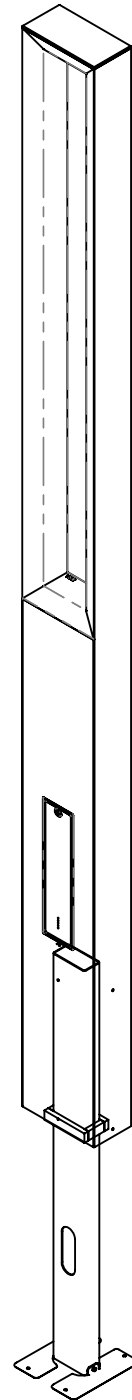
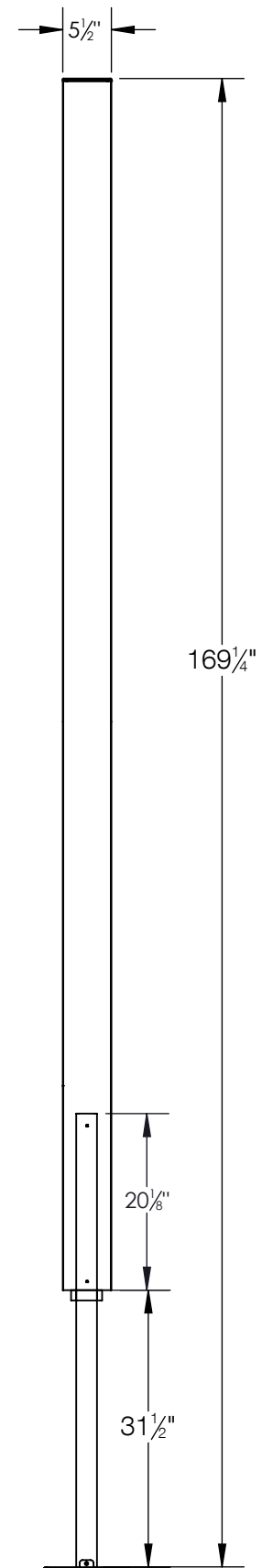
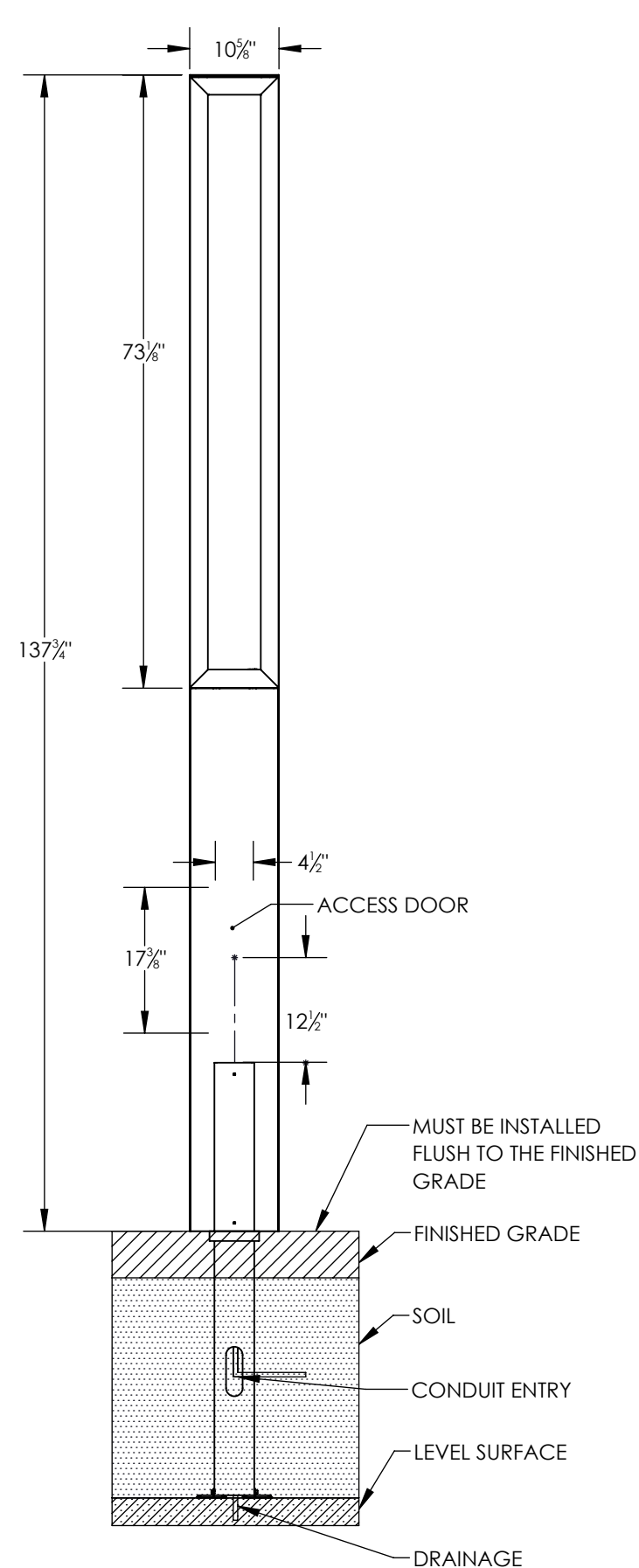
1. THE BASE ORIENTATION MUST BE ALIGNED WITH THE DESIRED LIGHT OUTPUT.

BEGA

1000 BEGA Way, Carpinteria, California 93013 P (805) 684-0533 - www.bega-us.com

APPROVED: _____	DATE: _____	DESCRIPTION: LIGHT BUILDING ELEMENT - ADJUSTABLE DISTRIBUTION
TYPE: _____		

PROPRIETARY AND CONFIDENTIAL THE INFORMATION CONTAINED IN THIS DRAWING IS THE SOLE PROPERTY OF BEGA NORTH AMERICA, INC. ANY REPRODUCTION IN PART OR AS A WHOLE WITHOUT THE WRITTEN PERMISSION OF BEGA NORTH AMERICA, INC. IS PROHIBITED.	SIZE B	PART NO. 84 221	REV -
NOT TO SCALE	4/5/2021	SHEET 1 OF 2	



NOTE:
1. THE BASE ORIENTATION MUST BE ALIGNED WITH THE DESIRED LIGHT OUTPUT.
2. MOUNTING HARDWARE FOR ATTACHING TO CONCRETE BASE NOT PROVIDED

BEGA			
1000 BEGA Way, Carpinteria, California 93013		P (805) 684-0533 - www.bega-us.com	
APPROVED: _____ DATE: _____		DESCRIPTION: LIGHT BUILDING ELEMENT - ADJUSTABLE DISTRIBUTION	
TYPE: _____			
PROPRIETARY AND CONFIDENTIAL THE INFORMATION CONTAINED IN THIS DRAWING IS THE SOLE PROPERTY OF BEGA NORTH AMERICA, INC. ANY REPRODUCTION IN PART OR AS A WHOLE WITHOUT THE WRITTEN PERMISSION OF BEGA NORTH AMERICA, INC. IS PROHIBITED.		SIZE B	PART NO. 84 221
		NOT TO SCALE	REV 4/5/2021 SHEET 2 OF 2