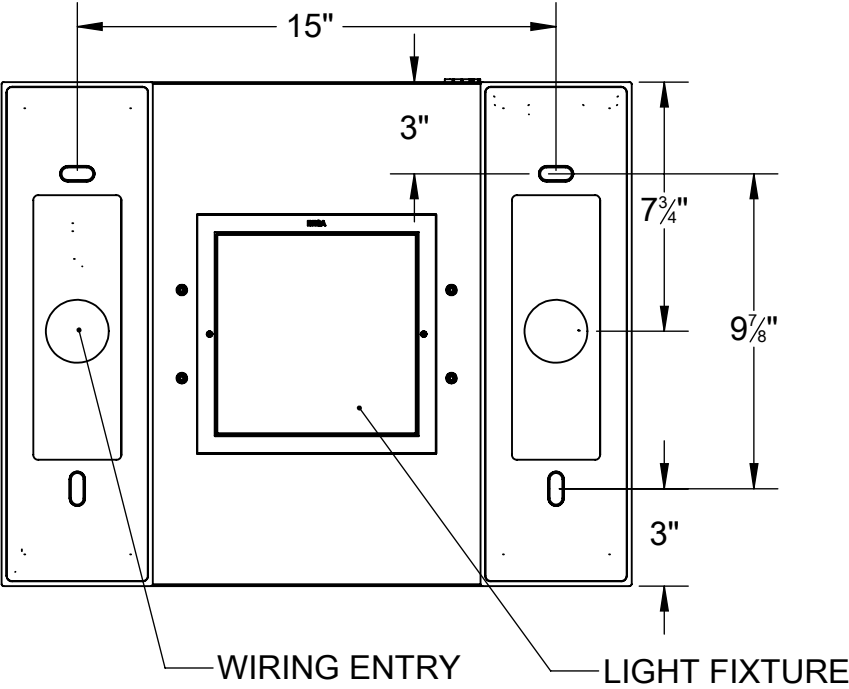
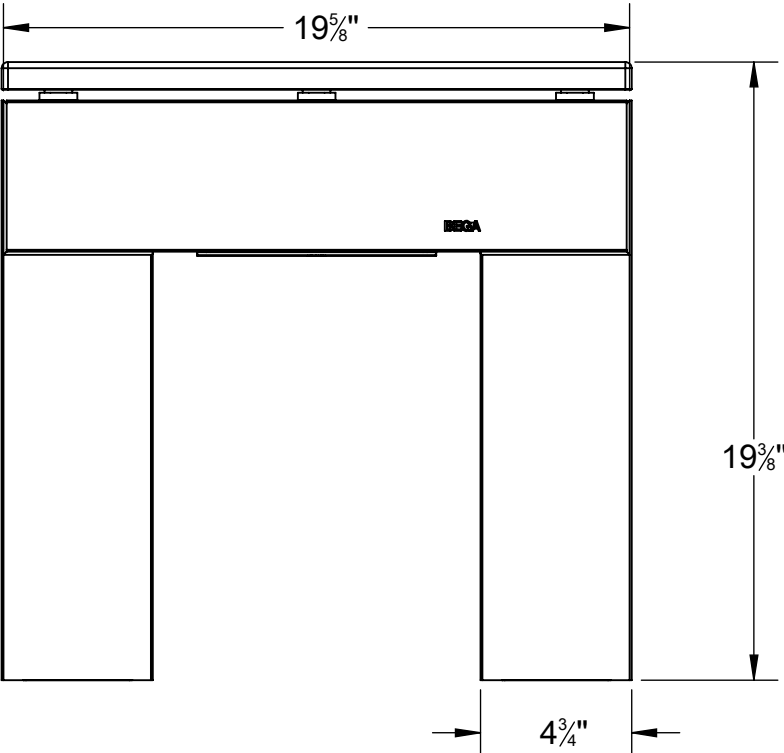


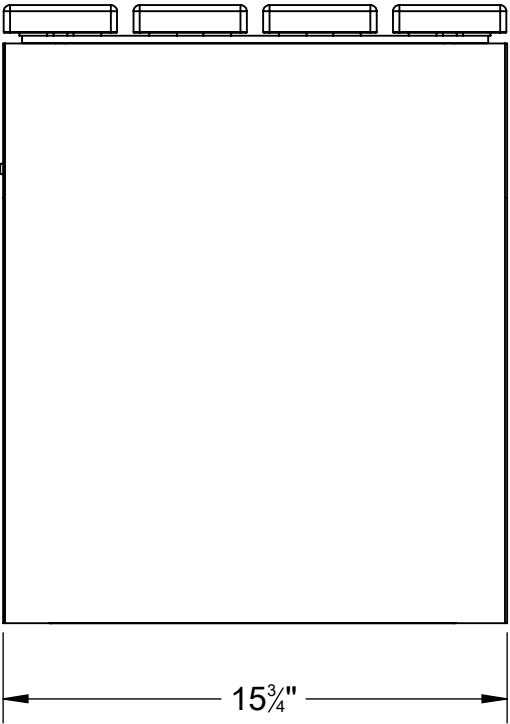
REV	CHANGED BY	DESCRIPTION	DATE



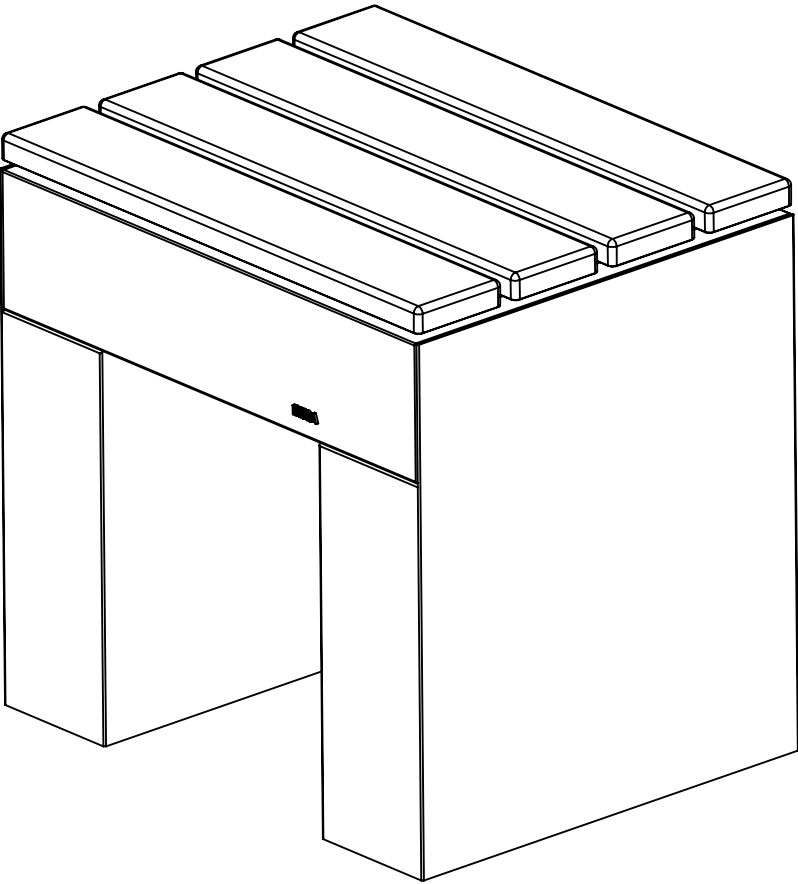
BOTTOM VIEW



FRONT VIEW



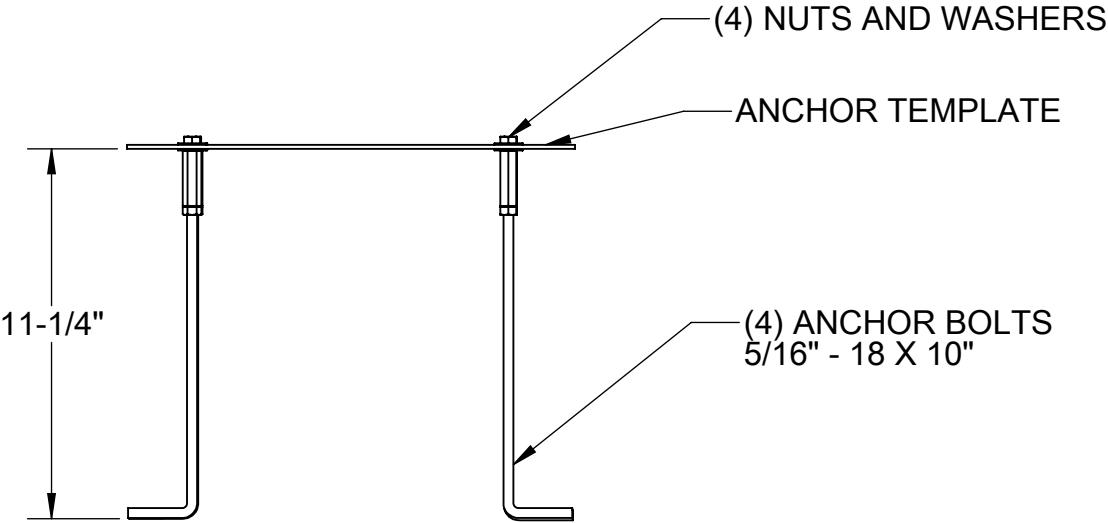
ISOMETRIC VIEW



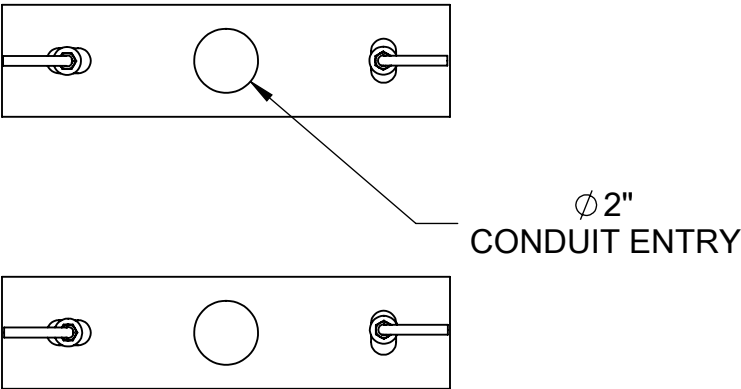
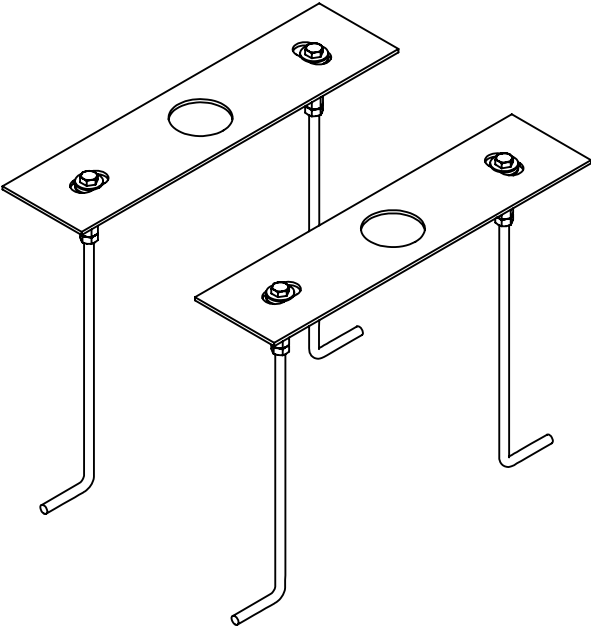
- NOTE:
- 1. INCLUDES 79810 ANCHORAGE KIT
 - 2. (2) MOUNTING BASES INCLUDED WITH STOOL

BEGA				
1000 BEGA Way, Carpinteria, California 93013			P (805) 684-0533 - www.bega-us.com	
APPROVED: _____		DATE: _____		DESCRIPTION:
TYPE: _____				ILLUMINATED STOOL - SYMMETRIC
PROPRIETARY AND CONFIDENTIAL THE INFORMATION CONTAINED IN THIS DRAWING IS THE SOLE PROPERTY OF BEGA NORTH AMERICA, INC. ANY REPRODUCTION IN PART OR AS A WHOLE WITHOUT THE WRITTEN PERMISSION OF BEGA NORTH AMERICA, INC. IS PROHIBITED.		SIZE	PART NO.	REV
		B	84327	-
NOT TO SCALE		9/14/2023	SHEET 1 OF 2	

REV	CHANGED BY	DESCRIPTION	DATE



ISOMETRIC VIEW



BEGA

1000 BEGA Way, Carpinteria, California 93013 P (805) 684-0533 - www.bega-us.com

APPROVED: _____ DATE: _____
TYPE: _____

DESCRIPTION:
ANCHORAGE KIT

PROPRIETARY AND CONFIDENTIAL
THE INFORMATION CONTAINED IN THIS DRAWING IS THE SOLE PROPERTY
OF BEGA NORTH AMERICA, INC.
ANY REPRODUCTION IN PART OR AS A WHOLE WITHOUT THE WRITTEN
PERMISSION OF BEGA NORTH AMERICA, INC. IS PROHIBITED.

SIZE	PART NO.	REV
B	79810	-
NOT TO SCALE	9/14/2023	SHEET 2 OF 2