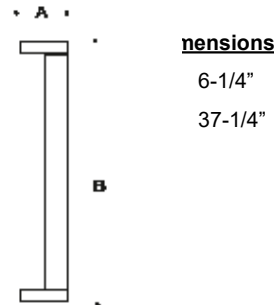


Tools Required:

- 5mm hex head screwdriver
- Adjustable wrench

Overview:

LED Watts: 11.5W
 System Watts: 15.0W
 Controllability: 0-10V, TRIAC, and ELV dimmable
 Weight: 12.8 lbs.
 Protection Class: IP65



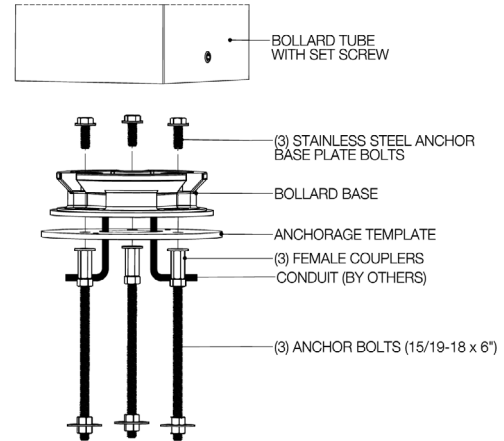
Notice to Installer:

1. See page 2 for specific product safety warnings.
2. Fixture may be damaged if connected to conduit systems that contain water. Article 300-5G of the National Electric Code requires that "Conduits or raceways through which moisture may contact energized live parts shall be sealed or plugged at either or both ends."
3. 79 817 Anchorage Kit (included) must be installed in concrete pad/foundation.
4. It is recommended that when installing in planting areas the base of the bollard be slightly elevated to avoid prolonged submerging during heavy rains.
5. Wet location listing does not imply suitability for exposure to standing water for long periods of time.
6. LEDs are high-quality electronic components! Please avoid touching the light output opening of the LED directly during installation.

Installation: 79 817 Anchorage Kit (included)

1. Provide means to bring supply wiring to the bollard in accordance with local code. See Figure 1 for size the of the conduit entry opening.
 2. Assemble the anchorage kit. Unscrew the (3) base plates bolts from the female couplers and remove each bolt and washer. Align each anchor bolt with the hole in the template. Attach each anchor bolt to the template by replacing the washer and base plate bolt and tightening. Do not remove nuts and washers from bottom of anchor bolt; this provides the pullout force. See Figure 1.
 3. Install anchorage kit using either method:
 - Attach template to forming or cross bracing using the (2) nail holes provided in the template. Level template properly. Pour concrete.
 - Insert anchorage assembly into poured concrete. Concrete must be vibrated to ensure proper anchorage setting. Level template properly.
- NOTE: Allow adequate time for concrete to cure properly.
4. Remove (3) hex base plate bolts and washers once anchorage is set.
 5. Remove template. Smooth concrete pad as required.

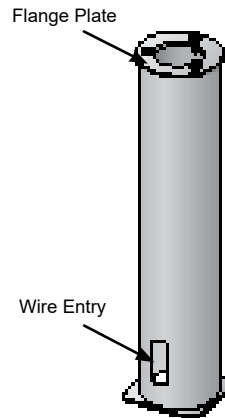
Figure 1: 79817 anchor kit installation:



70895 Direct Burial Anchor Kit Installation:

1. Provide means to bring supply wiring to the conduit entry location per with local code.
2. Prepare soil for anchorage or cast the post in concrete.
3. Make sure anchorage is installed firmly into the ground and mounted level to the surface.
 NOTE: ENSURE THAT THE FLANGE PLATE IS ENTIRELY LEVEL AND FLUSH WITH THE TOP EDGE OF THE SURFACE
4. Remove (3) mounting bolts and washers from the anchorage unit.
5. Align mounting base of the bollard tube, place onto top of anchorage post.
6. Secure by replacing (3) bolts through bollard base, into threaded holes of anchorage flange. Tighten bolts firmly.
7. Skip to step 6 on 84238 luminaire installation (below)

Figure 2: 70895 direct burial anchor installation:



84238 Luminaire Installation:

1. Remove (3) hex bolts and washers, once concrete is cured and anchorage is set. (79817 anchor only)
2. Remove template, making sure that there is a smooth, flat surface to mount the base (79817 anchor only)
3. Loosen the 5mm hex head set screw at the base of the fixture. Turn the base plate and remove from bollard.
4. Align base plate holes with anchorage holes.
5. Bolt the base plate to the anchorage kit using the (3) hex bolts and washers.
6. Make supply wiring connections to wire leads from driver inside the fixture
 MAIN VOLTAGE SUPPLY WIRE TO BLACK DRIVER WIRE;
 NEUTRAL (COMMON) SUPPLY WIRE TO WHITE DRIVER WIRE;
 GREEN GROUND WIRE TO GREEN DRIVER WIRE.
 Dimming (if applicable):
 DIMMING CONTROL WIRE (+) TO POSITIVE DRIVER DIM CONTROL WIRE
 DIMMING CONTROL WIRE (-) TO NEGATIVE DRIVER DIM CONTROL WIRE
7. Place the bollard over the base plate so that the (3) notches in the base plate align with the top. Twist bollard tube to desired orientation.
8. Secure the bollard by tightening the 5mm hex head set screw at the base.

Accessories

Please refer to the appropriate accessory installation sheet for further instruction when applicable.

Maintenance:

Clean regularly with solvent-free cleaner removing dirt and debris. Do not use high pressure cleaners.

Replacement Parts

See label inside of fixture for LED replacement part number.

Consult factory for all other replacement components.

Product Safety Warnings:

THIS PRODUCT MUST BE INSTALLED IN ACCORDANCE WITH THE APPLICABLE INSTALLATION CODE BY A PERSON FAMILIAR WITH THE CONSTRUCTION AND OPERATION OF THE PRODUCT AND THE HAZARDS INVOLVED. SUITABLE FOR WET LOCATIONS. MIN 60°C SUPPLY CONDUCTORS.

CE PRODUIT DOIT ÊTRE INSTALLÉ SELON LE CODE D'INSTALLATION PERTINENT, PAR UNE PERSONNE QUI CONNAÎT BIEN LE PRODUIT ET SON FONCTIONNEMENT AINSI QUE LES RISQUES INHÉRENTS. CONVIENT AUX EMPLACEMENTS MOUILLÉS. LES FILS D'ALIMENTATION 60°C MIN.