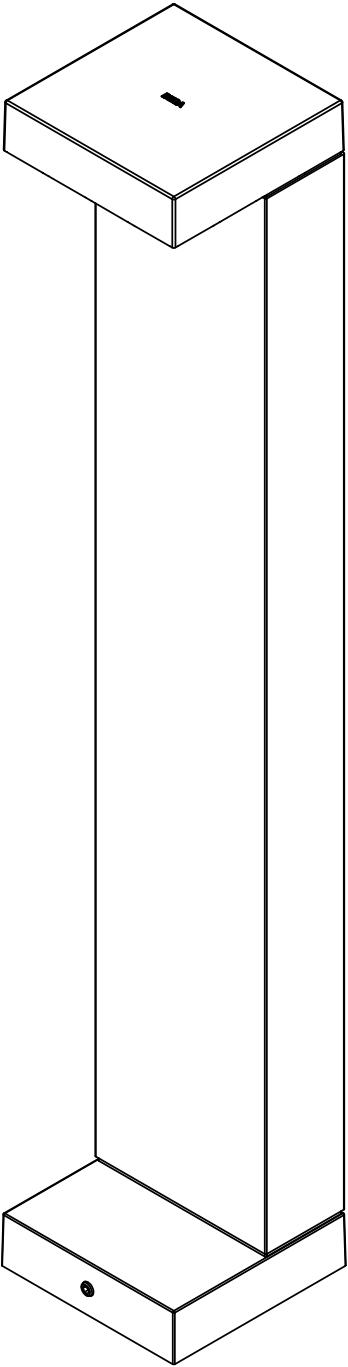


Ø 3 15/16" BOLT CIRCLE

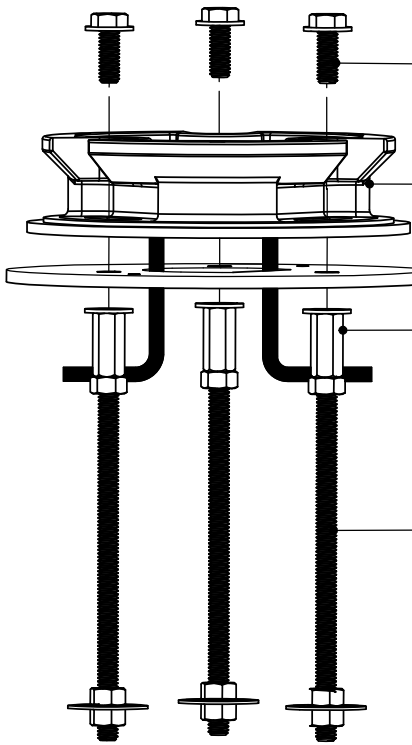
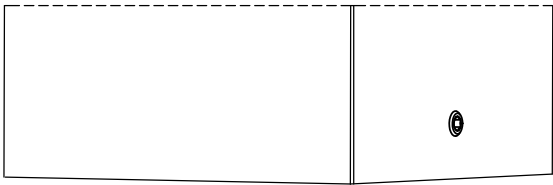
REV	CHANGED BY	DESCRIPTION	DATE



NOTES:
1. INCLUDES: 79817 ANCHOR KIT

BEGA				
1000 BEGA Way, Carpinteria, California 93013			P (805) 684-0533 - www.bega-us.com	
APPROVED: _____		DATE: _____		DESCRIPTION:
TYPE: _____				SHIELDED BOLLARD - ASYMMETRIC
PROPRIETARY AND CONFIDENTIAL THE INFORMATION CONTAINED IN THIS DRAWING IS THE SOLE PROPERTY OF BEGA NORTH AMERICA, INC. ANY REPRODUCTION IN PART OR AS A WHOLE WITHOUT THE WRITTEN PERMISSION OF BEGA NORTH AMERICA, INC. IS PROHIBITED.		SIZE	PART NO.	REV
		B	84238	-
NOT TO SCALE		11/24/2020	SHEET 1 OF 3	

REV	CHANGED BY	DESCRIPTION	DATE



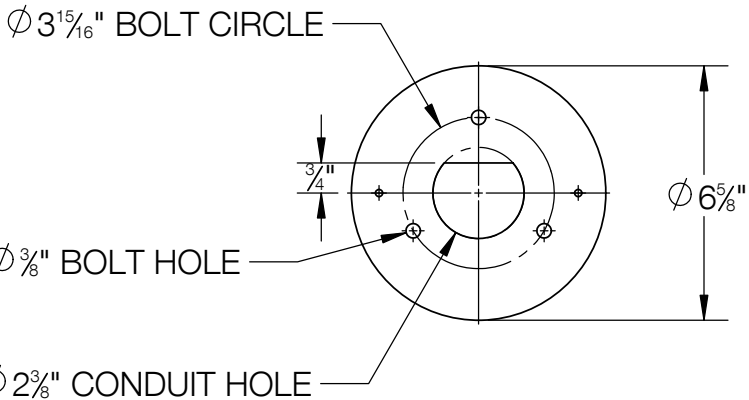
(3) STAINLESS STEEL ANCHOR
BASE PLATE BOLTS

BOLLARD BASE

ANCHORAGE TEMPLATE

(3) FEMALE COUPLERS

(3) ANCHOR BOLTS (15/19-18 x 6")



BEGA

1000 BEGA Way, Carpinteria, California 93013

P (805) 684-0533 - www.bega-us.com

APPROVED: _____ DATE: _____

TYPE: _____

DESCRIPTION:

ANCHORAGE KIT

PROPRIETARY AND CONFIDENTIAL

THE INFORMATION CONTAINED IN THIS DRAWING IS THE SOLE PROPERTY
OF BEGA NORTH AMERICA, INC.
ANY REPRODUCTION IN PART OR AS A WHOLE WITHOUT THE WRITTEN
PERMISSION OF BEGA NORTH AMERICA, INC. IS PROHIBITED.

SIZE

B

PART NO.

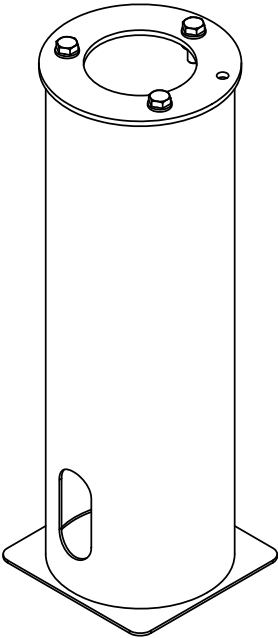
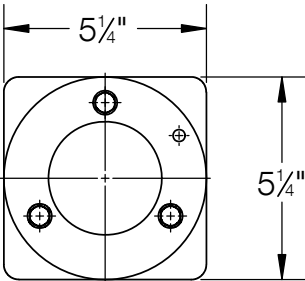
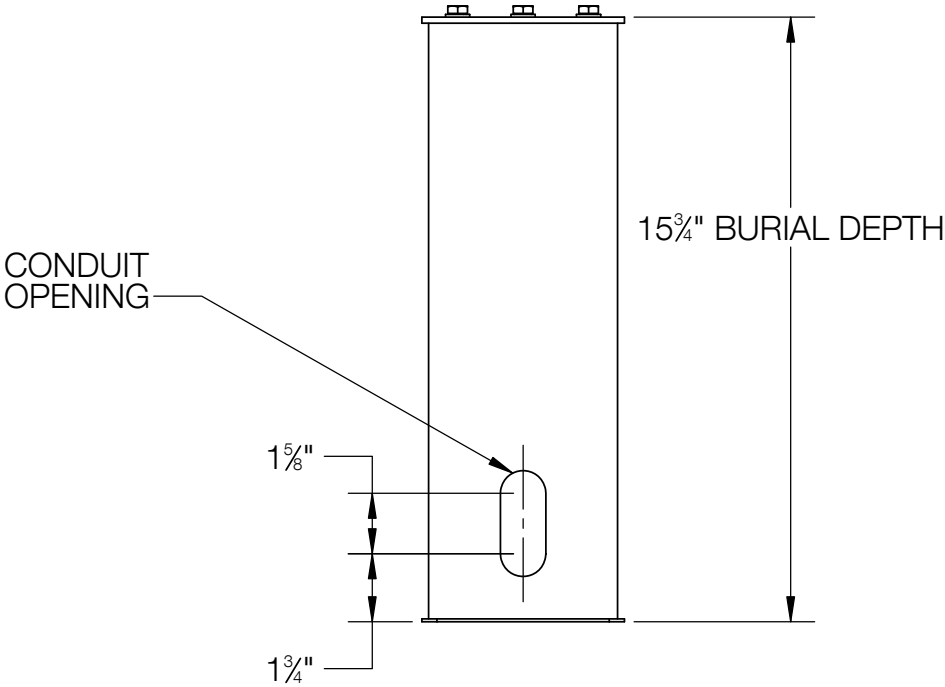
79817

REV

-

NOT TO SCALE 11/24/20 SHEET 2 OF 3

REV	CHANGED BY	DESCRIPTION	DATE



NOTE:
1. 70895 OPTIONAL DIRECT BURIAL ANCHOR KIT

BEGA				
1000 BEGA Way, Carpinteria, California 93013			P (805) 684-0533 - www.bega-us.com	
APPROVED: _____ DATE: _____		DESCRIPTION: DIRECT BURIAL ANCHOR KIT		
TYPE: _____				
PROPRIETARY AND CONFIDENTIAL THE INFORMATION CONTAINED IN THIS DRAWING IS THE SOLE PROPERTY OF BEGA NORTH AMERICA, INC. ANY REPRODUCTION IN PART OR AS A WHOLE WITHOUT THE WRITTEN PERMISSION OF BEGA NORTH AMERICA, INC. IS PROHIBITED.		SIZE	PART NO.	REV
		B	70895	-
		NOT TO SCALE	11/24/20	SHEET 3 OF 3