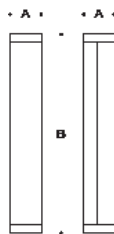


Tools Required:

- 5mm hex head screwdriver
- Adjustable wrench

Overview:

LED Watts: 11.5W
 System Watts: 18.0W
 Controllability: 0-10V, TRIAC, and ELV dimmable
 Weight: 13.9 lbs.
 Protection Class: IP65



Dimensions

A: 7-1/2"
 B: 39-3/8"



STANDARD FIXTURE INSTALLATION (SEE PAGE 2 FOR OPTIONS)

Figure 1:

Notice to Installer:

1. See page 3 for specific product safety warnings.
2. Fixture may be damaged if connected to conduit systems that contain water - Article 300-5G of the National Electric Code requires that "Conduits or raceways through which moisture may contact energized live parts shall be sealed or plugged at either or both ends."
3. 79817 anchorage kit (included) must be installed in concrete pad/foundation.
4. It is recommended that when installing in planting areas the bollard base be slightly elevated to avoid prolonged submerging during heavy rains.
5. Wet location listing does not imply suitability for exposure to standing water for long periods of time.
6. LEDs are high-quality electronic components! Please avoid touching the light output opening of the LED directly during installation.

79817 Anchor Kit Installation:

1. Provide means to bring supply wiring to the bollard in accordance with local code. The template has a 2-3/8" conduit hole for conduit entry.
2. Assemble anchorage kit. Unscrew the (3) hex bolts from the female couplers. Remove each hex bolt and washer. Align each anchor bolt with the hole in the template. Attach each anchor bolt to the template by replacing the washer and hex bolt and tightening. Do not remove nuts and washers from bottom of anchor bolt; this provides the pullout force. See Figure 2.
3. Determine the finished grade for the application. Use leveling hardware to adjust template to desired finished height after pouring.
4. Install anchorage kit using either method:
 - A. Attach template to forming or cross bracing using the (2) nail holes provided in the template. Level template properly. Pour concrete.
 - B. Insert anchorage assembly into poured concrete. Concrete must be vibrated to ensure proper anchorage setting. Level template properly.

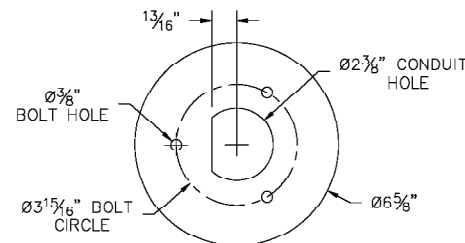
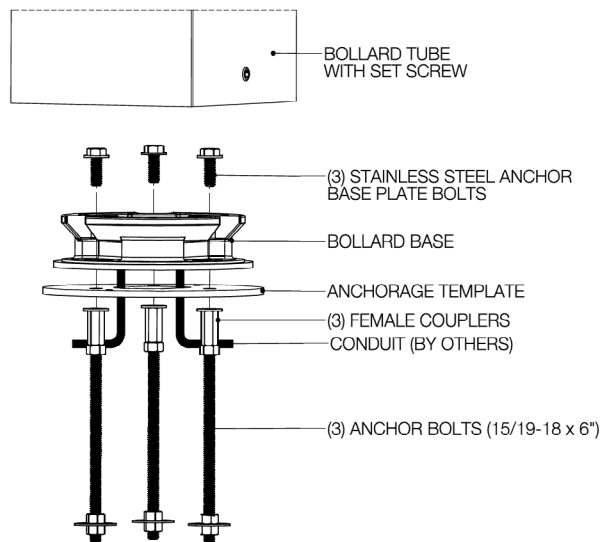


Figure 2:



84239 Luminaire Installation:

1. Remove (3) hex bolts and washers, once anchorage is set.
2. Leave template in place to provide a smooth, flat surface to mount the base.
3. Turn the base plate and remove from bollard, after loosening the 5mm set screw.
4. Align base plate holes with anchorage holes.
5. Bolt the base plate to the anchorage kit using the (3) hex bolts and washers
6. Make supply wiring connections to wire leads from driver inside the fixture
 MAIN VOLTAGE SUPPLY WIRE TO BLACK LUMINAIRE WIRE;
 NEUTRAL (COMMON) SUPPLY WIRE TO WHITE LUMINAIRE WIRE;
 GREEN GROUND WIRE TO GREEN LUMINAIRE WIRE.
 Dimming (if applicable):
 DIMMING CONTROL WIRE (+) TO POSITIVE DRIVER DIM CONTROL WIRE
 DIMMING CONTROL WIRE (-) TO NEGATIVE DRIVER DIM CONTROL WIRE
7. Place the bollard over the base plate so that the (3) notches in the base plate align with the top.
8. Secure the bollard by tightening the 10mm set screw at the base.

Accessories

Please refer to the appropriate accessory installation sheet for further instruction when applicable.

Maintenance:

Clean regularly with solvent-free cleaner removing dirt and debris. Do not use high pressure cleaners.

Replacement Parts

See label inside of fixture for LED replacement part number.

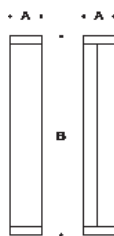
Consult factory for all other replacement components.

Tools Required:

- 5mm hex head screwdriver
- Adjustable wrench

Overview:

LED Watts: 11.5W
 System Watts: 18.0W
 Controllability: 0-10V, TRIAC, and ELV dimmable
 Weight: 13.9 lbs.
 Protection Class: IP65



Dimensions

A: 7-1/2"

B: 39-3/8"



FIXTURE OPTIONAL INSTALLATION METHODS

Notice to Installer:

1. See page 3 for specific product safety warnings.
2. Fixture may be damaged if connected to conduit systems that contain water - Article 300-5G of the National Electric Code requires that "Conduits or raceways through which moisture may contact energized live parts shall be sealed or plugged at either or both ends."
3. It is recommended that when installing in planting areas the bollard base be slightly elevated to avoid prolonged submerging during heavy rains.
4. Wet location listing does not imply suitability for exposure to standing water for long periods of time.
5. LEDs are high-quality electronic components! Please avoid touching the light output opening of the LED directly during installation.

70895 Direct Burial Anchor Kit Installation:

1. Provide means to bring supply wiring to the conduit entry location in accordance with local code.
2. Prepare soil for anchorage or cast the post in concrete.
3. Make sure anchorage is installed firmly into the ground and mounted level to the surface.
NOTE: ENSURE THAT THE FLANGE PLATE IS ENTIRELY LEVEL AND FLUSH WITH THE TOP EDGE OF THE SURFACE
4. Remove (3) mounting bolts and washers from the anchorage unit.
5. Align mounting base of the bollard tube, place onto top of anchorage post.
6. Secure by replacing (3) bolts through bollard base, into threaded holes of anchorage flange. Tighten bolts firmly.
7. Skip to step 6 on 84238 luminaire installation (below)

84239 Luminaire Installation:

1. Remove (3) hex bolts and washers, once anchorage is set.
2. Leave template in place to provide a smooth, flat surface to mount the base.
3. Turn the base plate and remove from bollard, after loosening the 5mm set screw.
4. Align base plate holes with anchorage holes.
5. Bolt the base plate to the anchorage kit using the (3) hex bolts and washers
6. Make supply wiring connections to wire leads from driver inside the fixture
 MAIN VOLTAGE SUPPLY WIRE TO BLACK LUMINAIRE WIRE;
 NEUTRAL (COMMON) SUPPLY WIRE TO WHITE LUMINAIRE WIRE;
 GREEN GROUND WIRE TO GREEN LUMINAIRE WIRE.
 Dimming (if applicable):
 DIMMING CONTROL WIRE (+) TO POSITIVE DRIVER DIM CONTROL WIRE
 DIMMING CONTROL WIRE (-) TO NEGATIVE DRIVER DIM CONTROL WIRE
7. Place the bollard over the base plate so that the (3) notches in the base plate align with the top.
8. Secure the bollard by tightening the 5mm set screw at the base.

84239-EMPK Option Luminaire Installation:

1. Follow steps 1-6 above for 84239 luminaire installation.
2. After installation is complete, supply AC power to the emergency driver and join the converter connection (Figure 2).
3. At this point, power should be connected to both the LED driver and the emergency driver, and the charging indicator light should illuminate indicating the battery is charging. A short-term test may be conducted after the emergency driver has been charged for one hour. Charge for 24 hours before conducting a long-term discharge test.
4. Place the bollard over the base plate so that the (3) notches in the base plate align with the top.
5. Secure the bollard by tightening the 5mm set screw at the base.

Accessories

Please refer to the appropriate accessory installation sheet for further instruction when applicable.

Figure 1:

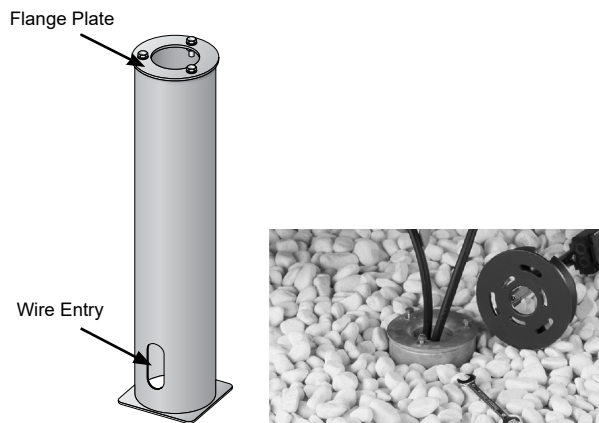
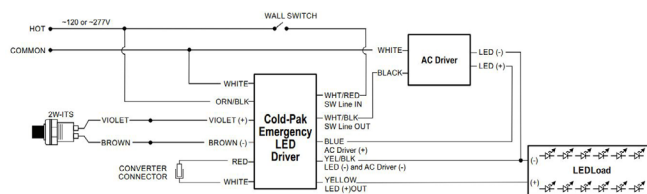


Figure 2:



Maintenance:

Clean regularly with solvent-free cleaner removing dirt and debris. Do not use high pressure cleaners.

Replacement Parts

See label inside of fixture for LED replacement part number.

Consult factory for all other replacement components.

Product Safety Warnings 84 239:

THIS PRODUCT MUST BE INSTALLED IN ACCORDANCE WITH THE APPLICABLE INSTALLATION CODE BY A PERSON FAMILIAR WITH THE CONSTRUCTION AND OPERATION OF THE PRODUCT AND THE HAZARDS INVOLVED. SUITABLE FOR WET LOCATIONS. SUITABLE FOR MOUNTING WITHIN 1.2 m (4ft) OF THE GROUND

MIN 60°C SUPPLY CONDUCTORS.

CE PRODUIT DOIT ÊTRE INSTALLÉ SELON LE CODE D'INSTALLATION PERTINENT, PAR UNE PERSONNE QUI CONNAÎT BIEN LE PRODUIT ET SON FONCTIONNEMENT AINSI QUE LES RISQUES INHÉRENTS. CONVIENT AUX EMPLACEMENTS MOUILLÉS. PEUT ÊTRE INSTALLÉ À MOINS DE 1,2 m (4 pi) DU SOL

LES FILS D'ALIMENTATION 60°C MIN.**Product Safety Warnings 84 239 - EMPK ONLY:**

THIS LUMINAIRE IS PROVIDED WITH A FACTORY-INSTALLED EMERGENCY LIGHTING BATTERY PACK

CSA C22.2 NO. 141, UNIT EQUIPMENT FOR EMERGENCY LIGHTING

CAUTION-This unit has more than one power supply connection point. To reduce the risk of electric shock, disconnect both the branch circuit-breakers or fuses and emergency power supplies before servicing

CAUTION -see instruction manual for installation, operating, and maintenance instructions

CE LUMINAIRE EST ÉQUIPÉ EN USINE D'UNE BATTERIE DES LUMIÈRES D'URGENCE

CSA C22.2 NO. 141 ÉQUIPEMENT POUR UNITÉ D'URGENCE ÉCLAIRAGE

ATTENTION -Cette unité a plus d'un point de connexion d'alimentation. Pour réduire le risque de choc électrique, débranchez les deux succursales disjoncteurs ou des fusibles et des alimentations de secours avant l'entretien

ATTENTION -voir le manuel d'instructions pour des instructions, exploitation, entretien etd'installation