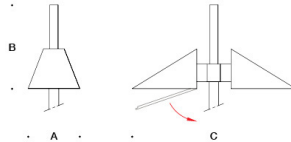


Tools Required:

- 4mm Hex key

Overview:

LED Watts: 47.2W
 System Watts: 60.0W
 Controllability: 0-10V dimmable down to 0.1%
 Weight: 52.4 lbs.
 Protection Class: IP66



Dimensions

A: 13 3/4"
 B: 22 7/8"
 C: 46 7/8"



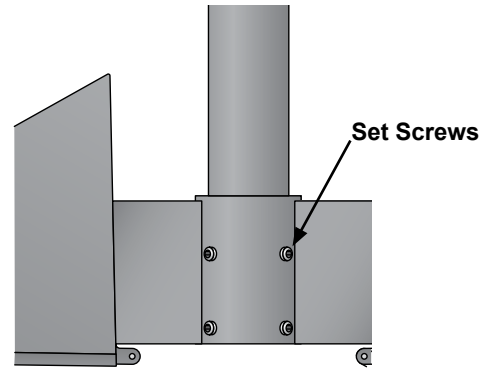
Notice to Installer:

1. See page 2 for specific product safety warnings.
2. For pole top applications only.
3. Slip fits 3" O.D. poles only.
4. For use with tenon or pole insertion depth of 5-3/8" only. Pole inner dimensions 2-3/8" minimum.
5. LED module and integral driver provided by BEGA.
6. Pole top luminaire supplied with 25 feet of cable to route through pole.
7. Fixture should not be opened during installation.

Installation: Luminaire

1. Lead luminaire wires into top of pole, route through pole.
2. Slip luminaire onto top of pole and secure by tightening (8) M8 set screws on pole, evenly (12Nm). [Figure 1]
3. Obtain separately packaged pole-top extension and screw on top of luminaire. Do not overtighten.
4. Make supply wiring and luminaire wiring connections inside pole base:
 MAIN VOLTAGE SUPPLY WIRE TO BLACK LUMINAIRE WIRE
 NEUTRAL (COMMON) SUPPLY WIRE TO WHITE LUMINAIRE WIRE
 GREEN GROUND WIRE TO GREEN LUMINAIRE WIRE
 Dimming (if applicable):
 DIMMING WIRE (+) TO POSITIVE LUMINAIRE DIM CONTROL WIRE
 DIMMING WIRE (-) TO NEGATIVE LUMINAIRE DIM CONTROL WIRE

Figure 1: Mounting Screws



Accessories

Please refer to the appropriate accessory installation sheet for further instruction when applicable.

Maintenance:

Clean regularly with solvent-free cleaner removing dirt and debris. Do not use high pressure cleaners.

Replacement Parts

See label inside of fixture for LED replacement part number.

Consult factory for all other replacement components.

Product Safety Warnings:

THIS PRODUCT MUST BE INSTALLED IN ACCORDANCE WITH THE APPLICABLE INSTALLATION CODE BY A PERSON FAMILIAR WITH THE CONSTRUCTION AND OPERATION OF THE PRODUCT AND THE HAZARDS INVOLVED. SUITABLE FOR WET LOCATIONS. MIN 90°C SUPPLY CONDUCTORS.

CE PRODUIT DOIT ÊTRE INSTALLÉ SELON LE CODE D'INSTALLATION PERTINENT, PAR UNE PERSONNE QUI CONNAÎT BIEN LE PRODUIT ET SON FONCTIONNEMENT AINSI QUE LES RISQUES INHÉRENTS. CONVIENT AUX EMPLACEMENTS MOUILLÉS.

LES FILS D'ALIMENTATION 90°C MIN.