

Application

Twin pole-top luminaire with asymmetric wide beam light distribution. Designed to illuminate roadways, squares, driveways and pedestrian areas while meeting full cutoff requirements.

Materials

Clear safety glass with optical texture
A380 aluminum alloy
High temperature silicone gasket
Pure anodized aluminum reflector

NRTL listed to North American Standards, suitable for wet locations
Protection class IP 66

Weight: 52.4 lbs.

EPA (Effective projection area): 2.6 sq. ft.

Electrical

Operating voltage 120-277VAC
Minimum start temperature -30° C
LED module wattage 47.2W
System wattage 60.0W
Controllability 0-10V dimmable
Color rendering index Ra > 80
Luminaire lumens 7340 lm
LED service life (L70) 60000 hrs

LED color temperature

4000K (K4)
3500K (K35)
3000K (K3)
2700K (K27)

BEGA can supply you with suitable LED replacement modules for up to 20 years after the purchase of LED luminaires - see website for details

Finish

All BEGA standard finishes are matte, textured powder coat with minimum 3 mil thickness. BEGA Unidure® finish provides superior fade protection in Black, Bronze, and Silver. BEGA standard White is a super durable polyester powder. Optionally available RAL, custom, and premium colors provided in polyester powder and/or liquid paint.

Available colors

Black (BLK) Bronze (BRZ)
Silver (SLV) White (WHT)
RAL: CUS:

Type:

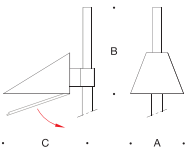
BEGA Product:

Project:

Modified:

Available options

CUS Custom finish
DALI-2 Digital addressable lighting interface
FSC Fusing
MGU Marine grade undercoat
RAL RAL finish



Pole-top luminaire · Asymmetric wide beam · Twin

	LED	A	B	C
B84243	47.2W	13 ³ / ₄	22 ⁷ / ₈	46 ⁷ / ₈

