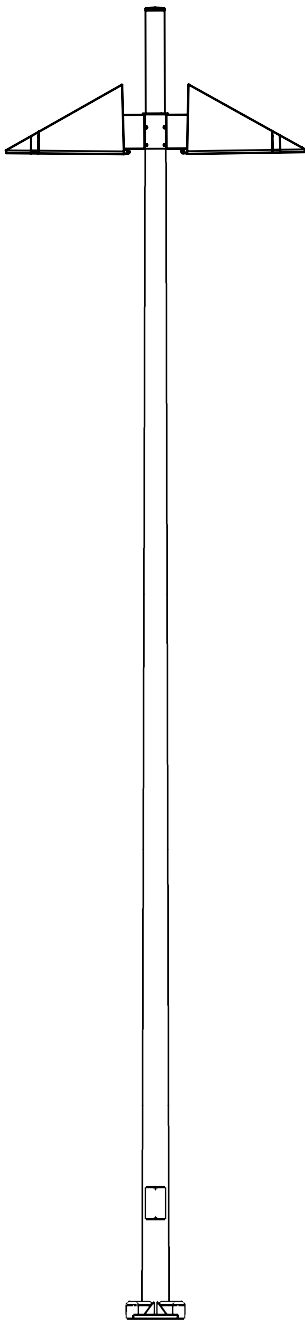
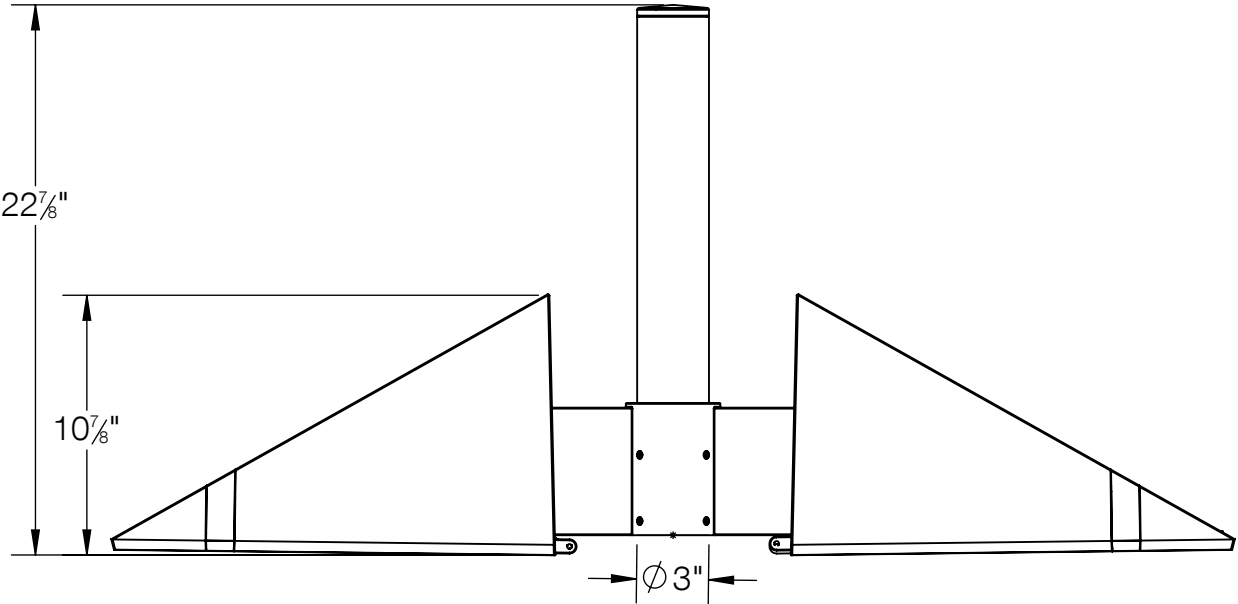


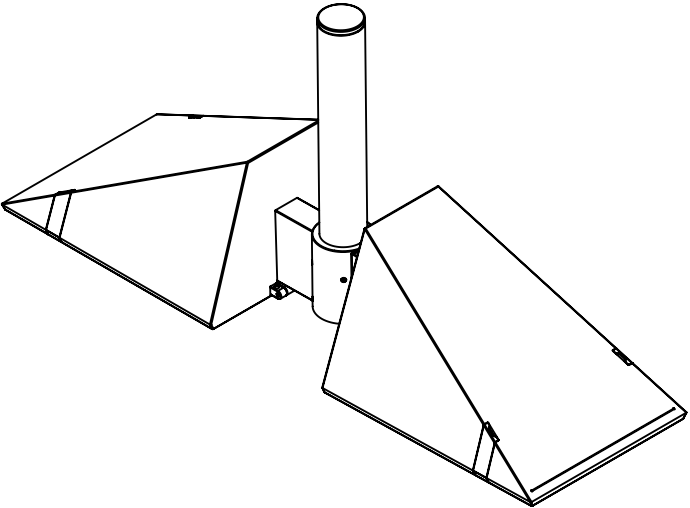
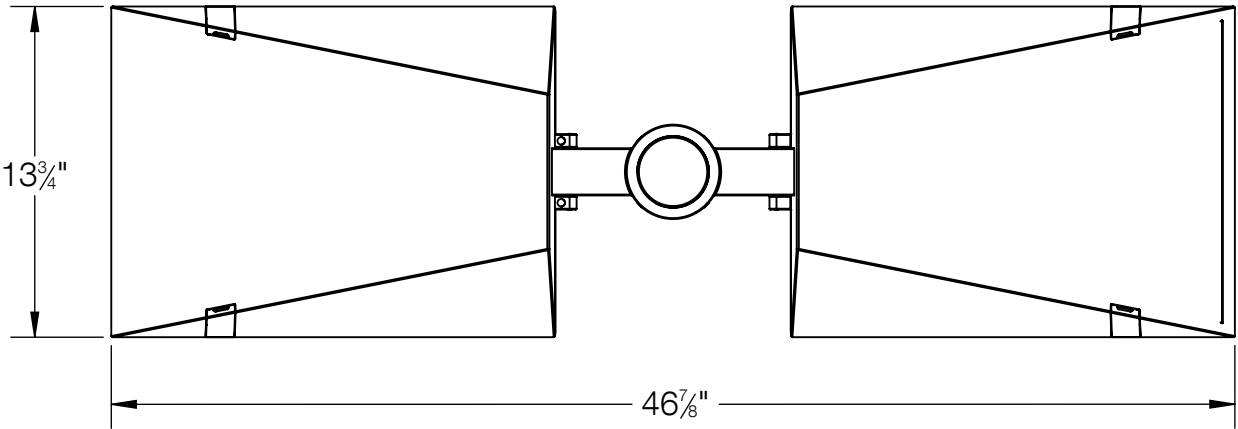
REV	CHANGED BY	DESCRIPTION	DATE



SHOWN ON BEGA POLE 16RFTS1  
(NOT TO SCALE)



NOTE: TENON OR POLE INSERTION  
DEPTH OF 5-3/8" REQUIRED FOR  
PROPER INSTALLATION



**BEGA**

1000 BEGA Way, Carpinteria, California 93013 P (805) 684-0533 - [www.bega-us.com](http://www.bega-us.com)

APPROVED: _____ DATE: _____	DESCRIPTION: Pole-top luminaire -
TYPE: _____	Asymmetric wide beam - Twin

PROPRIETARY AND CONFIDENTIAL <small>THE INFORMATION CONTAINED IN THIS DRAWING IS THE SOLE PROPERTY OF BEGA NORTH AMERICA, INC. ANY REPRODUCTION IN PART OR AS A WHOLE WITHOUT THE WRITTEN PERMISSION OF BEGA NORTH AMERICA, INC. IS PROHIBITED.</small>			SIZE	PART NO.	REV
			B	84 243	-
NOT TO SCALE			08/24/2022	SHEET 1 OF 1	