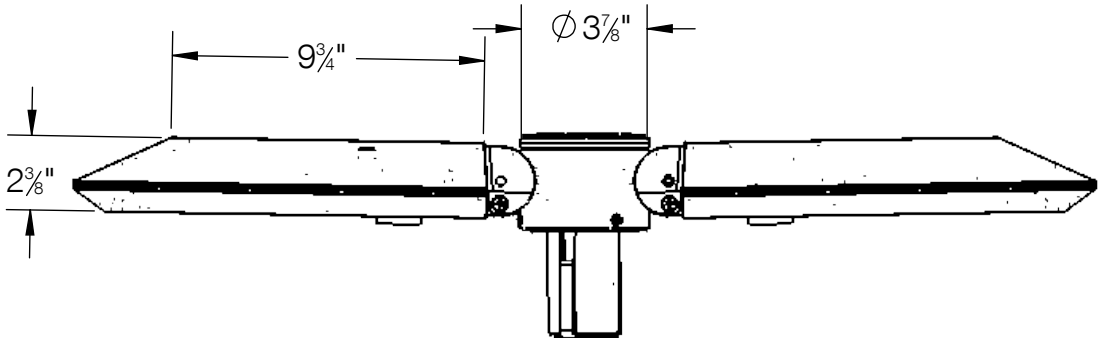
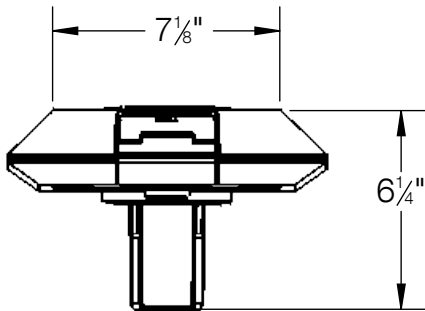
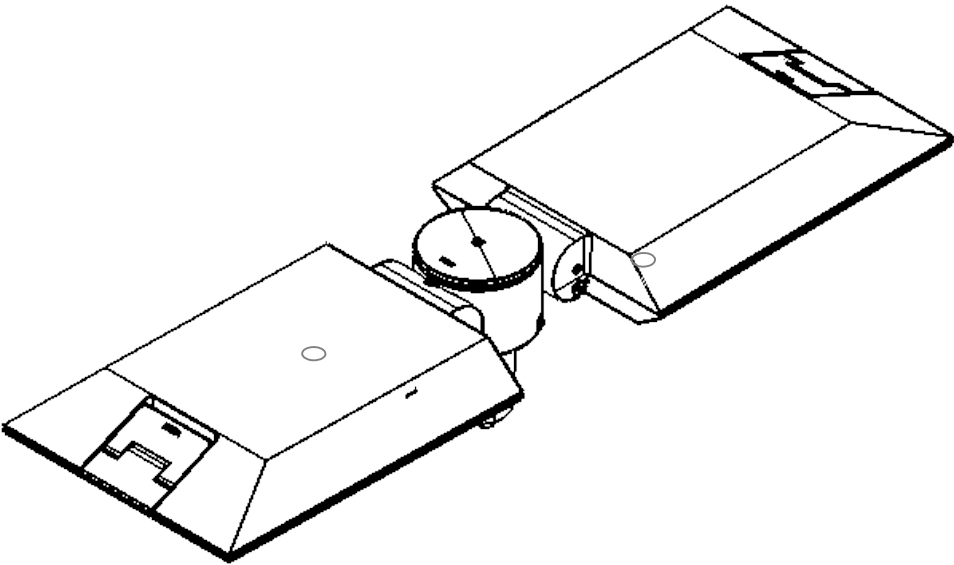
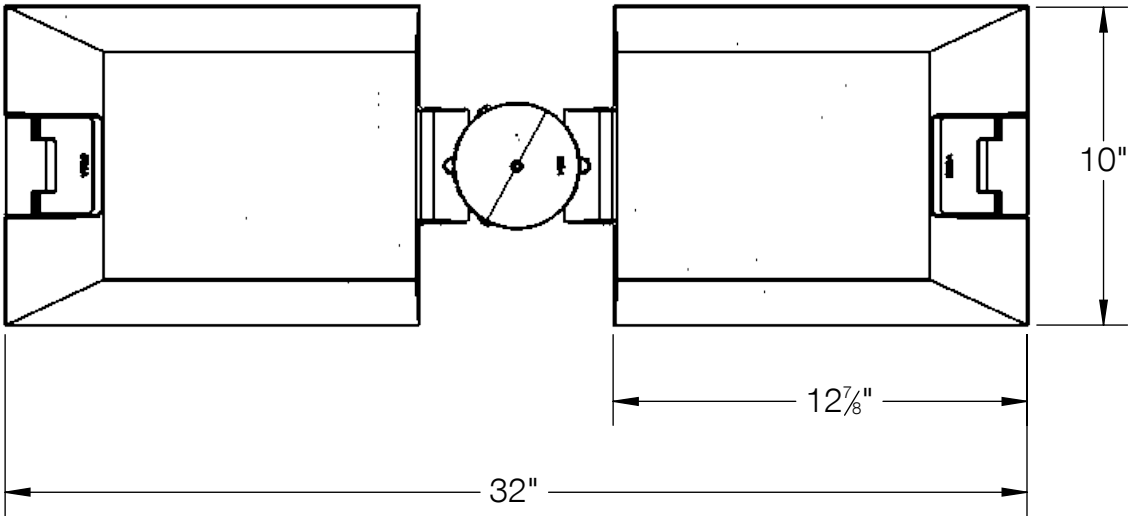


REV	CHANGED BY	DESCRIPTION	DATE

NOTE:

- 1. LUMINAIRE SLIP-FITS OVER 3" O.D. POLES,
- 2. MINIMUM INNER DIMENSION OF 2-1/2"
- 3. MAXIMUM INNER DIMENSION OF 2-3/4"
- 4. SLIP FITTER INSERTION DEPTH OF 3-1/2"



BEGA

1000 BEGA Way, Carpinteria, California 93013		P (805) 684-0533 - www.bega-us.com		
APPROVED: _____ DATE: _____		DESCRIPTION: AREA/ROADWAY LUMINAIRE ASYMMETRIC - TWIN		
TYPE: _____				
PROPRIETARY AND CONFIDENTIAL THE INFORMATION CONTAINED IN THIS DRAWING IS THE SOLE PROPERTY OF BEGA NORTH AMERICA, INC. ANY REPRODUCTION IN PART OR AS A WHOLE WITHOUT THE WRITTEN PERMISSION OF BEGA NORTH AMERICA, INC. IS PROHIBITED.		SIZE	PART NO.	REV
		B	84 253	-
		NOT TO SCALE	8/31/2022	SHEET 1 OF 1