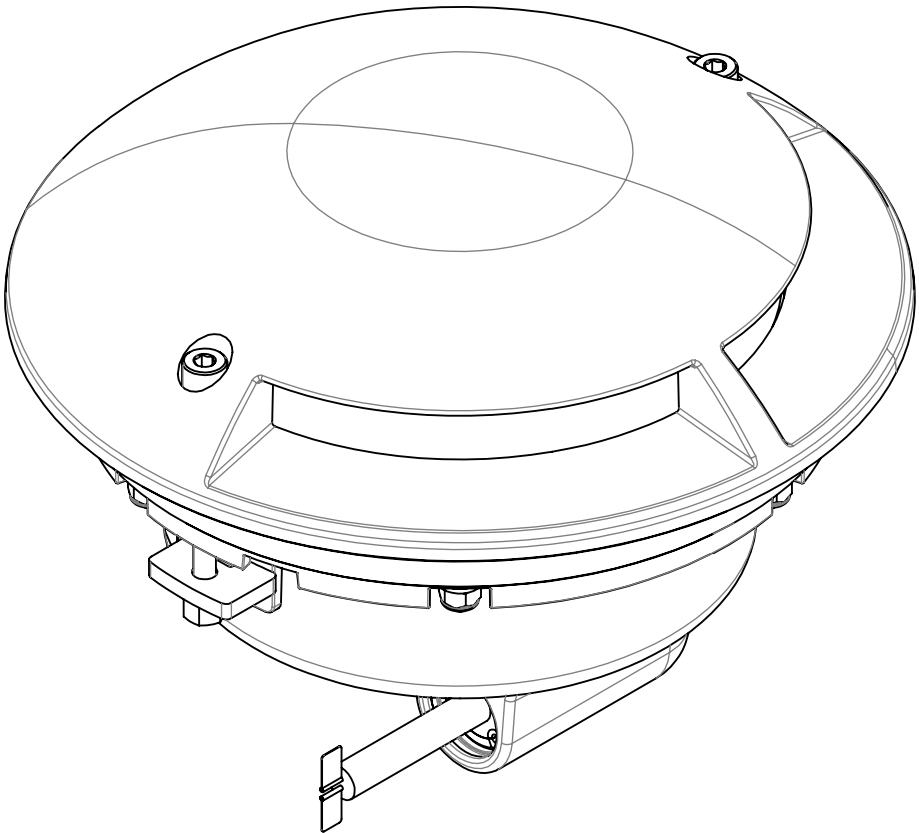
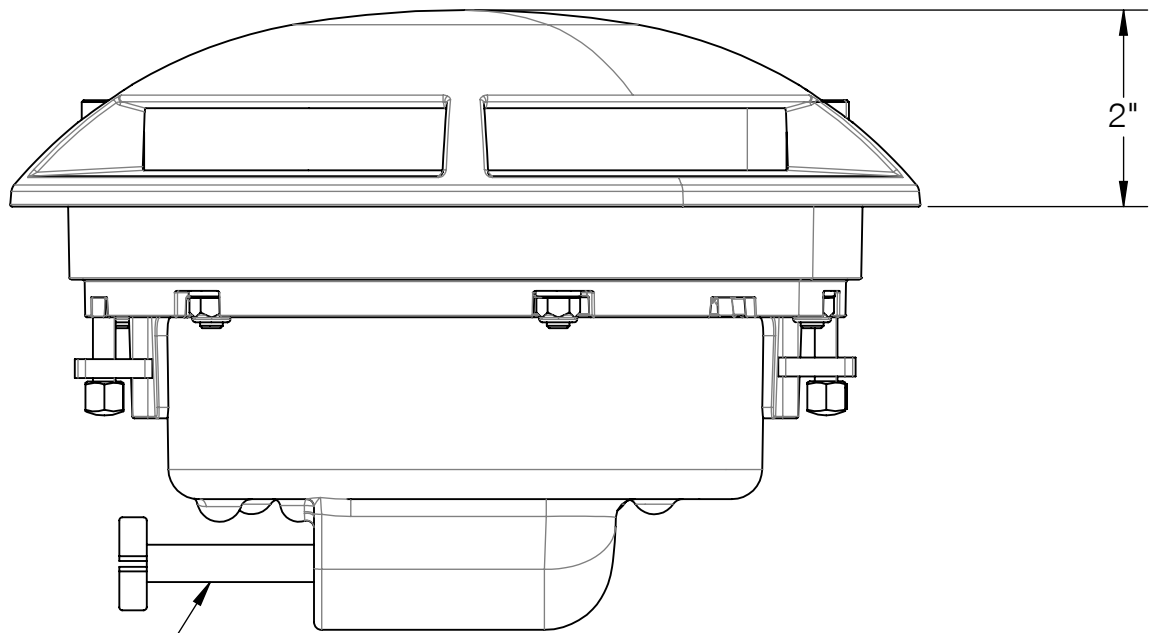
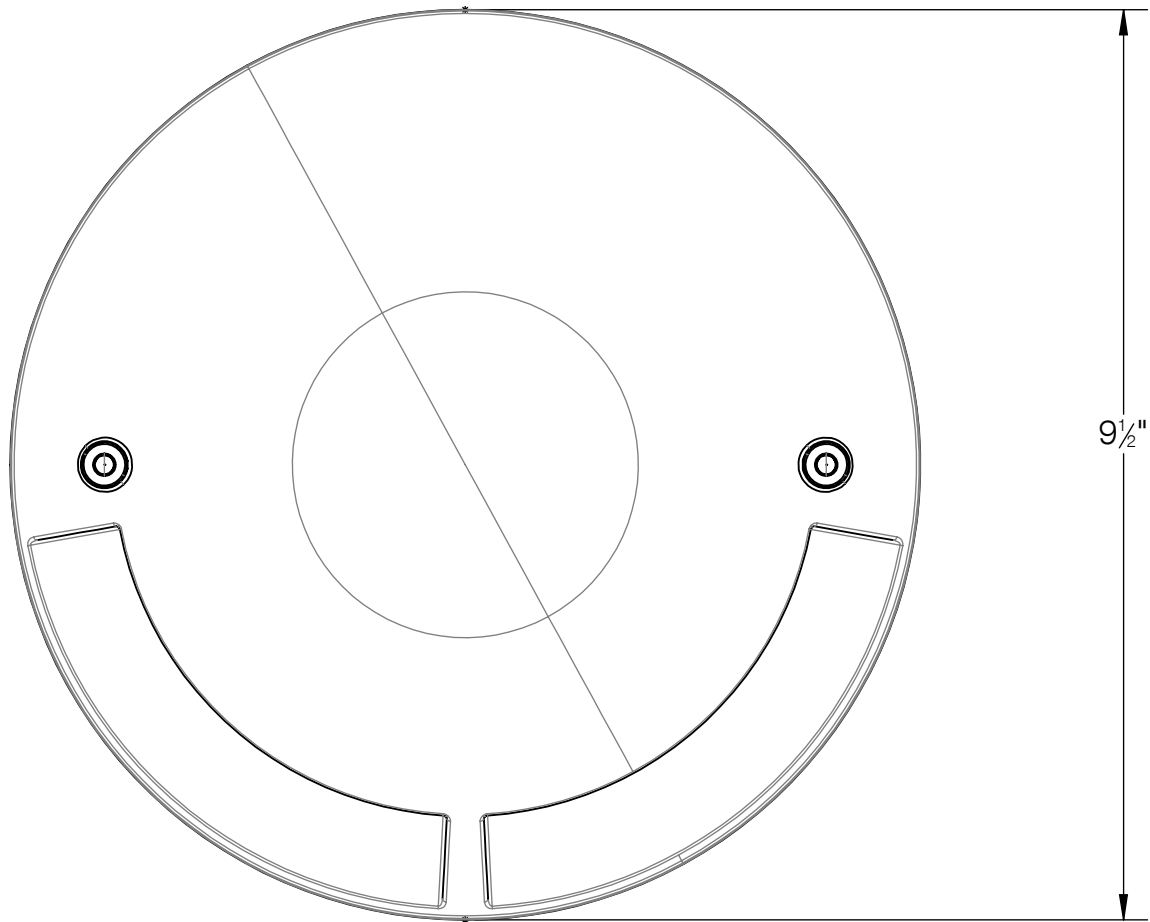


REV	CHANGED BY	DESCRIPTION	DATE



- NOTE:
- 1. INCLUDES KIT #76 - WATERPROOF CONNECTOR KIT
 - 2. INCLUDES BB84454 - INSTALLATION HOUSING

BEGA

1000 BEGA Way, Carpinteria, California 93013 P (805) 684-0533 - www.bega-us.com

APPROVED: _____ DATE: _____
TYPE: _____

DESCRIPTION: IN-GRADE LUMINAIRE -
TWIN 90° PORTS

PROPRIETARY AND CONFIDENTIAL
THE INFORMATION CONTAINED IN THIS DRAWING IS THE SOLE PROPERTY
OF BEGA NORTH AMERICA, INC.
ANY REPRODUCTION IN PART OR AS A WHOLE WITHOUT THE WRITTEN
PERMISSION OF BEGA NORTH AMERICA, INC. IS PROHIBITED.

SIZE	PART NO.	REV
B	84269	-

NOT TO SCALE 6/16/2021 SHEET 1 OF 2

PROVIDED WITH 7.5' OF
WATERPROOF CABLE

REV	CHANGED BY	DESCRIPTION	DATE

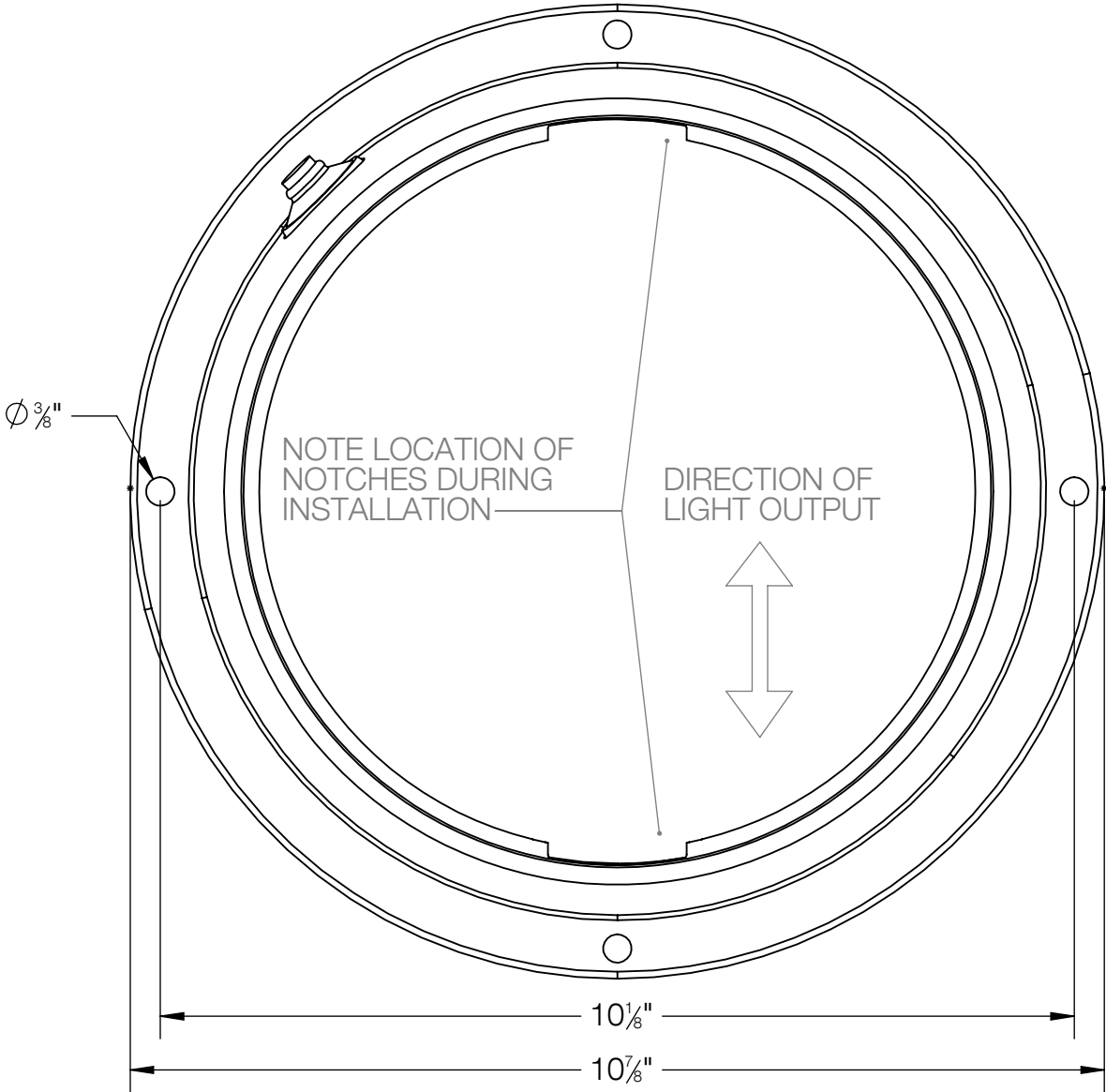
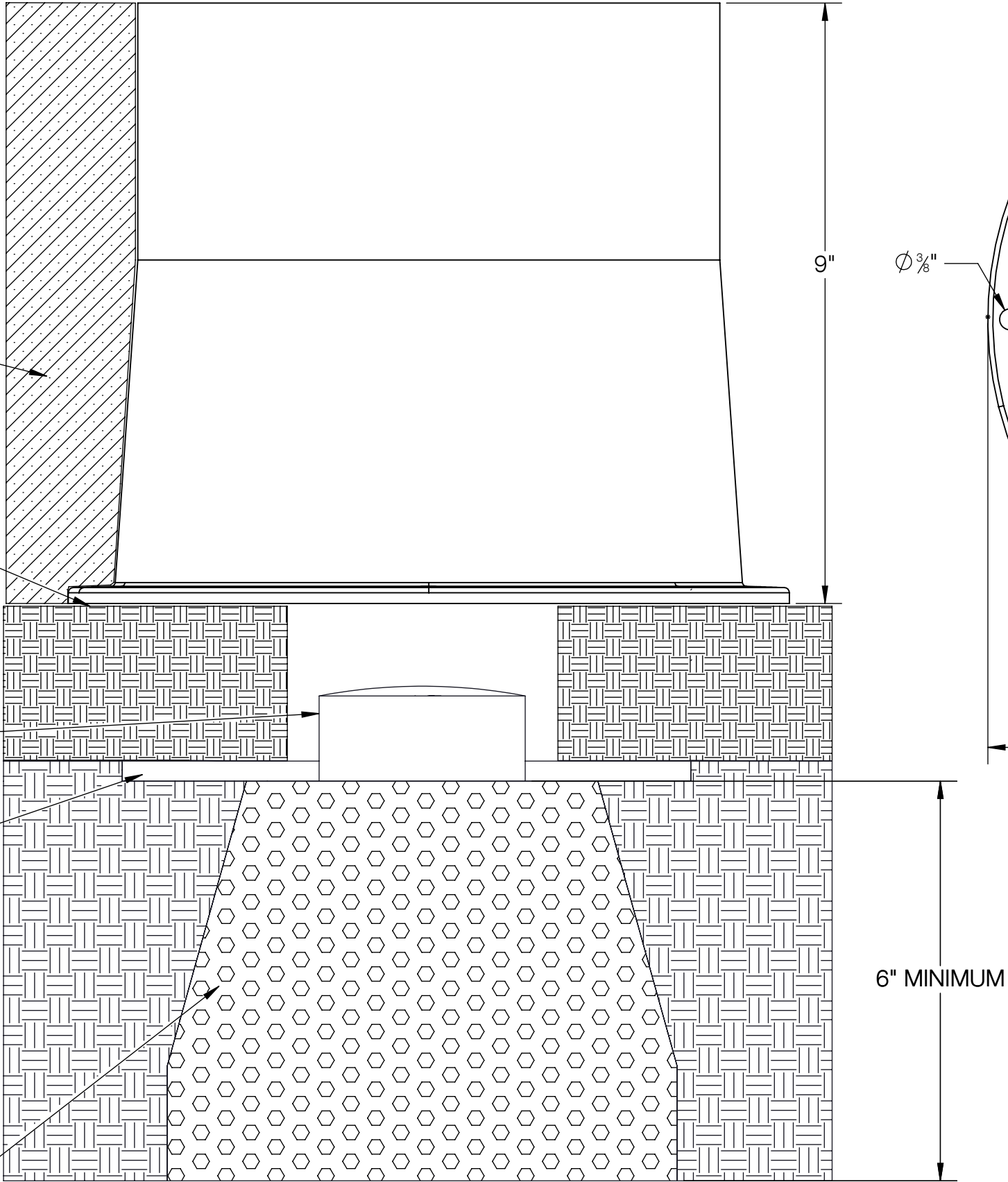
SUITABLE FOR
CONCRETE
INSTALLATION

LEVEL SURFACE
MUST BE
PROVIDED

WATERPROOF J-BOX
(BY OTHERS)
MINIMUM 4"
RECOMMENDED BELOW
FIXTURE FOR CABLE AND
JUNCTION BOX

CONDUIT

PROVIDE A MINIMUM OF
6" OF PEA GRAVEL TO
MAINTAIN PROPER
DRAINAGE
NOTE: MORE GRAVEL
MAY BE REQUIRED IN
AREAS THAT HAVE POOR
SOIL DRAINAGE AND/OR
ARE SUBJECT TO
FREEZING



BEGA

1000 BEGA Way, Carpinteria, California 93013

P (805) 684-0533 - www.bega-us.com

APPROVED: _____ DATE: _____

TYPE: _____

DESCRIPTION:

INSTALLATION HOUSING

PROPRIETARY AND CONFIDENTIAL

THE INFORMATION CONTAINED IN THIS DRAWING IS THE SOLE PROPERTY
OF BEGA NORTH AMERICA, INC.
ANY REPRODUCTION IN PART OR AS A WHOLE WITHOUT THE WRITTEN
PERMISSION OF BEGA NORTH AMERICA, INC. IS PROHIBITED.

SIZE

B

PART NO.

BB84454

REV

-

NOT TO SCALE

6/16/2021

SHEET 2 OF 2