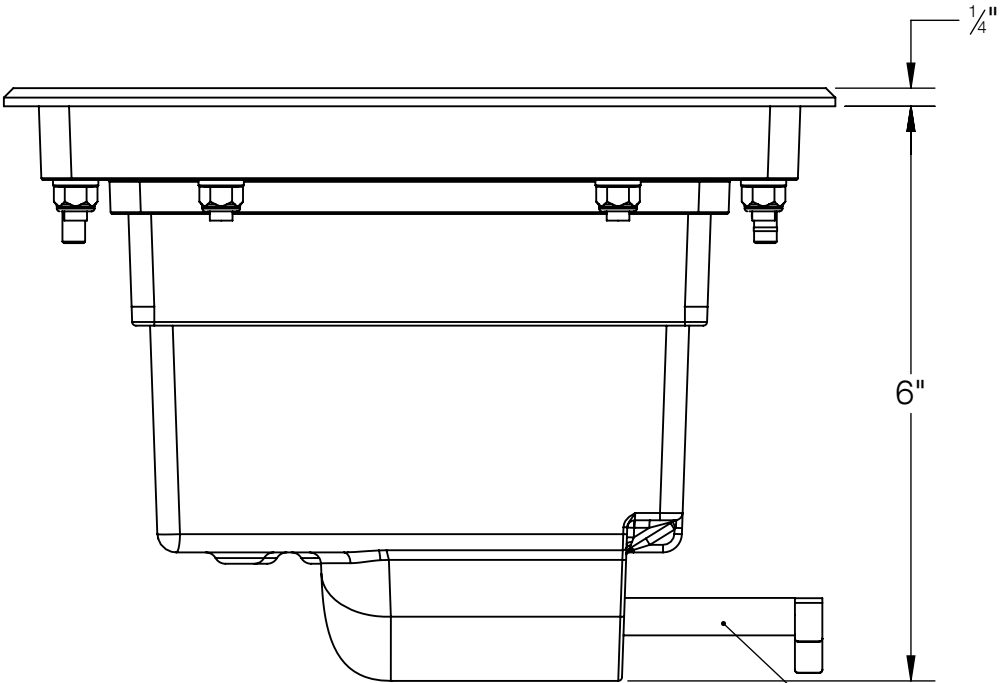
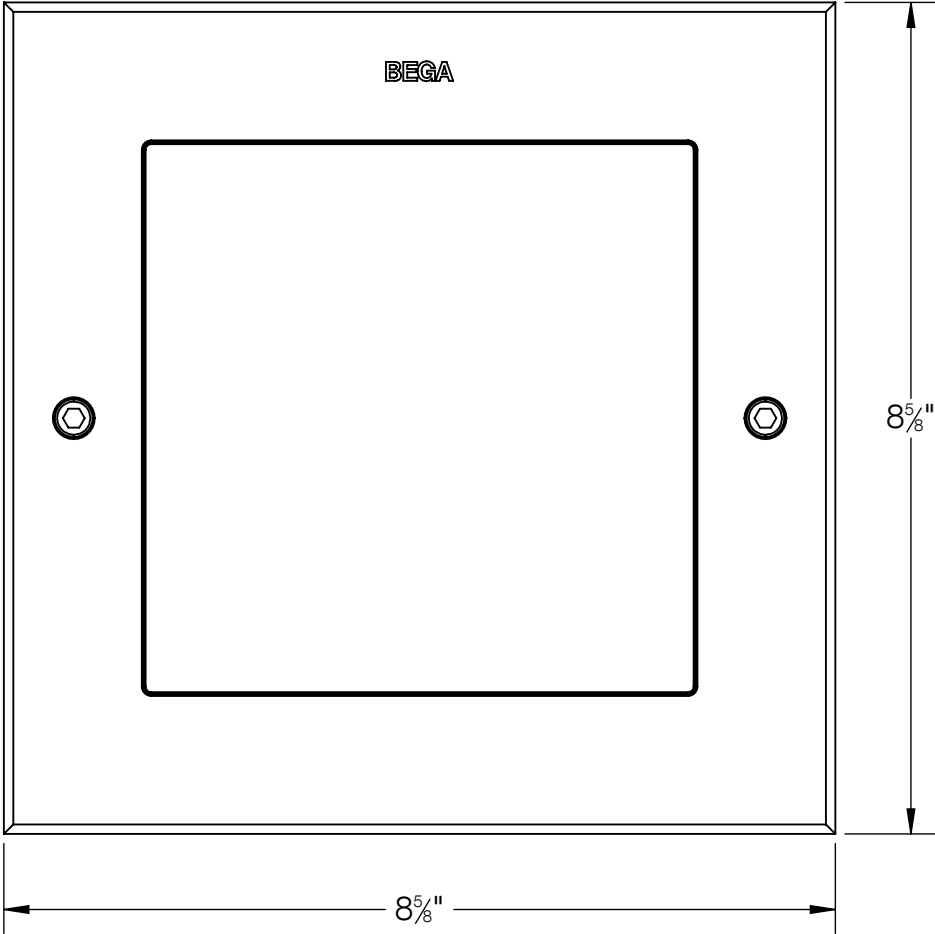
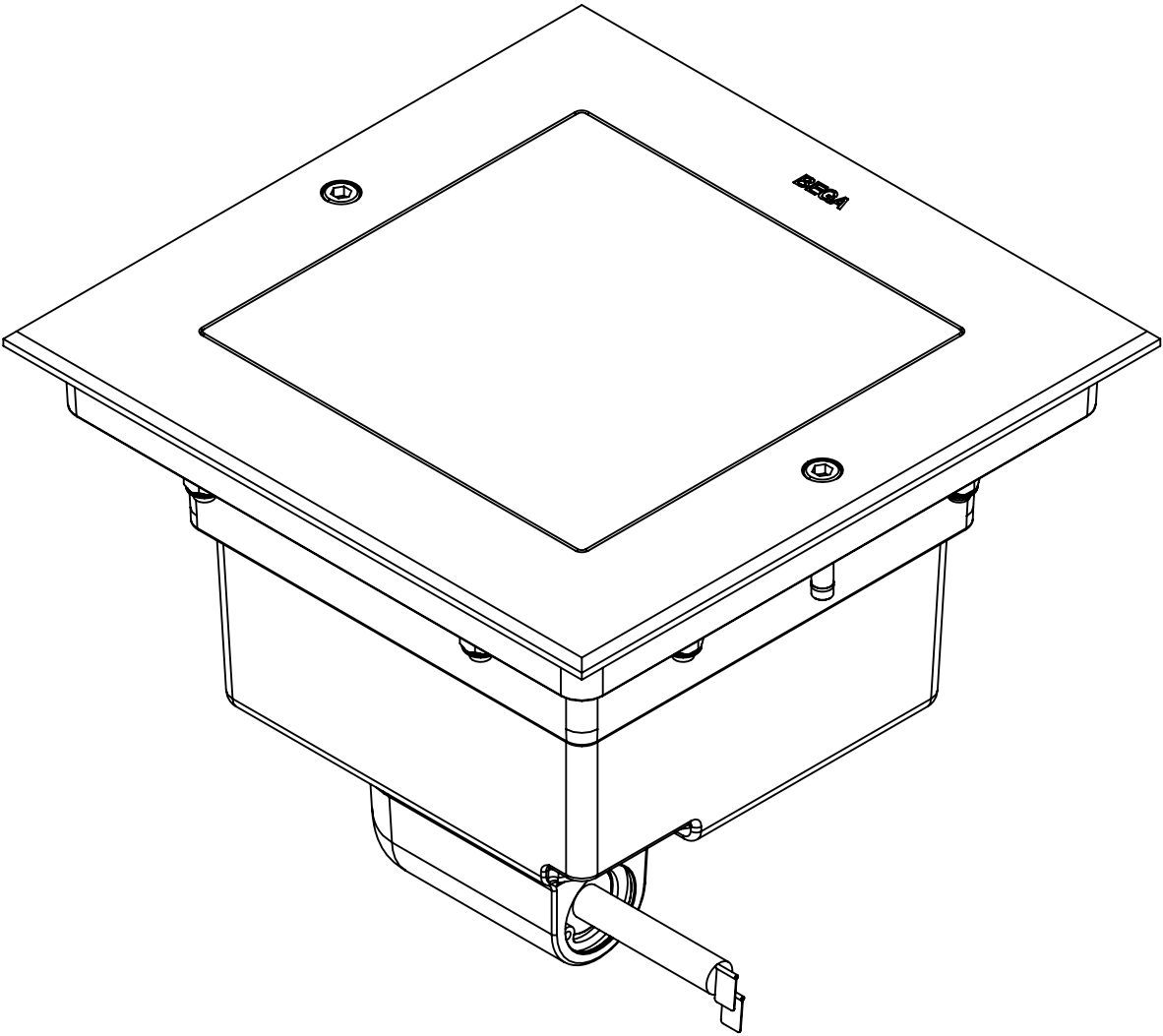


REV	CHANGED BY	DESCRIPTION	DATE



PROVIDED WITH 7.5' OF
WATER PROOF CABLE



- NOTE:
1. INCLUDES KIT #76 - WATERPROOF CONNECTOR KIT
2. INCLUDES BB84287 - INSTALLATION HOUSING

BEGA				
1000 BEGA Way, Carpinteria, California 93013			P (805) 684-0533 - www.bega-us.com	
APPROVED: _____		DATE: _____		DESCRIPTION: IN_GRADE LUMINAIRE - NARROW BEAM
TYPE: _____				
PROPRIETARY AND CONFIDENTIAL THE INFORMATION CONTAINED IN THIS DRAWING IS THE SOLE PROPERTY OF BEGA NORTH AMERICA, INC. ANY REPRODUCTION IN PART OR AS A WHOLE WITHOUT THE WRITTEN PERMISSION OF BEGA NORTH AMERICA, INC. IS PROHIBITED.		SIZE B	PART NO. 84281	REV -
NOT TO SCALE		06/02/2021	SHEET 1 OF 2	

REV	CHANGED BY	DESCRIPTION	DATE

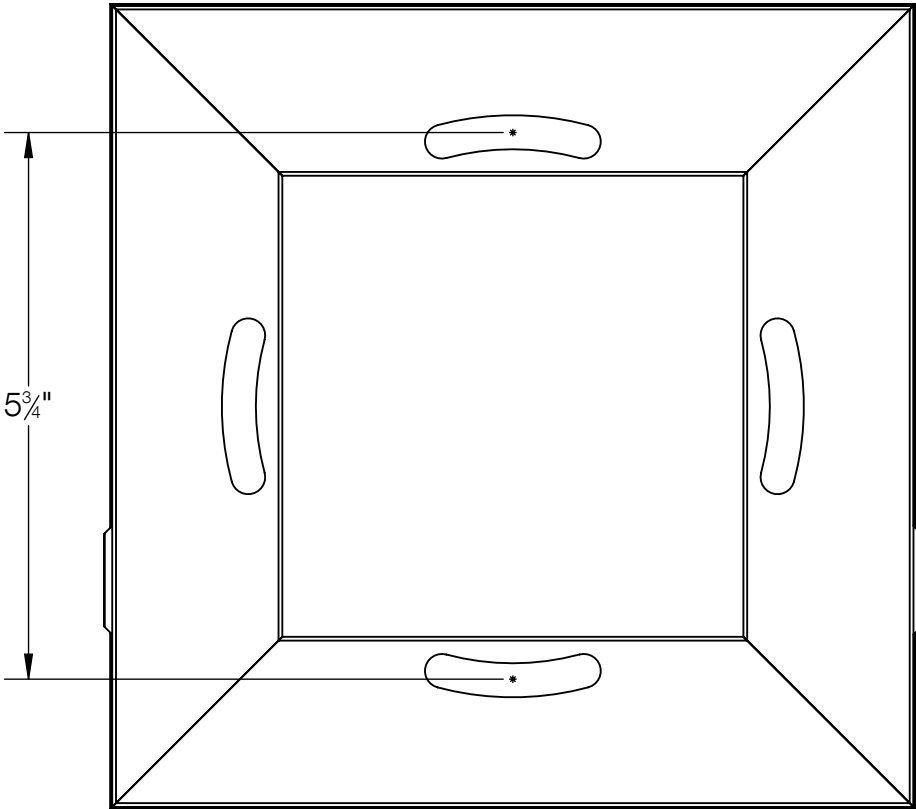
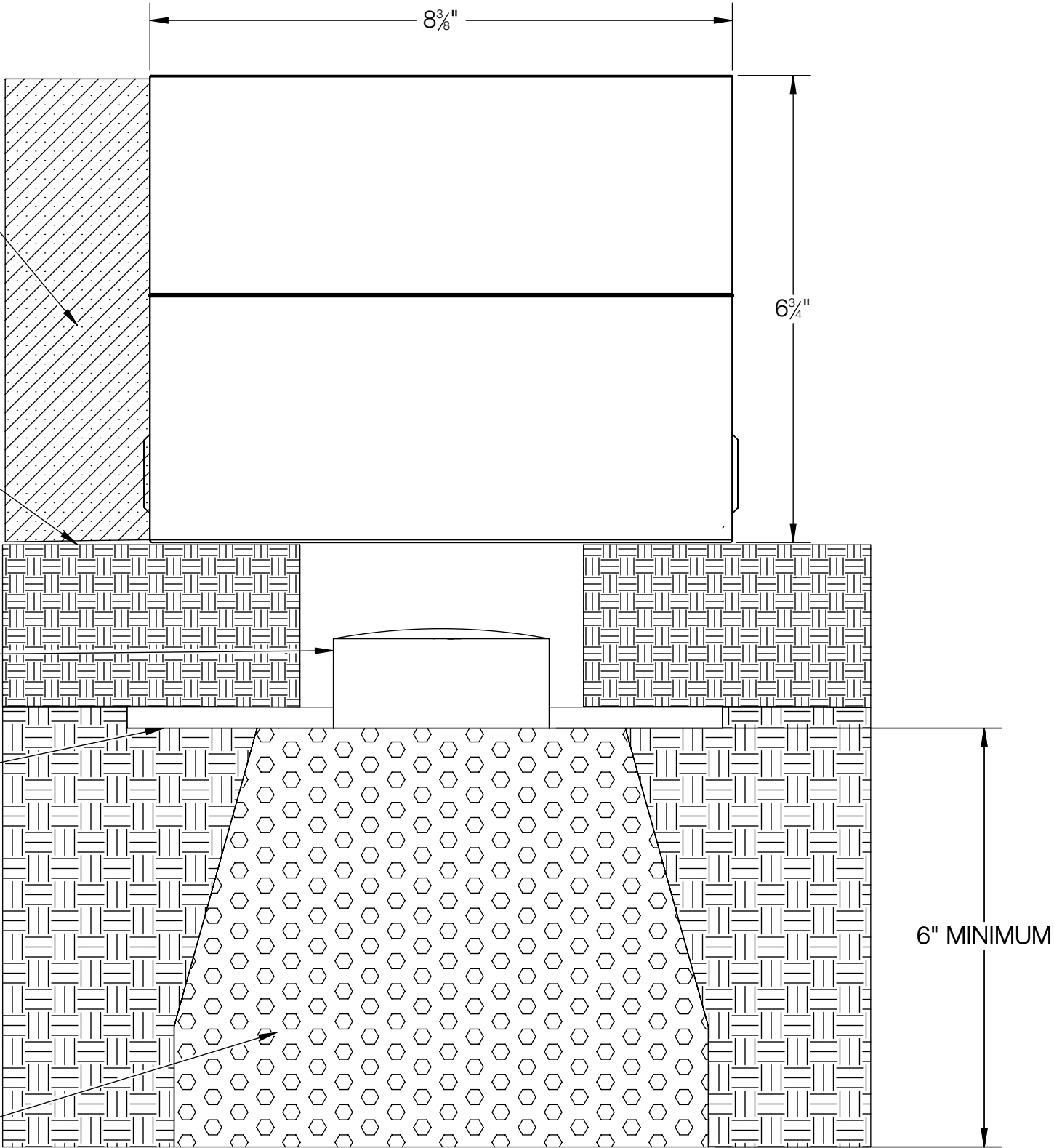
SUITABLE FOR
CONCRETE
INSTALLATION

LEVEL SURFACE
MUST BE
PROVIDED

WATERPROOF J-BOX
(BY OTHERS)
MINIMUM 4"
RECOMMENDED BELOW
FIXTURE FOR CABLE AND
JUNCTION BOX

CONDUIT

PROVIDE A MINIMUM OF
6" OF PEA GRAVEL TO
MAINTAIN PROPER
DRAINAGE
NOTE: MORE GRAVEL
MAY BE REQUIRED IN
AREAS THAT HAVE POOR
SOIL DRAINAGE AND/OR
ARE SUBJECT TO
FREEZING



BOTTOM VIEW

BEGA

1000 BEGA Way, Carpinteria, California 93013

P (805) 684-0533 - www.bega-us.com

APPROVED: _____ DATE: _____

TYPE: _____

DESCRIPTION:
INSTALLATION HOUSING

PROPRIETARY AND CONFIDENTIAL
THE INFORMATION CONTAINED IN THIS DRAWING IS THE SOLE PROPERTY
OF BEGA NORTH AMERICA, INC.
ANY REPRODUCTION IN PART OR AS A WHOLE WITHOUT THE WRITTEN
PERMISSION OF BEGA NORTH AMERICA, INC. IS PROHIBITED.

SIZE	PART NO.	REV
B	BB84287	-
NOT TO SCALE	06/02/2021	SHEET 2 OF 2