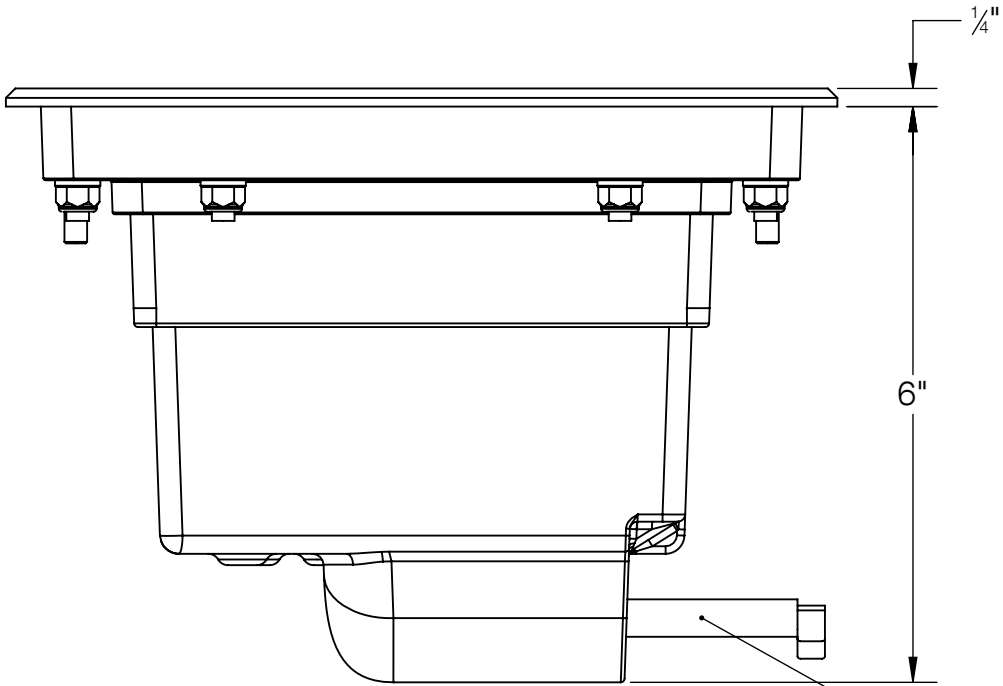
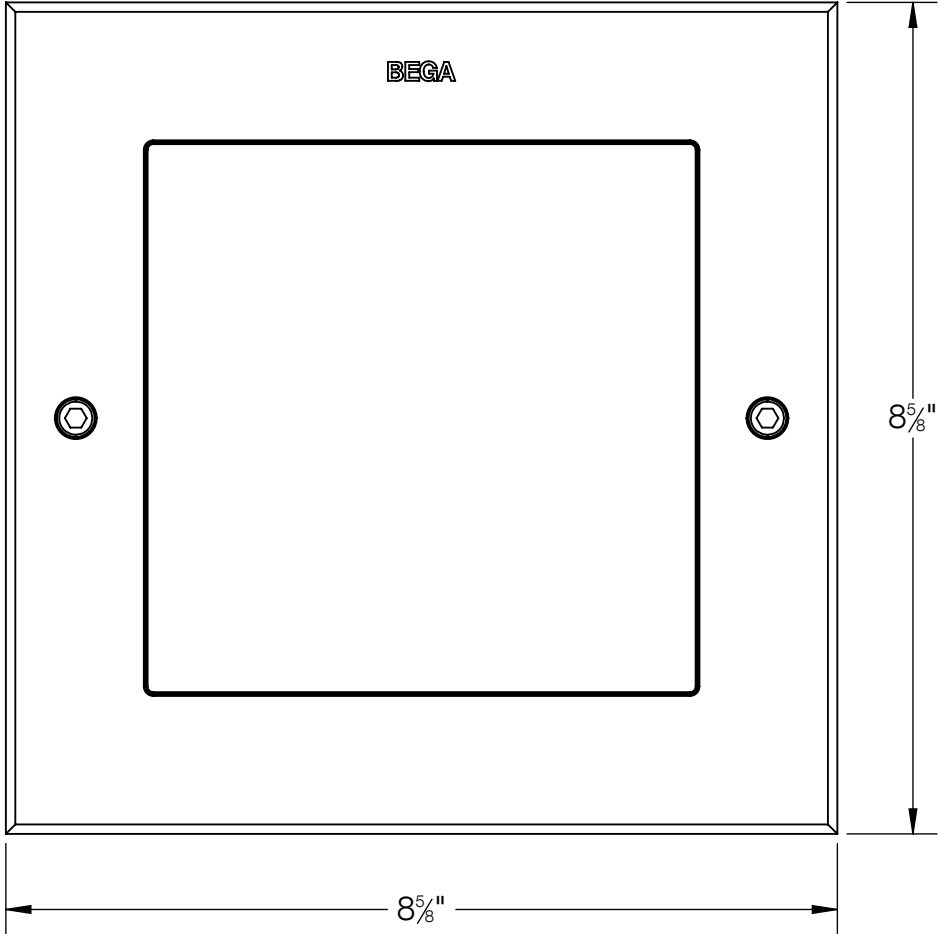
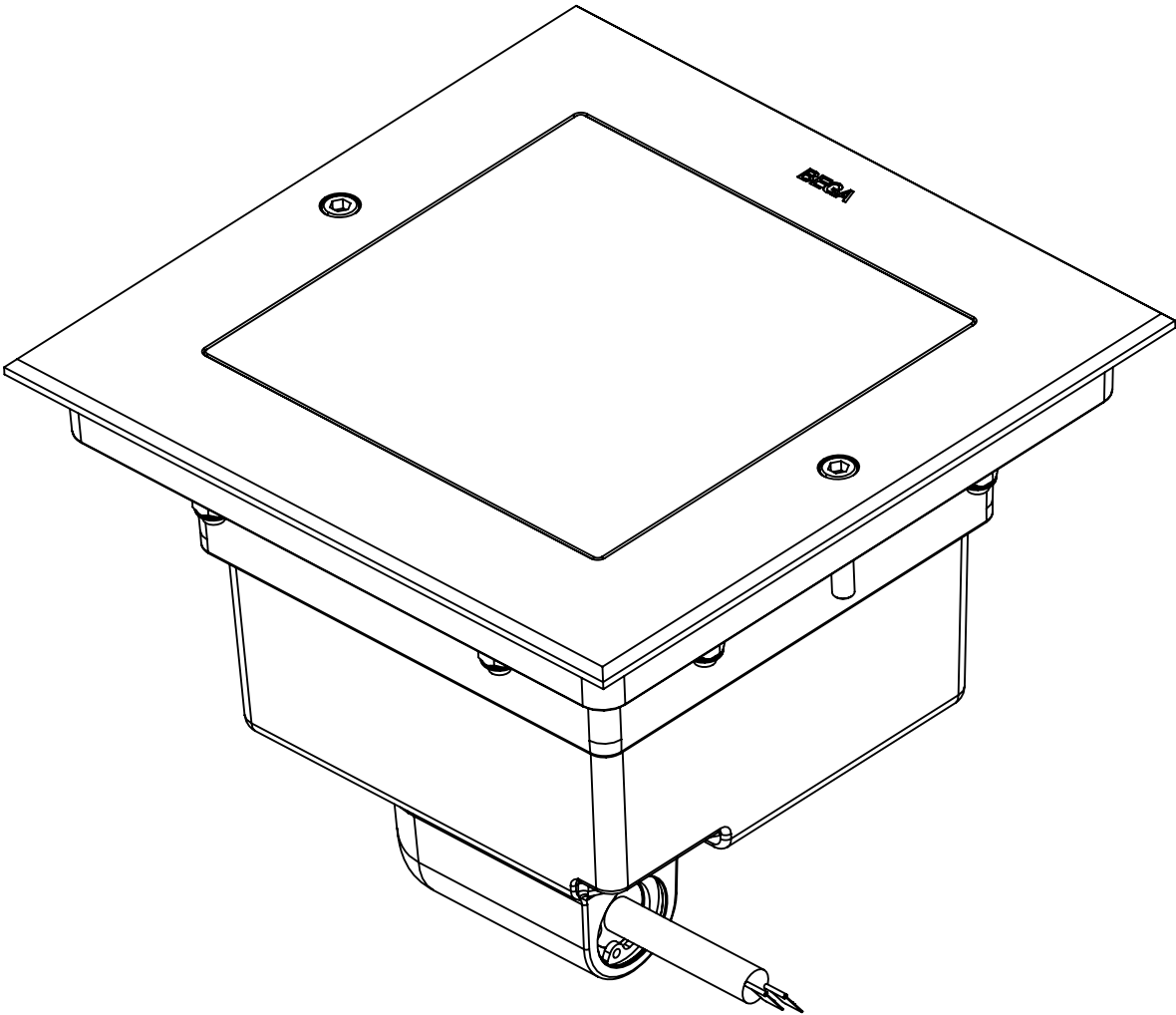


| REV | CHANGED BY | DESCRIPTION | DATE |
|-----|------------|-------------|------|
| | | | |



PROVIDED WITH 7.5' OF
WATER PROOF CABLE



- NOTE:
- 1. INCLUDES KIT #76 - WATERPROOF CONNECTOR KIT
 - 2. INCLUDES BB84287 - INSTALLATION HOUSING

| BEGA | | | |
|--|--|---|-------------------|
| 1000 BEGA Way, Carpinteria, California 93013 | | P (805) 684-0533 - www.bega-us.com | |
| APPROVED: _____ DATE: _____ | | DESCRIPTION: IN-GRADE LUMINAIRE - LOCATION LUMINAIRE | |
| TYPE: _____ | | | |
| PROPRIETARY AND CONFIDENTIAL THE INFORMATION CONTAINED IN THIS DRAWING IS THE SOLE PROPERTY OF BEGA NORTH AMERICA, INC. ANY REPRODUCTION IN PART OR AS A WHOLE WITHOUT THE WRITTEN PERMISSION OF BEGA NORTH AMERICA, INC. IS PROHIBITED. | | SIZE B | PART NO. 84287 |
| | | REV - | |
| NOT TO SCALE | | 06/02/2021 | SHEET 1 OF 2 |

| REV | CHANGED BY | DESCRIPTION | DATE |
|-----|------------|-------------|------|
| | | | |

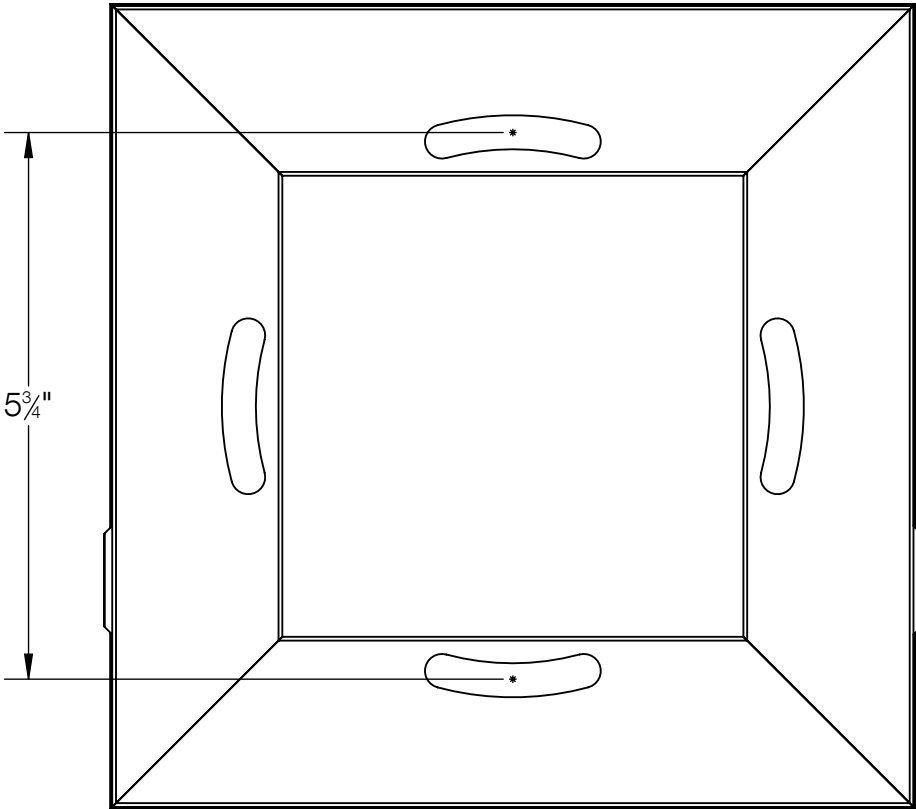
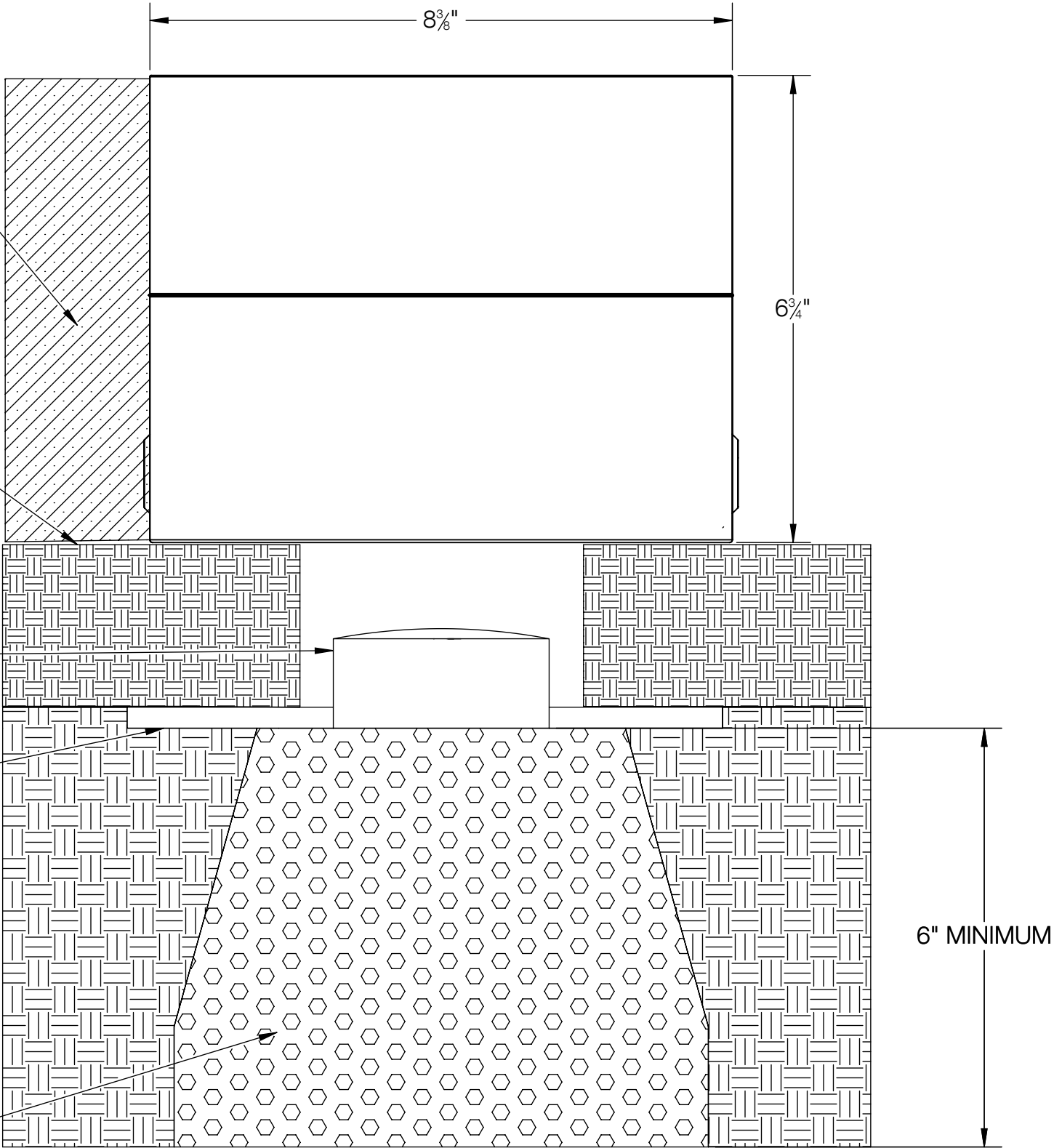
SUITABLE FOR
CONCRETE
INSTALLATION

LEVEL SURFACE
MUST BE
PROVIDED

WATERPROOF J-BOX
(BY OTHERS)
MINIMUM 4"
RECOMMENDED BELOW
FIXTURE FOR CABLE AND
JUNCTION BOX

CONDUIT

PROVIDE A MINIMUM OF
6" OF PEA GRAVEL TO
MAINTAIN PROPER
DRAINAGE
NOTE: MORE GRAVEL
MAY BE REQUIRED IN
AREAS THAT HAVE POOR
SOIL DRAINAGE AND/OR
ARE SUBJECT TO
FREEZING



BOTTOM VIEW

BEGA

1000 BEGA Way, Carpinteria, California 93013

P (805) 684-0533 - www.bega-us.com

APPROVED: _____ DATE: _____

TYPE: _____

DESCRIPTION:
INSTALLATION HOUSING

PROPRIETARY AND CONFIDENTIAL
THE INFORMATION CONTAINED IN THIS DRAWING IS THE SOLE PROPERTY
OF BEGA NORTH AMERICA, INC.
ANY REPRODUCTION IN PART OR AS A WHOLE WITHOUT THE WRITTEN
PERMISSION OF BEGA NORTH AMERICA, INC. IS PROHIBITED.

| | | |
|------------------|----------------------------|--------------|
| SIZE B | PART NO. BB84287 | REV - |
| NOT TO SCALE | 06/02/2021 | SHEET 2 OF 2 |